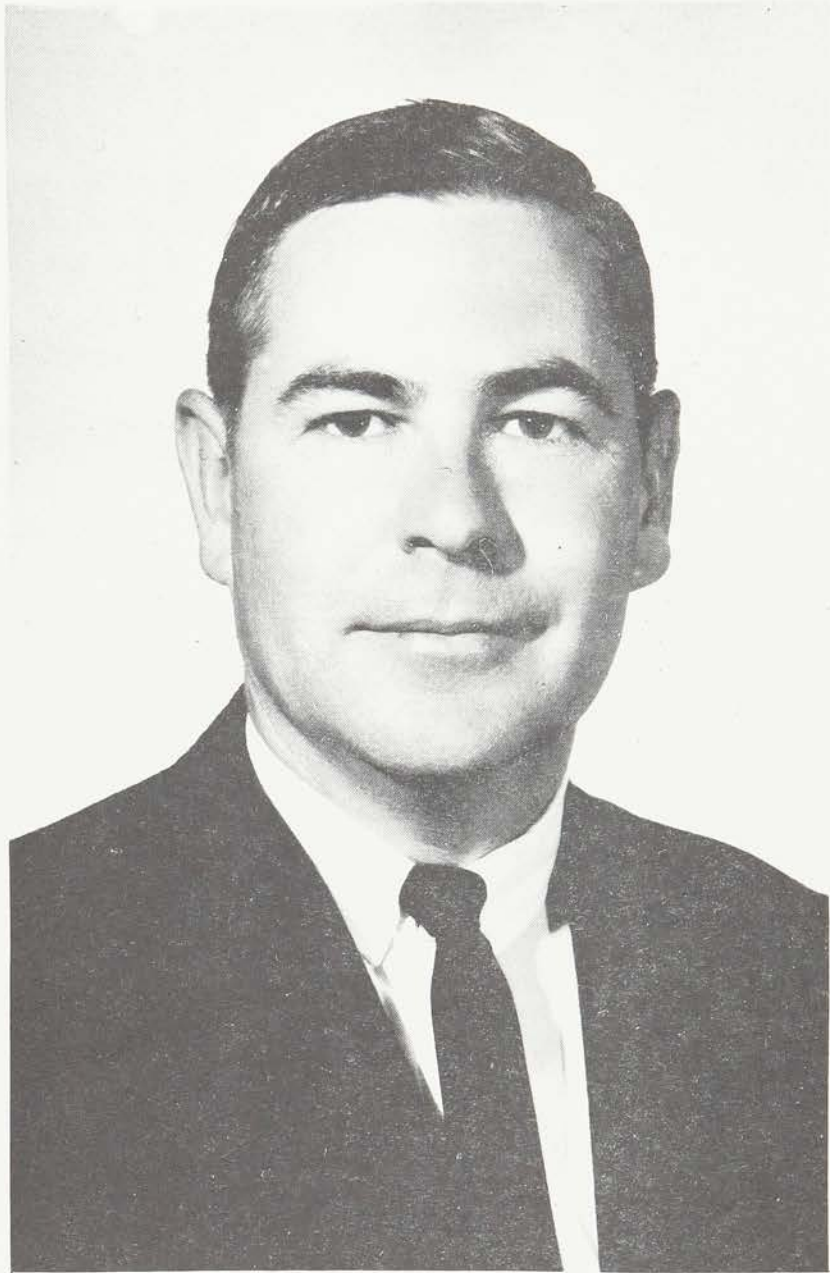


Beta Alpha Nu
of



Petitions
Delta Sigma Pi



The Brothers of Beta Alpha Nu Fraternity of Northern Arizona University respectfully dedicate this petition to W. E. Wilson, who has devoted his time, energy, and guidance to help promote and better our fraternity.

We also take this opportunity to thank the faculty members and others who have helped in our formation.

PETITION FOR A DELTA SIGMA PI CHARTER

from

BETA ALPHA NU, NORTHERN ARIZONA UNIVERSITY

We, the members of Beta Alpha Nu Fraternity at Northern Arizona University, under full understanding of the honor and responsibility which we ask you to bestow upon us, hereby petition the International Fraternity of Delta Sigma Pi to establish an undergraduate chapter on our campus.

Founded upon the desire to accept men who were willing to work diligently, sacrifice unmeasurably, and contribute unselfishly toward our ultimate goal -- a national Delta Sigma Pi charter, we have bound together a group of men of various interests and talents who have all worked assiduously in an effort to maintain the high standards of Delta Sigma Pi and to achieve our ultimate goal.

We earnestly request this affiliation and pledge ourselves to observe the regulations of the International Fraternity of Delta Sigma Pi and to uphold and further it's ideals and traditions.

For the Brothers of Beta Alpha Nu



Kenneth M. Damm
President



Northern Arizona University · FLAGSTAFF, ARIZONA

OFFICE OF THE PRESIDENT

January 16, 1967

Central Administrative Officers
Delta Sigma Pi Business Fraternity

Gentlemen:

The business students at Northern Arizona University have been in communication with the Central Office regarding their interest in petitioning for a charter since they are interested in affiliating with the national organization.

I am sure that you are quite aware that the College of Business is perhaps the fastest growing college on our campus. There are a great many very fine young men majoring in the field of business and they have brought credit to the University in different intercollegiate forums during recent years. We are extremely proud of the activity of these young men and it is only natural that I would like to recommend them for your consideration.

If additional information is desired regarding the activity of the College of Business or the activity of the colony, I will be most happy to respond. Best wishes for a successful and happy relationship between the young men in our colony chapter of Delta Sigma Pi and the Central Office.

Most sincerely,

J. Lawrence Walkup
President

JLW:gh



Northern Arizona University · FLAGSTAFF, ARIZONA

COLLEGE OF BUSINESS ADMINISTRATION

February 8, 1967

TO WHOM IT MAY CONCERN:

Please regard this letter as my enthusiastic support for National recognition for the Coloney of Beta Alpha Nu of Delta Sigma Pi.

I believe the objectivies of Beta Alpha Nu are worthy ones and know that association with National will help fulfill these objectivies.

I believe that National should sincerely consider the acceptance of the application of Beta Alpha Nu in view of the high standards they propose for members of the Northern Arizona University chapter.

I have indicated to the fraternity that I agree with their objectivies and will support them in whatever way I can.

Sincerely yours,

Art Hughes

Art Hughes, Dean

AH:jg



Northern Arizona University · FLAGSTAFF, ARIZONA

COLLEGE OF BUSINESS ADMINISTRATION

February 6, 1967

Gentlemen:

With enthusiasm I commend to you the Beta Alpha Nu Colony of Delta Sigma Pi.

Beta Alpha Nu has among its membership some of the finest young men on campus and includes some of the outstanding student leaders.

They have gained the respect and admiration of many students and the name of Delta Sigma Pi is held in high regard on campus.

It has been my pleasure to work with these young men in the capacity of their advisor.

It is through my association with these young men and being a Delta Sig myself that I recommend to you that this colony of Delta Sigma Pi be granted a national charter.

Sincerely,

C.D. Phillips,
Professor of Management



Northern Arizona University · FLAGSTAFF, ARIZONA

COLLEGE OF BUSINESS ADMINISTRATION

February 6, 1967

To Whom It May Concern:

The young men of Northern Arizona University who have founded the Beta Alpha Nu Chapter of Delta Sigma Pi, have demonstrated an initiative and knowledge which will place them on top in professional fraternity activities; indeed, in their professional activities away from college.

Their acts speak louder than their proclamations. Because of this, I wish to recommend them as an example of developing professional leadership in student-campus-community affairs.

In a short period of time, they have stimulated campus interest and encouraged professionalism through several informative lectures and constructive projects. They have demonstrated an ability to choose and develop sound leadership. They have demonstrated an ability to grow by stimulating interest and providing opportunity for student development. Very early in their existence, they have demonstrated a sense of timing and planning in campus projects which places them in contention as the leaders in fraternity activity on the Northern Arizona University Campus.

I am sure you will find the young men of Delta Sigma Pi optimistic, hard working, and realistic in their objectives, and a credit to the institution of the professional fraternity.

Sincerely,

Philip E. Bartow

Philip E. Bartow

Assistant Professor of Management

PEB:dgb



Northern Arizona University · FLAGSTAFF, ARIZONA

COLLEGE OF BUSINESS ADMINISTRATION

February 8, 1967

To Whom It May Concern:

Although my contact with the Delta Sigma Pi colony at Northern Arizona University has been limited to my role as faculty advisor, I have been quite impressed with the maturity, initiative and general seriousness of purpose of the group.

Developing a new organization within a well structured University atmosphere is not an easy task. The men of Delta Sigma Pi have achieved University recognition as an aggressive, well motivated fraternity, not only amongst the student body, but with the faculty as well. Their efforts to present public programs designed to increase public awareness of the role of business and the businessman in a free enterprise society have been very successful.

It is with no reservation that I recommend that this colony of Delta Sigma Pi be granted a National Charter.

Sincerely,

David D. Chase
Instructor of Accounting and Statistics

History of Flagstaff

The name "Flagstaff" comes from a pine tree being stripped of its branches to serve as a "flagstaff" for flying the American flag on the 100th anniversary of Independence Day, July 4, 1876. Now generally followed by U. S. Highway 66 across Northern Arizona, Flagstaff was used for many years as a wagon train route to California, and the site of the "flagstaff" was a popular camping area because of the spring which furnished abundant water. The "flagstaff" stood for many years to guide other parties along the trail.

The lumber industry had its start from an early sawmill built in 1882. This mill was established to furnish ties for the Atlantic and Pacific Railroad which was extended to Flagstaff that year. The Atlantic and Pacific subsequently became the Santa Fe's main transcontinental line through Arizona.

Flagstaff's history as a key stop on important travel routes began when it became a Wells Fargo station in 1885. Plagued by fires, Flagstaff was destroyed in 1884 and again in 1886. By 1891, Flagstaff was made county seat of the newly formed Coconino County, second largest county in area in the United States, but it was not until May 26, 1894 that the city was incorporated. That same year, the world famous Lowell Observatory was located on Mars Hill inside the west city limits. In 1908 the Coconino National Forest was created with headquarters at Flagstaff, and the first forest experimental station was established at Fort Valley. The Museum of Northern Arizona was founded by Dr. Harold S. Colton in 1928. The same year saw the start of the annual Southwest All Indian Pow-Wow. Organized snow sports began in 1940 at the Arizona Snow Bowl on the slopes of the San Francisco Peaks.

The Coconino Indians, ancestors to today's Havasupai, were early inhabitants of the Plateau; the Hopi still consider the peaks as home of their legendary spirits.

Today Flagstaff is Northern Arizona's largest city and is at the junction of major transcontinental highways 66 and 89.

Flagstaff is a beautiful city of approximately 26,000 people, located at the foot of the San Francisco Peaks, the highest of which is 12,680 feet. The city is at 7,000 feet elevation, in the midst of stately pines and quaking aspens, and is applicably named "The City of Seven Wonders," for within its immediate environs are located the famed Grand Canyon, Wupatki, Sunset Crater, Walnut Canyon, Oak Creek Canyon, the towering San Francisco Peaks, and Meteor Crater.

Flagstaff is one of the unique cities in America whose interests reach from the far horizons of tomorrow to the prehistoric past. On Mars Hill is located Lowell Observatory, one of the foremost astronomical observatories in the country where Pluto was discovered in 1930, and where the newly built U. S. Air Force's Aerial Chart Information Center (A.C.I.C.) has Lunar Mapping activities. Four other observatories are located in the Flagstaff area -- one of them being the U. S. Naval Observatory with a 61 inch astrometric telescope. Lunar Topographic Research is conducted by the Astrogeological Branch of the U. S. Geological Survey, with field work both at Sunset and Meteor Crater.

The city is a hub of a travel area encompassing seven major parks and monuments. Grand Canyon is the 218-mile long chasm of the Colorado River. Sunset Crater, north of town, is a volcanic cone with lava flows so closely resembling the moon's surface that it is used for NASA'S lunar exercises. Nearby, too, are four major Indian ruins: Wupatki, a cluster of 800 early homesites near Sunset Crater; the 110-room hilltop pueblo of Tuzigoot and ancient irrigated valley of Montezuma Castle and Well, south of town; and Walnut Canyon's prehistoric dwellings just east of the city.

Flagstaff's climate is wonderful with four defined seasons in the year.

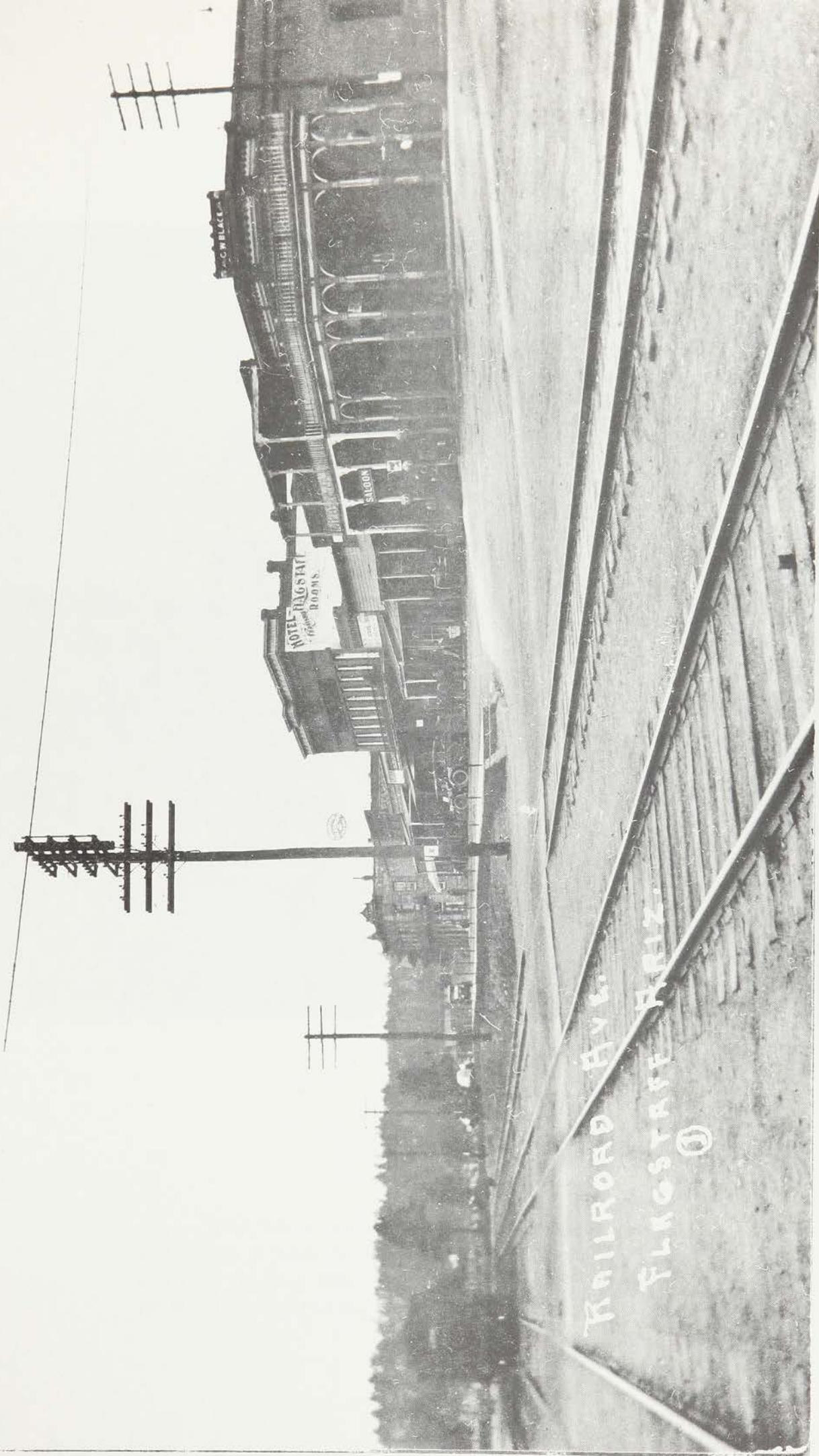
Recreational facilities include a City Park which has a small ski slope and rope tow ideal for beginners and intermediates plus an outdoor skating rink, a County Park, several lakes and picnic areas, and two golf courses which are just a few minutes away. Fishing is available the year round at one of our lakes or beautiful Oak Creek Canyon, and hunting in season for quail, dove, geese, turkey, deer, antelope, elk, and bear make Flagstaff an ideal place to live.

For the outdoor sports lover we have many varied activities including the Arizona Snow Bowl with complete facilities of a Riblet Double Chair Lift, a Poma, and Platter Pull for the beginner. During the summer months the chair lift operates, making a ride to the top of Mt. Agassiz, 12,340 feet high, long remembered for the far reaching, magnificent view to the Grand Canyon and into California and Mexico.



San Francisco Peaks

Nestled at the foot of the inspiring San Francisco Peaks, the campus meets the ideals of all lovers of the out-of-doors. They are an enduring symbol to all who dwell within the sphere of their influence.



HOTEL FLAGSTAFF
ROOMS

SALOON

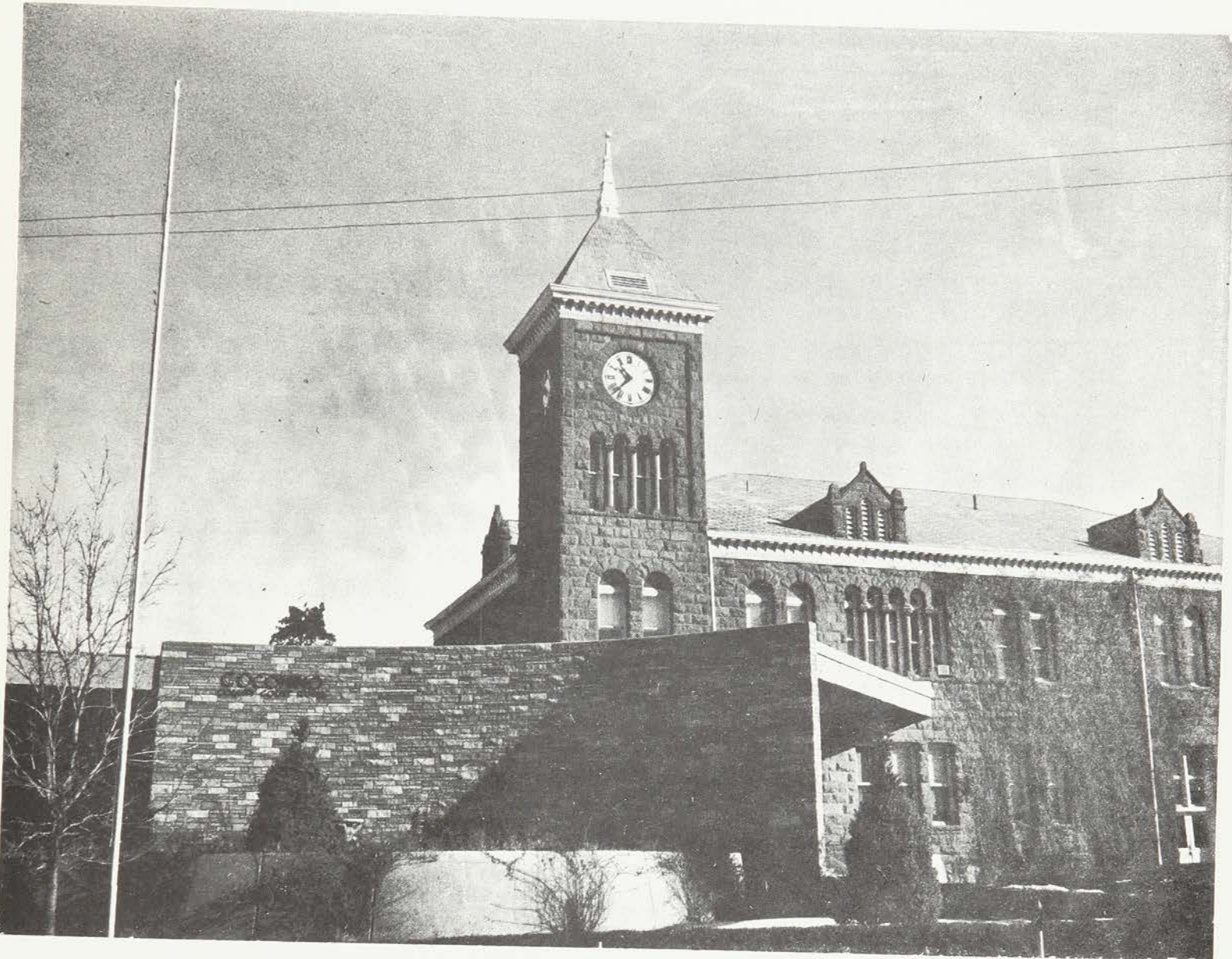
C. W. BLAKE

RAILROAD AVE.
FLAGSTAFF ARIZ.

①



The train station still stands today as it did when it was first constructed in the early 1880's. It is a well known sight to travelers to Northern Arizona.



The Coconino County Court House blends the old and the new as do many of the buildings in Flagstaff. The original building was constructed in 1899 with new additions in 1925, 1955, and 1963.

History of Northern Arizona University

The first concrete evidence that Flagstaff was to receive some type of institution came in 1893. The Seventh Territorial Legislature authorized the creation of a reform school, but this idea was dropped. In 1893 plans were made to organize this territorial normal school at Flagstaff, Arizona, but little came of it until the townspeople took positive action in 1899. The first school term began September 11, 1899, with an enrollment of 23 students. The first graduation class was in 1901. The State Legislature, on May 7, 1925, changed the status of the school from a normal school to a four-year degree conferring college, granting the Bachelor of Education. In 1929 the degree was changed in name to the Bachelor of Arts in Education. The name of the school was changed to Northern Arizona State Teachers College in 1925 and the Arizona State Teachers College at Flagstaff in 1928. In 1937 the State Legislature granted the College the right to establish and conduct courses carrying graduate credit which would permit the conferring the Degree of Master of Arts in Education upon satisfactory completion of such courses.

In March, 1945, the name again was changed to Arizona State College at Flagstaff, and the Legislature placed all three state institutions of higher learning under the control of one Board of Regents which is now known as the Board of Regents of Universities and State Colleges of Arizona. In a general meeting on November 28, 1964, the Board of Regents unanimously approved the changing of Arizona State College to University status which was effective on May 1, 1966. At that time it was decided that the University would be known as Northern Arizona University. The University academic area involves the establishment of four colleges and two schools; College of Arts and Sciences, College of Business Administration, College of Creative

Arts, College of Education, School of Forestry, and School of Applied Science and Technology.

The institution has grown and grown from its start as a one-building normal school. Now the school has a 270-acre campus in a very beautiful location and it is one of the fastest growing institutions of higher learning in Arizona. During the period from 1955 to 1964 the enrollment increased more than 408 per cent. At the present time there are approximately 6,000 students enrolled at the University. By 1975 the Administration expects an enrollment of around 15,000 students. Future plans are to locate the College of Business Administration in the second center (North Valley Center) of a three-campus complex which will make up the total University campus.

The institution is a member of The North Central Association of Colleges and Secondary Schools, the American Association for Teacher Education, the Association of State Colleges and Universities, and the American Council of Education. Northern Arizona University is also approved by the American Association of University Women. This means that all women graduates holding a baccalaureate degree from this institution are eligible for membership in the AAUW.



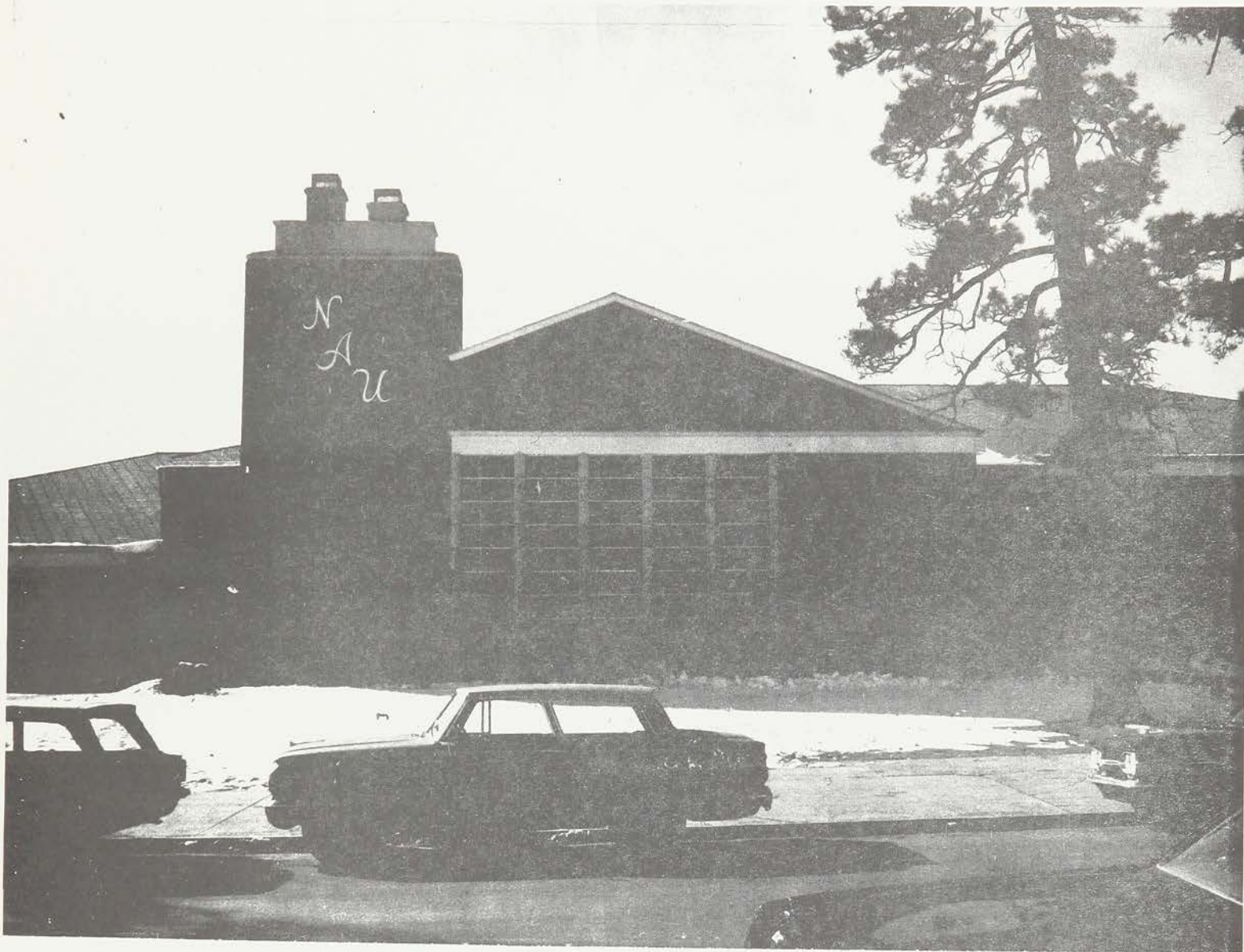
THE IMAGE OF ARIZONA STATE COLLEGE

TO BECOME EDUCATED IS TO BECOME MORE HUMAN.

RECOGNIZING THIS PRINCIPLE, WE OF THE ARIZONA STATE COLLEGE FACULTY DEDICATE OURSELVES TO MAINTAIN THE HIGHEST STANDARD OF PROFESSIONAL EFFICIENCY IN A CAMPUS ATMOSPHERE OF SCHOLARSHIP AND FRIENDLINESS. FURTHERMORE, WE FEEL THAT WITHIN AND WITHOUT THE CLASSROOM, THE LINE OF COMMUNICATION BETWEEN THE STUDENT AND THE FACULTY MUST BE KEPT OPEN AND THE INDIVIDUALITY OF THE STUDENT MUST BE PRESERVED.

1961

This plaque stands as a symbol of the small school concept at N A.U., an open door relationship between the student and the instructor.



Student Union Building

The N.A.U. Student Union Building is replaced now by a new student activity center.



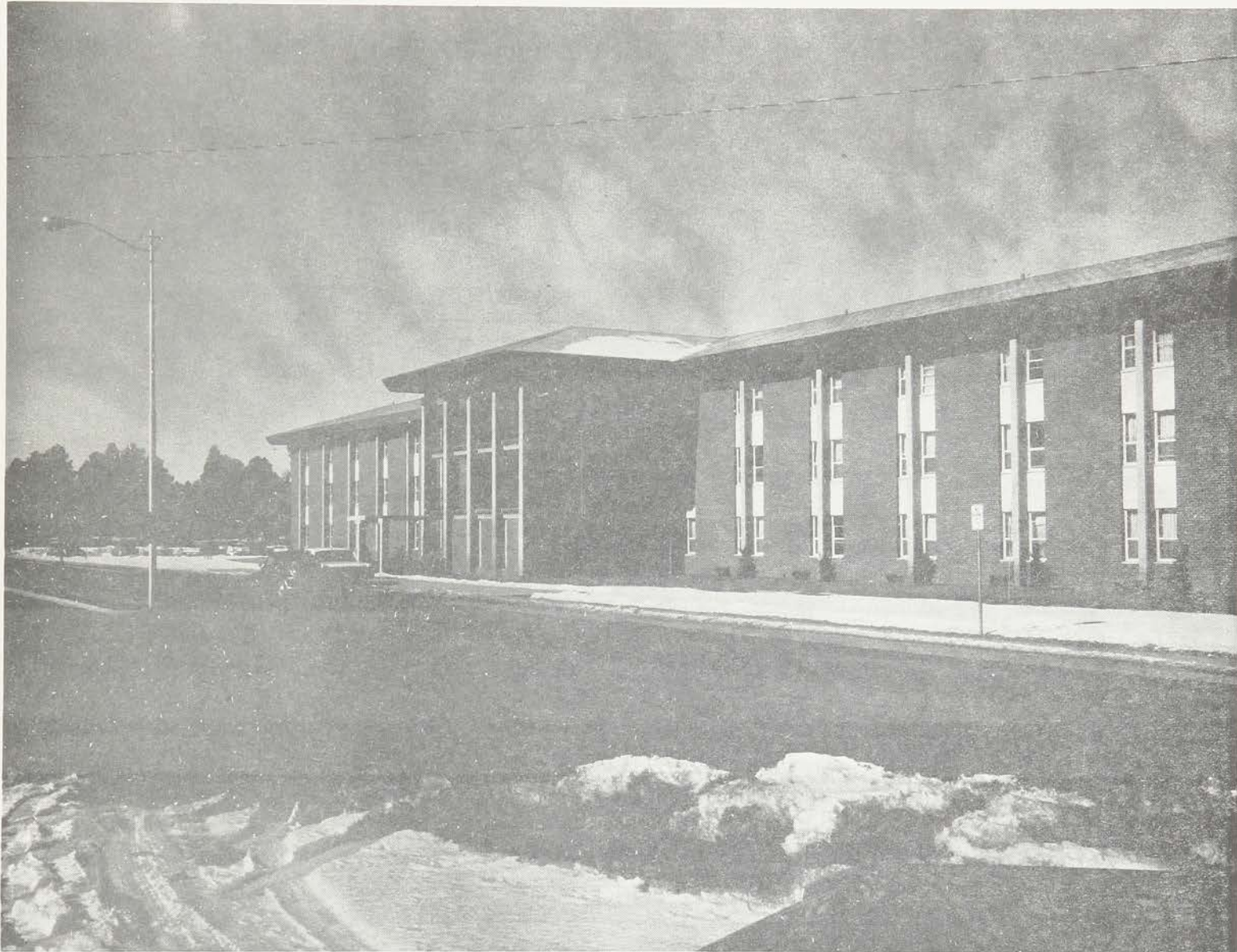
N.A.U. Library

Our new \$1,000,000 library. It is the largest academic building on campus. The library has been designed to meet the needs of a growing institution and to shelve over 200,000 volumes.



High Rise Dormitory

This is the newest of the many men's dorms. It was completed during the fall of 1966. It stands nine stories high and houses 618 students and is serviced by elevators.



Wilson Dormitory

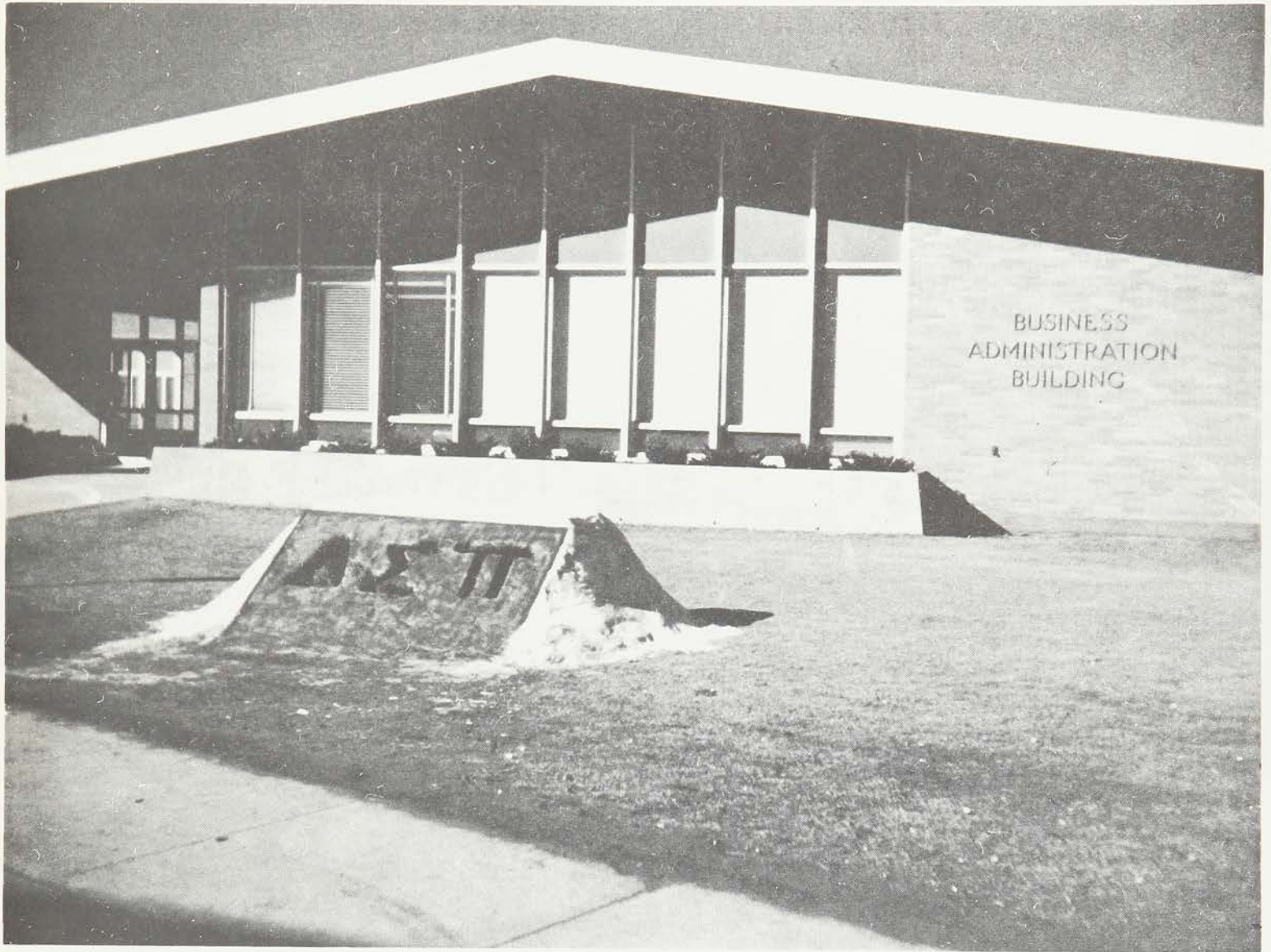
A typical example of one of many women's dorms on campus. Completed in 1965, this dorm has a capacity to hold 300 students, most of whom are freshmen.

The College of Business Administration

During the early history of the institution, courses in Business Education and/or Commerce (both names were used in the early catalogues) were offered. In 1935, courses in the areas of accounting, economics, marketing, management and finance, and secretarial science were being offered. In 1959, the Division of Business Administration was established and was authorized to offer work leading to the Bachelor of Science or the Bachelor of Arts degree with a major in Business Administration. Areas of emphasis were offered in accounting, economics, general business, marketing, finance, and secretarial studies. A Bachelor of Science in Education degree was also offered for those preparing to teach in high school. In addition to the degree programs, one year and two year terminal programs in secretarial studies were offered. In 1963, the name was changed to the School of Business Administration and major programs were offered leading to the Bachelor of Science degree in accounting, economics, finance, general management, production management, marketing, personnel and industrial relations, and secretarial studies. The Bachelor of Science in Education and the Bachelor of Arts in Economics, and the one year and two year terminal programs in secretarial studies continue to constitute the offerings of the College of Business Administration. One of the most important minors offered is the two year data processing program. Graduates are prepared to find positions as punch-card equipment operators, computer console, computer programmer and ultimately systems supervisors.

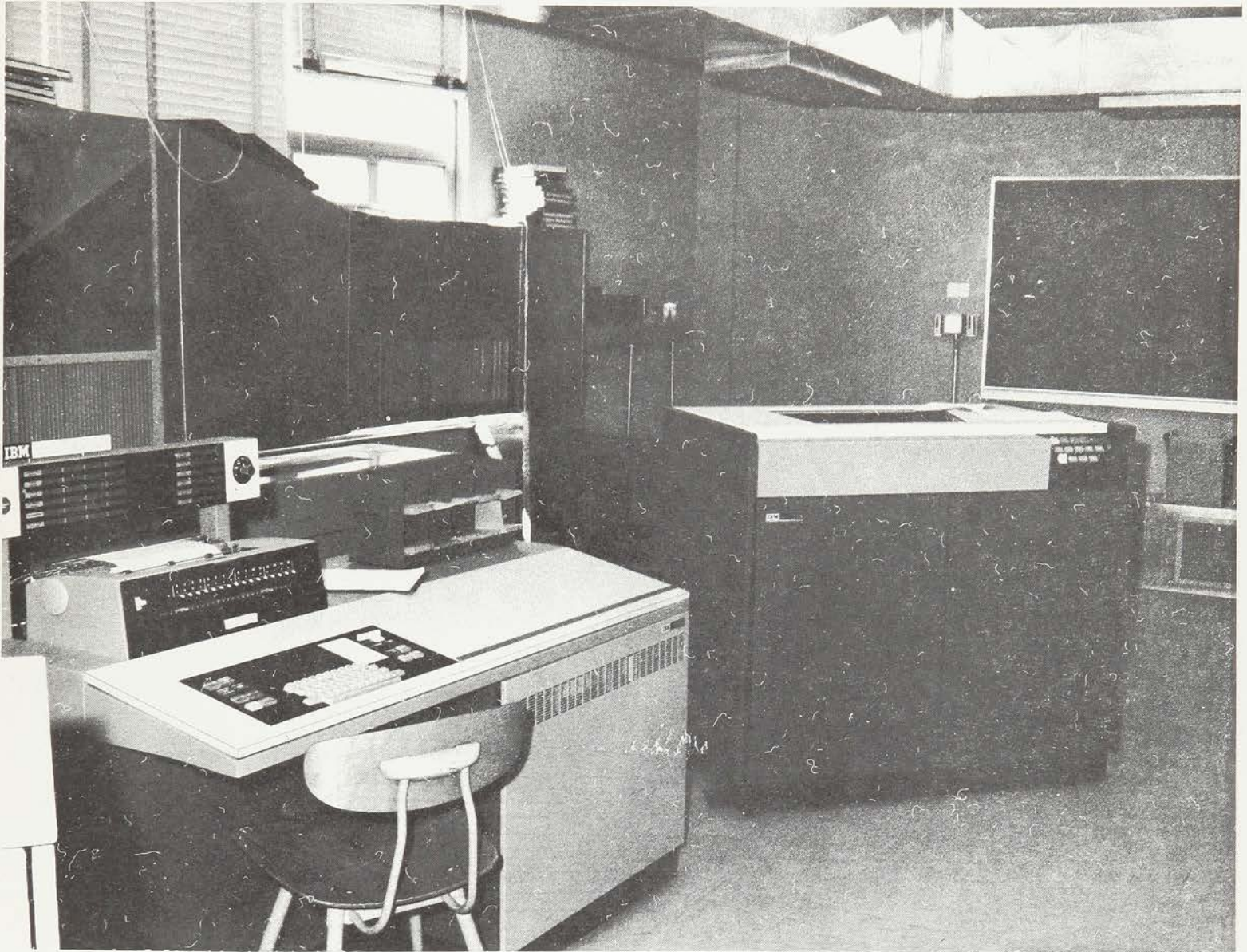
The present College of Business building was constructed in the fall of 1962. Plans now are for the College of Business to be located in the second largest campus in a three cluster campus making up the whole of the University campus. The new business college is planned to be in operation by 1970. The present enrollment of the

Business major students is approximately 1100 with an expected 1300 for the fall semester of 1967. The present faculty total is 28, 7 of these having their Doctorates. The fall semester, 1967, will see a total of 33 instructors, which will include an increase of 5 instructors having their Doctorates.



Business Administration Building

This building was completed in 1962. It handles over one thousand students a year and will soon have a new addition to take on the increasing load of new students.



Computer Room - College of Business
Administration

Advanced managerial analytical tools which are located in the business administration building. This equipment helps the student to better understand the problems management will face in the future.

History of Beta Alpha Nu

Beta Alpha Nu was formed during the first part of the 1966 fall semester at Northern Arizona University under the guidance of Bill Wilson, Arizona District Director of Delta Sigma Pi, and Charles Phillips, an alumni of Delta Sigma Pi. During the semester the fraternity has worked, grown and improved to the point where it is well known on campus and in the community. The fraternity has sponsored educational programs such as lectures and tours. During the 1966 fall semester the fraternity had three speakers who talked on areas of business. Of these, two were open programs for the entire university. A tour of the Arizona Daily Sun was also a part of their informative program for the semester. Because of this work they have been appointed to head the recruiting of nationally known speakers for the College of Business. The College of Business has also approached them with other problems, such as providing a relay between student and faculty, posters, and evaluation sheets.

On-campus activities include having the only 1967 car in the 1966 Homecoming Parade, the lead car and only Model A in the Annual Pep Rally, and a sculpture in the Annual Snow Carnival. They participated in the lighting of the luminaries at Christmas which is a long-standing tradition at Northern Arizona University.

They have worked with the Chamber of Commerce in testing local business to improve their efficiency. They collected and donated food to the Salvation Army for local needy families. Besides these, many more worth-while local projects are planned and they will soon be in effect.

Sports include a bowling team that is at the present time in 1st place in the local leagues and holds all the trophies given for individual performance in seven categories. The Brothers have also participated in recreational outings to improve

relations and contacts between themselves. In the future there will be extensive participation in intramural sports.

Along with dues Beta Alpha Nu has sponsored money raising projects such as the 1st dance at the beginning of the 1967 spring semester. The treasury has increased at a constant rate since their formation, with great anticipation for the future.

Beta Alpha Nu has worked to maintain the high standards set by Delta Sigma Pi since it's most cherished goal is to be incorporated into this National Professional Fraternity. They will continue their efforts for as long as it takes to achieve this desired goal.

EXECUTIVE COMMITTEE

Kenneth M. Damm, President
 Ralph L. Hathaway, Sr. Vice President
 Stephen G. Krahe, Vice-President
 James N. Gully, Secretary
 Larry D. Vernier, Treasurer
 John M. Bergamo, Historian
 Bill Kimball, Chancellor

MEMBERS

	<u>Major</u>	<u>Average</u>	<u>Address</u>
Randy Uchida	Marketing	2.3	Los Angeles, Calif.
David Thornton	Marketing	2.4	Phoenix, Arizona
Gary Dodson	Finance	3.0	Gladewater, Tex.
Bob McCampbell	Management	2.4	Santa Clara, Calif.
John Zulfer	Management	2.2	Glendale, Ariz.
Terry Way	Accounting	2.7	Flagstaff, Ariz.
Craig Bennett	Management	2.2	Garden Grove, Calif.
Craig Larkey	Finance	3.0	Flagstaff, Ariz.
Jay Messick	Marketing	2.3	San Francisco, Calif.
Edward Scott	Management	2.3	Los Angeles, Calif.
Darrell McClaughry	Management	2.7	Fresno, Calif.
Larry Clifton	Accounting	2.7	Phoenix, Ariz.
Ellis Cohen	Marketing	2.6	Chicago, Ill.
Dick Faux	Management	2.2	Phoenix, Ariz.
Steven Hering	Management	2.8	Lakeside, Calif.
Michael Holmes	Management	2.7	Marigopa, Calif.
Robert McCampbell	Accounting	2.9	Phoenix, Ariz.
Jeff Paulsrud	Marketing	2.7	Redondo Beach, Calif.
Ruben Moreno	Marketing	2.5	Morenci, Ariz.
Larry Potter	Management	1.8	Phoenix, Ariz.
Kenneth Damm	Management	2.4	San Diego, Calif.
Ralph L. Hathaway	Marketing	2.6	Norfolk, Va.
Stephen Krahe	Management	2.6	New York, New York
James Gully	Accounting	2.6	Tucson, Ariz.
Larry Vernier	Marketing	2.5	Detroit, Mich.
John Bergamo	Management	2.5	Morenci, Ariz.
Bill Kimball	Marketing	2.1	Tucson, Ariz.