

A PETITION TO
THE
INTERNATIONAL FRATERNITY OF
DELTA SIGMA PI

BY
BETA ALPHA PI
OF
C. W. POST COLLEGE
OF
LONG ISLAND UNIVERSITY

THE STATE OF TEXAS, ss. I, _____, Clerk of the Court of Criminal Appeals, do hereby certify that the within and foregoing is a true and correct copy of the original as the same appears on the records of the Court of Criminal Appeals.

Witness my hand and the seal of the Court of Criminal Appeals at Austin, Texas, this _____ day of _____, 19____.

Petition

In the County of _____, State of Texas, I, _____, do hereby certify that the within and foregoing is a true and correct copy of the original as the same appears on the records of the Court of Criminal Appeals.

To The Grand Council of The International
Fraternity of Delta Sigma Pi

Gentlemen:

We, the undersigned Brothers of Beta Alpha Pi Fraternity, hereby earnestly petition for a charter to establish a chapter of the International Fraternity of Delta Sigma Pi on the campus of C.W. Post College of Long Island University, Greenwale, Long Island, New York.

Beta Alpha Pi was formed exclusively for the purpose of affiliation with Delta Sigma Pi Fraternity. The present aims, purposes, and requirements reflected in our Constitution and By-Laws were patterned after and are commensurate with the same high ideals of Delta Sigma Pi.

In pursuit of this affiliation, the Brothers of Beta Alpha Pi Fraternity pledge to uphold the rules and regulations as set forth in the Constitution and By-Laws of the International Fraternity of Delta Sigma Pi and further to carry out its traditions and programs.

Witness our signatures:

Theodore J. Seiter
President

Ralph Ollo III
Srd Vice-President

Barry Lesser
Secretary

L. Thomas Rosa
Historian

Stephen P. Seiter
Petition Chairman

Arthur Rossman
Vice-President

Edward G. Kara
Treasurer

John Fleming
Chancellor

Louis Hallma
Advisor

~~Joseph Attwood~~
Larry Bauman

Thomas Bowes

~~Frederic R. Greenwood~~

Roy a. Harman

Craig Hubmeier

Fred Kaufman

Charles Kruger

Jon A. Lovelace

Jeffrey Weiner

Donald Lowe

Kenneth Malmstrom

Jerry Marcus

Louis J. Powell

Peter Robertson

Jeffrey M. Rose

Jeff Schwarz

Gene G. Spitzer

Richard Watkins

Greenvale, New York

Greenvale calls itself "The Key to the Gold Coast". Up until the end of World War II, it was a very small-time cross-roads community. Now, it has a population of 1500.

Greenvale was once called Bull's Head, and then Roslyn, before it became Greenvale. The Beers Map of 1873 shows a Greenvale Post Office at the present junction of Glen Head and Cedar Swamp Roads, approximately a mile north of today's Greenvale. Where Greenvale ought to be, the map shows "Weeks Depot" on the Long Island Rail Road.

Another map, dating from 1897, labels Greenvale where it is today, and gives the name of some early residents - Weeks, Willis, Willets, P. & M. Reardon, P. Fleming, D. Murphy, W. Seaman, W. Titus, P. Breen, and T. Travers.

Some of these names go back to the 1600's, and it was their descendants, probably farmers, who made up the farming crossroads of Greenvale in the late 1890's. The final years of the 19th century brought in something that upset the pattern of centuries, the wealthy estate owners who purchased farms and combined them into lavish country residences. The Phipps, Clark, Guest, Frich and Markay families were among these newcomers. With a few exceptions, the pioneer farm families sold out and moved away. Clarence Markay's estate was the most lavish of the lot, employing over 100 people and covering a square mile in what is now East Hills, just south of Greenvale.

As each of the estates was developed in the early 1900's a small army of Italian and Polish workmen arrived to build and maintain them. These were the people who settled in Greenvale and transformed it from a farming community to a modest hamlet - the Cangeros, Marrones, De Leos, O'Briskies, Walczaks, Sienkiewicz, Ladyzinskis, and others. Their descendants still live there.

Turning back to the days of the Bull's Head Hotel and tavern, one runs into all kinds of contradictions. On hearsay evidence, it seems to have dated from the years when Long Island was a cattle-raising region, which antedates the Civil War. Early cattle-traders are supposed to have stopped there overnight en route to the New York City markets, to do their trading, drinking and socializing. By all accounts which are admittedly thin, they were a rough tough crowd who whooped it up. Gun play was not uncommon.

One historian says that Huer's Hotel had a bullhead sign in front, and so was called the Bull's Head Hotel - a label that soon covered the crossroads settlement. The hotel was situated on the northeast corner of today's Glen Cove Road and Northern Blvd., where a Mobil gas station now is.

Mrs. Charles W. Hechler, a local historian whose husband was the superintendent of the Clarence Mackay estate believes that "Bull's Head" was derived from the New York City market where Long Island farmers took their produce. One or two other sources agree with that version.

Adam Heiss is listed as one of the earlier owners of the Bull's Head Hotel. John Radigan, an amateur historian on early Roslyn, said that the Greenvale of the 1890's extended from Chestnut Street, a block north of Northern Blvd., to Simonson Road; all south of that was designated as North Roslyn.

In the last half of the 19th century, a plank toll road operated by the Flushing and North Hempstead Turnpike Company followed somewhat the same route as Northern Blvd. There were toll gates at Roslyn and at the west end of Greenvale, with a toll-collector living in a small house at each gate. One of these toll houses is said to be the present office of Roslyn Cemetery on Northern Blvd. The plank road existed from 1859 to 1891, when the county took it over.

Mr. Radigan and some of the surviving early residents of Greenvale say that Bull's Head was an eastern Dodge City in the early 1900's. Plenty of fights and some shootings, even though hotel patrons were requested to check their shooting

irons before bellying up to the bar.

There is some flimsy evidence to support the notion that Bull's Head may have had as many as three hotels at one time, probably at the turn of the century. One of them burned about 1920, and several Greenvale youngsters now middle-aged, say that they can recall grubbing in the ruins for loose coins. At any rate, all the hotels closed down decades ago, and Greenvale became a reasonably peaceful community. The Underbuilt Cup racers roared along Greenvale's main streets in the early 1900's amid great excitement.

The Greenvalers are doing well today, and expect to do better tomorrow. But they don't mind admitting that they miss some of the action and uproar of the old days.



GREENVALE CHAMBER OF COMMERCE

HEADQUARTERS: GREENVALE COLONIAL HOUSE

55 NORTHERN BOULEVARD — ROOM 101

GREENVALE, L. I., N. Y. 11548



July 13th, 1965

Grand Council Delta Sigmi Pi
330 Campus Avenue
Oxford, Ohio

Re: Beta Alpha Pi Fraternity
C. W. Post College
Greenvale, L. I., New York

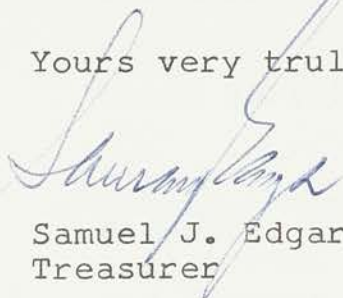
Gentlemen:

The above named on-campus fraternity is recognized by us to be the only business fraternity at C. W. Post College in Greenvale, L. I., New York.

Our Chamber is particularly interested in seeing this fraternity be associated with the national chapter. A great deal of experience and good will can be gained by this chapter with the businesses located within the college area, as well as from other organizations. Greenvale is the town closest to the college and considered the college town.

I sincerely hope this recommendation will assist in whatever way possible to associate this chapter with your national fraternity.

Yours very truly,



Samuel J. Edgar
Treasurer

SJE/ad

The
FIRST
NATIONAL BANK
OF GLEN HEAD

GREENVALE, N. Y.

TELEPHONE
MAYFAIR 1-8811

SAMUEL J. EDGAR
ASSISTANT VICE PRESIDENT AND MANAGER

June 23, 1965

Grand Council Delta Sigma Pi
330 Campus Avenue
Oxford, Ohio

Re: Beta Alpha Pi Fraternity
C. W. Post College
Greenvale, L.I., New York

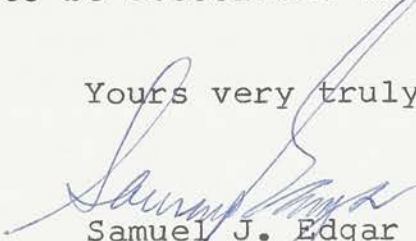
Gentlemen:

The above named on-campus fraternity established an account with this bank in March of this year.

I personally see a great need for a business fraternity associated with the national chapter. I think a great deal will be realized by the fraternity in their associations with businesses that are in the area of Greenvale as well as from the town organizations; Greenvale being a typical college town located on the North Shore of Long Island, some thirty miles from New York City, and servicing the college which is just on the outskirts.

I sincerely hope this recommendation will assist them in their endeavor to be associated with the national fraternity.

Yours very truly,



Samuel J. Edgar
Ass't. Vice President
and Manager

SJE/ad

HOWARD T. HOGAN
ADMINISTRATIVE JUDGE

SUPREME COURT OF THE STATE OF NEW YORK
JUSTICES' CHAMBERS
MINEOLA, N. Y.

GREYHOUND WORLD'S FAIR, INC.
WORLD'S FAIR, NEW YORK



July 23, 1965

July 19, 1965

Mr. Charles L. Farrer
Executive Director
Delta Sigma Pi
333 University Drive
Oxford, Ohio

Dear Mr. Farrer:

Gentlemen: My son, Tommy, advises me that a local fraternity on the campus of C. W. Post College of Long Island University is making application to have established on the campus of this college, a chapter of your professional fraternity.

For the past I have been well acquainted with C. W. Post College from its very beginning and have watched its growth and development with keen interest. It has come to be one of the outstanding institutions on Long Island. Its School of Business Administration is regarded by business and industry generally, in this area, as being excellent. During the year, it sponsors many seminars and workshop programs to which are invited leaders of business and industry from all over the Country. Some of the leading economists in the Nation have lectured in this institution.

Of course, in addition to its fine School of Business Administration, it is equally well recognized for its other skills in liberal arts, sciences and education.

I have met some of the young men who have formed this local Chapter and I find them to be of excellent moral character and serious-minded citizens. I believe that affiliation with your national organization would bring not only distinction to the college campus, but also, it would be of service to the young men who are resident there.

It is a pleasure for me to recommend the local chapter of Beta Alpha Pi, unqualifiedly.

Sincerely yours,

Howard T. Hogan
Administrative Judge





GREYHOUND AT THE WORLD'S FAIR, INC.

WORLDS FAIR, NEW YORK

July 19, 1965

The Grand Chapter Congress
Delta Sigma Pi
Oxford, Ohio

Gentlemen:

I am an alumnus of Alpha Chapter of Delta Sigma Pi at New York University and a former officer of that Chapter.

For the past four (4) months, I have been in close contact with a group of young men at C. W. Post College, Long Island, New York who have expressed a desire to form a Chapter of Delta Sig on that Campus. This group, currently functioning as a local fraternity, Beta Alpha Pi, is planning to petition the Grand Chapter for admission. I am writing in support of this anticipated petition.

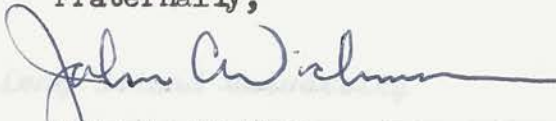
C. W. Post College, while relatively young in the academic world, is growing quite rapidly in both size and stature. Its affiliation with Long Island University will, over the next few years, add greatly to its growth. The Campus and Administration have provided a healthy atmosphere for fraternal organizations, and there exists a large reserve of students who meet the membership requirements of Delta Sigma Pi. All in all, C. W. Post would seem an excellent site for fraternal expansion.

The group currently comprising Beta Alpha Pi have, from their inception, indicated a strong desire to affiliate with Delta Sigma Pi. Their enthusiasm and ability has been exceptional and they have impressed me with their rapid growth and efficient organization. The Local already enjoys a good position on Campus and both financially and membershipwise are in excellent shape.

The members of the Local are, as a group, a fine example of collegiate Americans. They are, without exception, all of excellent character and personality. While the group has experienced the difficulties of any new organization, they have demonstrated perseverance and initiative in overcoming them.

It is my firm belief that the members of Beta Alpha Pi will make a significant contribution to Delta Sigma Pi. The fraternity would undoubtedly benefit from expansion to the C. W. Post Campus, and I wholeheartedly recommend the acceptance of their petition.

Fraternally,



John A. Wickman
Superintendent of Transportation

Long Island University

Long Island University's motto, "Urbi et Orbi," was an earnest of its purposive founders, based on their high hopes and aspirations. The institution has already made significant contributions both to the city and the world and is preparing greatly to increase its usefulness by services to the community and to the world at large, and especially to the democratic world.

This has been made clear by the record to date and by statements from William Zeckendorf, chairman of the board of Trustees, and President Richard Lansing Conolly revealing the University's plans for the future. The role of Long Island University in Brooklyn, as they see it, is to serve the special needs of an urban student body drawn from middle and lower income families, and to foster the democratic American tradition as the most effective bulwark against Communism. The same objectives will apply to the educational operations as they are developed for the C. W. Post College on Long Island, but by means of methods and curricular suited to the suburban communities.

The need for a privately-supported, non-sectarian, co-educational, liberal arts college to serve Brooklyn and Long Island was recognized by discerning leaders before the creation of Greater New York, in 1898. It was not until 1927, however, that a modest college of arts and sciences was initiated as the nucleus for a new university. The founding of Long Island University at that time was made possible by the generosity and persistent efforts of the late Ralph Jonas, lawyer,

philanthropist and long a distinguished civic leader of Brooklyn and New York City.

Mr. Jonas' notable services included active participation in organizing the New York City Board of Higher Education, the establishing of Brooklyn College, and the development of the Brooklyn Chamber of Commerce. With his brother, Nathan S. Jonas, he assured the expansion of the Brooklyn Jewish Hospital and the effective organization of the Brooklyn Federation of Jewish Charities and the merging of this philanthropy with the New York Federation of Jewish Charities. Ralph and Nathan S. Jonas were also instrumental in expanding the Manufacturers Trust Company and other financial and industrial corporations.

Besides Mr. Jonas, who was chairman, the first Board of Trustees included the following distinguished citizens: James Howell Post, Industrialist and noted philanthropist; William C. Redfield, Secretary of Commerce in Woodrow Wilson's Cabinet; Arthur Sylvester Somers, Civic Leader; Matthew Scott Sloan, industrialist; Frederick Evan Crane, Chief Judge of the New York State Court of Appeals, and Park A. Rowley, former president of the Manufacturers Trust Company.

The first Dean of the College of Arts and Sciences was Dr. George Robert Hardie, an experienced educator and former member of the New York State Education Department, who had held various administrative positions. His initial task was to organize an outstanding faculty, and in furthering this objective he travelled across the continent, visiting leading institutions and carefully assembling a group of educators of special

competence in their fields.

The university was formally opened on September 21, 1927. During the first year classes were held in rented quarters at 66 Court Street, with additional space in Montague and Remsen Streets. Mr. Jonas had made a gift of \$500,000, and in 1928 the University purchased the six-story building at 375 Pearl Street, which was to house the College of Arts and Sciences for the next fifteen years.

It was the intention of Mr. Jonas and other benefactors to make further large contributions to the institution, but following the stock market crash in 1929 this became impossible. During the depression, many students as well as some of the members of the faculty severed their connections with the University and it entered a long and trying period, with the depleted student body and loyal faculty trying to keep the insolvent institution functioning. The sole revenue at times came from student fees: the building was mortgaged, the Second World War further reduced enrollments. By December, 1941, some 1,300 alumni had graduated. Within a year or two 1,109 of these young men and women were in some form of service in the Armed Forces. At the War's conclusion the University was providing higher education mostly to veterans. The Building on Pearl Street had been lost and classes were scattered over most of Downtown Brooklyn - the Y. M. C. A., Brooklyn Law School, Edison Building, Brooklyn Children's Shelter, an office at 87 Willoughby Street, and the Brooklyn Eagle Building, with a few rooms over a bowling alley and over a bar and grill.

Through these years of adversity, the confident and tenacious spirit of the University's first president, Tristram Walker Metcalfe, was manifest. A former newspaper editor who had considerable experience in educational matters. Mr. Metcalfe had served as comptroller and dean before he was elected president in 1931, at the onset of the depression. He resolutely clung to the task of holding the University together and developing it. Even in its darkest days, Long Island University had demonstrated its usefulness.

In 1929, the Brooklyn College of Pharmacy had become part of the University and in 1939, the College of Podiatry was added. A further development came in 1950 when a Graduate School was established. In 1947, President Metcalfe entered into negotiations for the purchase of the 123 acre estate of Mrs. Joseph E. Davies at Brookville, Long Island. Subsequent litigation, extending over seven years, restricted his plans to the operation of a branch at Hicksville, Long Island, but in 1953 legal obstacles were removed and development of the Brookville center is an important part of the University's future program.

William Zeckendorf, president and principal owner of Webb & Knapp, one of the foremost real estate companies in the country, became president of the Board of Trustees in 1942, and in 1950 the University acquired the Paramount Theater Building on Flatbush Avenue Extension. After extensive alterations, this structure - now named Metcalfe Hall - became the home of the University and the nucleus around which

it is planned to develop a campus for an urban university with features which in the words of Chairman Zeckendorf, will "attract the attention of the world."

Long Island University's program of development is part of a larger project that is to transform a large area adjoining Fort Greene Park which, in turn, is part of the still more comprehensive plan for the development of Brooklyn's new Civic Center and the entire Downtown Brooklyn Area. Robert Moses, as chairman of the city's Slum Clearance Committee, initiated and secured approval of a project under Title J, of the Federal Housing Act of 1949, to have the city acquire some 20 acres between Myrtle and DeKalb Avenues, from Flatbush Avenue Extension to Fort Greene Park.

Through the generosity of Mr. Zeckendorf, who donated \$500,000 for the purpose, the University has acquired some seven acres of this land for a campus and future buildings. The remaining land will be devoted to two large modern housing projects, the extension of facilities for Brooklyn Hospital, and a shopping center.

President Metcalfe, Long Island University's first president, died in 1952, and Dr. William Marion Hudson, then Director of Students, became acting President and Dean of the College of Arts and Sciences. Dr. Hudson, who had been with the University for a quarter of a century, carried on the work of his predecessor with like courage and determination. On November 3, 1953, Admiral Richard Lansing Conolly, one of the nation's military heroes and a former president of the Naval

War College, became the second President of the University.

Under Chairman Zeckendorf and President Conolly, the University immediately began an energetic campaign to expand and develop the institution.

Now, with an over-all enrollment of more than 12,000 students, an active alumni association, an enlarged faculty, and officered by outstanding leaders, Long Island University faces a great future.



*Chancellor R. Gordon Hoxie
Long Island University*

Dr. Hoxie is a native of Waterloo, Iowa. He is the son of the late Dr. and Mrs. C. R. Hoxie. Dr. Hoxie was graduated with high honors from Iowa State Teachers College in 1940; received the M.A. degree on a scholarship from the University of Wisconsin in 1941, and the Ph.D. from Columbia University in 1950. During the period from 1946 through 1949, Dr. Hoxie served successively at Columbia as a Roberts Fellow, Roberts Traveling Fellow, and Assistant to the Provost. From 1950 through 1953 he was Assistant to the Chancellor at the University of Denver. Dr. Hoxie also edited the studies of the Social Studies Foundation and served as Assistant Professor of History at the University of Denver.

Returning to New York in 1953, Dr. Hoxie was project associate for the Columbia University bicentennial celebration. In 1954 he was named Dean of the College of Liberal Arts and Sciences of Long Island University. Shortly thereafter, Dr. Hoxie was named the first Dean of C. W. Post College of Long Island University and the president's deputy for Mitchel College, established for the armed forces. In 1960 he was named first provost of C. W. Post College, and in 1962 he was appointed Vice-President of Long Island University. On November 1, 1962, Dr. Hoxie was named President of C. W. Post College, and on July 15, 1964 he was appointed to the position of Chancellor of Long Island University.

Dr. Hoxie served on active duty in the Army Air Force from 1942-46. He is presently a Colonel in the U.S. Air Force Reserve. He has been cited by the Air Force several times for his outstanding contributions to the U.S. A. F. educational projects. Dr. Hoxie is also active in the Reserve Officers Association of the United States, the Air Force Association, and the Navy League.

A teacher of American history, geopolitics, and political science, Dr. Hoxie has taught or lectured at the University of Colorado, Colorado A&M, the University of Denver, the University of Wyoming, the Naval War College at Newport, R.I., Colorado

State Teachers College, Northwestern University, and Columbia University.

Dr. Hoxie has served as a consultant on college training and development programs and educational policies, and as advisor on military educational and training programs. He is a member of: Advisory Council, Robert A. Taft Institute of Government; Board of Directors, Greater New York Council for Foreign Students; Board of Directors, Long Island Association; Advisory Council, North Shore Chapter of the American Association for the United Nations; secretary, Commission on Governmental Revision for the County of Nassau; Co-Chairman, Nassau-Suffolk Conference of Christians and Jews; Juvenile Drug Addiction Study Commission for the Town of Oyster Bay; Board of Directors, Council of Higher Educational Institutions in New York City; and Board of Directors, Downtown Brooklyn Association. His professional organizations include: American Historical Association, Academy of Political Science, Kappa Delta Pi, Pi Gamma Mu, and Gamma Theta Upsilon.

He is the author of John W. Burgess, American Scholar, 1950; the principal author of A History of the Faculty of Political Science, Columbia University, 1955; and co-author of Freedom and Authority in Our Times, 1953. Dr. Hoxie was editor of Frontiers for Freedom, 1952; and has contributed numerous articles to professional journals.

Dr. Hoxie is a member of the Metropolitan Club of Washington, D.C. and the Century Association, New York City, the Brooklyn and Montauk Clubs in Brooklyn, New York, and an honorary member of the Old Westbury Golf and Country Club, Old Westbury.

His wife is the former Louise Lobitz, who formerly was Dean of Women at the Cincinnati Conservatory of Music. They reside at Old Westbury, New York.

LONG ISLAND UNIVERSITY

BROOKVILLE • NEW YORK

MAIL ADDRESS: GREENVALE, N. Y. 11548

THE CHANCELLOR

July 10, 1965

Grand Council
Delta Sigma Pi
Oxford, Ohio

Gentlemen:

As Chancellor of Long Island University, the parent institution of C. W. Post College, I was delighted to learn that some of our students have been pledged to your organization.

We believe strongly in having on our campuses a professional organization of high character and we shall cordially welcome a chapter of Delta Sigma Pi on our C. W. Post campus. Please be assured of my assistance toward that end.

Sincerely yours,


R. Gordon Hoxie
Chancellor

RGH:pt

cc: Beta Alpha Pi

LONG ISLAND UNIVERSITY

VICE CHANCELLOR
FOR ACADEMIC AFFAIRS

June 28, 1965

Mr. Barry Lesser
Secretary, Beta Alpha Pi
900 North Broadway
Yonkers, New York

Dear Mr. Lesser:

As Vice Chancellor for Academic Affairs of this institution, I am happy to learn that we may have a chapter of Delta Sigma Pi on the C. W. Post campus. I am sure that having such a chapter will be very helpful as we continue with the development of our program in business administration.

Sincerely yours,



Henry C. Mills
Vice Chancellor for
Academic Affairs

HCM:bw

Faint, illegible text at the top of the page, possibly a header or introductory paragraph.

Further faint, illegible text in the middle section of the page.

C. W. Post College

Main body of faint, illegible text, likely the primary content of the document.

Faint, illegible text at the bottom of the page, possibly a footer or concluding paragraph.

As early as 1946 the Board of Trustees of Long Island University, under the leadership of Mr. William Zeckendorf, Board President, and Dr. Tristram W. Metcalfe, President of the University, had conceived the idea of establishing a new college in the rapidly developing Nassau County area. It was conceived in terms of an institution offering day and evening liberal arts and sciences and business administration programs for residents of the Nassau and Western Suffolk County areas.

The site chosen in 1946 was the former Marjorie Merriweather Post estate of 176 acres. Due to concerted community opposition, the purchase was not consummated until December 1950. Bought for \$200,000, one-half of this sum was immediately returned to Long Island University by sale for \$100,000 of the western 50 acres.

Located along a principal north shore traffic artery, New York State Route 25-A, the site was well chosen and the ground beautiful. But little occupied for nearly a decade, the buildings were in need of improvement and modification for classroom purposes. The \$100,000 was expended towards that end. Announced as "the Brookville Branch" of Long Island University, its occupancy, like its purchase, was greeted by substantial opposition from many North Shore property owners. The Village of Brookville enlarged its incorporated limits in order to prevent, under its zoning authority, the operation of a college.

Meanwhile, Long Island University had temporarily set up classes beginning in January 1951 in the Hicksville High

School, with 202 evening students. The enrollment had risen to 307 by September 1951. Loaded in buses, they were rushed to Brookville early in 1952 in order to beat by a scant few hours the Village Zoning action. There followed a series of court actions in which the University was ably represented by Mr. Francis McGrath and Mr. Howard Hogan (Now Justice of the Supreme Court of the State of New York).

In 1953 Long Island University won its victory to operate its "Brookville Branch", but it appeared like a Pyrrhic victory, for in the midst of the battle, just as his apartment on the Brookville "campus" was nearing completion, President Metcalfe died. Uncertainties and the inhospitable climate combined to discourage enrollment at the Brookville campus. There had been 22 day students in the Spring Semester of 1952, but by the end of that semester the number was cut in half. Moreover, the evening enrollment was sharply reduced. From the peak of 307 students in Hicksville in September 1951, and 130 students in Brookville in September 1952, enrollment had declined to 55 students by 1953, and the entire full-time day program had disappeared. The community was still opposed to the branch, and many believed the effort should be given up.

Then, dramatically, Mr. Zeckendorf journeyed to Newport, Rhode Island, and persuaded Admiral Richard Lansing Conolly to accept the Presidency of Long Island University. Admiral Conolly retired from the Navy on November 2, 1953, and the following day moved to the Brookville campus. While his

principal office was in Brooklyn, he was not about to lower the flag at Brookville.

Readily, Admiral Conolly recognized the need for a totally new approach to this effort. Rather than simply a branch of the Brooklyn operation, a college with considerable local autonomy and identification must be created if it were to succeed. Mr. Grover Whalen of the Board of Trustees suggested that the college be named for Marjorie Post's father, C. W. Post, breakfast and health food producer, upon whose foundation was built the General Foods Corporation. Mrs. Post readily assented to the idea. The next step was to form an Executive Council, and an advisory body of local residents for the college. After much search, a half dozen persons were found willing to give their assent to membership in this new body.

Then a recognized educator had to be found to head the educational operation. In the Spring of 1954 Dr. R. Gordon Hoxie of Columbia University was chosen. During the Fall and Winter of 1954-55 he and Admiral Conolly laid plans for the new college, which was dedicated on November 29, 1954, when, in the Great Hall of her former residence, Marjorie Post unveiled a portrait of her father.

On March 15, 1955, at the first meeting of Long Island Educators convened by C. W. Post College, Dr. Hoxie addressed some 100 high school administrators, as many as were willing to hear of the new college. On March 18th the first application for admission was received. By September - when classes began -

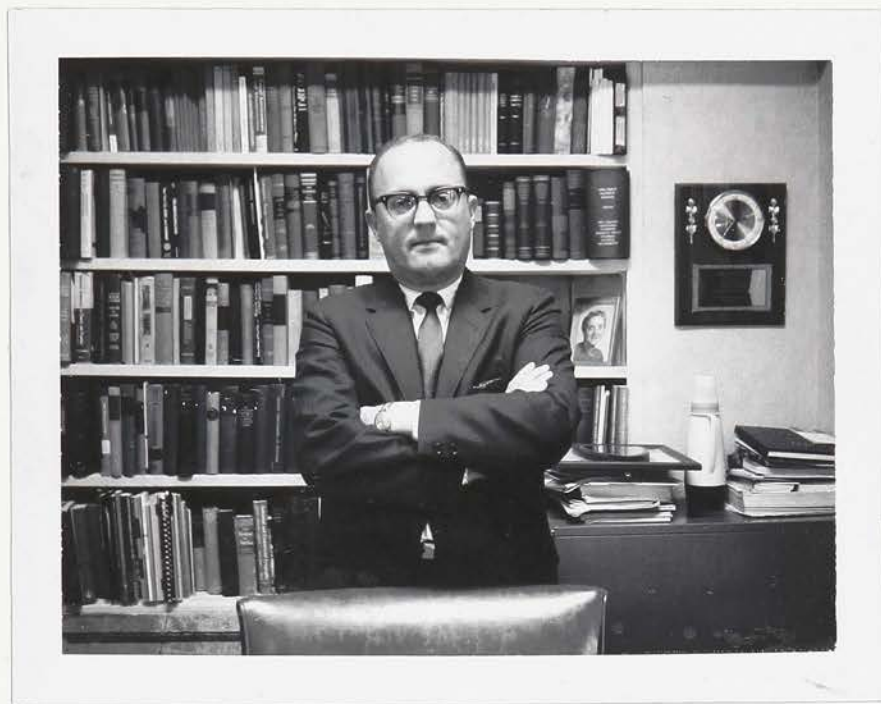
102 young men and 19 young women entered C. W. Post College along with 98 evening students. There were eight full-time faculty members, if one included the Librarian, the Admissions Officer, Registrar, and the Dean. There were, in addition, six part-time faculty members. Admiral Conolly, as President of Long Island University, assumed the additional title of President of C. W. Post College, and divided his time between the University in Brooklyn and the College. Both Admiral Conolly and Dean Hoxie resided on the Campus during this initial period.

The events which followed in the next ten years are both interesting and inspiring. Community hostility and apathy were transformed into support and interest. Faculty and student body underwent amazing growth. During the ten year period faculty increased from 14 to just under 400, students from slightly over 200 to more than 6200, and the entire character of the institution was transformed. Envisioned originally to serve only a commuting body of students, the College, by 1963, with nearly 1000 students residing on campus, had become Long Island's largest resident institution. Originally envisioned only as an institution for undergraduates, by 1963 with nearly 1200 graduate students, it had more than twice the number of graduate students than all other parts of Long Island University.

The first ten years of C. W. Post College's history is amazing, but this drive has not stopped. The ground is being broken for three new buildings during the Summer of 1965.

One of these will be a new library with a capacity of over one million volumes. Our present library has a capacity of 120,000 volumes and is overcrowded at the present time. Another building will be our interfaith Chapel which is being built wholly from funds raised by the student body. The third new building will house the Life Sciences.

Further indication of the College's development as one of the fastest growing institutions of higher learning in the United States, is evidenced in figures which reveal that the total budget for 1955-56 was \$169,363 and that eight years later the figure had increased to over \$6,000,000. Likewise, the College's physical plant, valued at \$347,737 in 1955, increased during the same period to over \$12,000,000.



Peter K. Ewald
Provost of C.W. Post College

C. W. Post College

OF
LONG ISLAND UNIVERSITY

NORTHERN BOULEVARD

BROOKVILLE, NEW YORK

MAILING ADDRESS: GREENVALE, NEW YORK, 11548 • TELEPHONE: MAYFAIR 6-1200

PROVOST

June 25, 1965

Mr. Barry Lesser, Secretary
Beta Alpha Pi
900 North Broadway
Yonkers, New York

Dear Barry:

As the chief academic and administrative officer of the C. W. Post College campus I am very pleased to learn that Beta Alpha Pi will be pledged as a chapter of the international fraternity of Delta Sigma Pi. Having a chapter of Deltasig on the campus is a recognition of the excellence of our Division of Business Administration and the students who comprise it.

The administration of C. W. Post College more than welcomes a chapter of Delta Sigma Pi. My congratulations to all of you, and I am looking forward to the installation of the chapter this Fall.

Fraternally yours,



Peter K. Ewald
Provost

PKE:mg



*Frederick S. Dellarr
Dean of Students*

C. W. Post College

OF

LONG ISLAND UNIVERSITY

NORTHERN BOULEVARD

BROOKVILLE, NEW YORK

MAILING ADDRESS: P.O. BOX 247, GREENVALE, NEW YORK • TELEPHONE: MAYFAIR 6-1200

July 13th, 1965.

DEAN OF STUDENTS

The Grand Council,
Delta Sigma Pi Fraternity,
Oxford, Ohio.

Gentlemen:

It has been brought to my attention that our local Business Fraternity, Beta Alpha Pi, is petitioning Delta Sigma Pi for membership.

I am pleased to recommend this group for your serious consideration. It is composed of high caliber young men who are dedicated to the business profession. I speak for the Administration of C. W. Post College when I state that we would be privileged to have a group the caliber of your National Organization on our campus.

With every good wish for the future success of Delta Sigma Pi Fraternity, I remain

Sincerely yours,



Frederick S. DeMarr
Dean of Students

FSD:CHS

C. W. Post College

OF

LONG ISLAND UNIVERSITY

NORTHERN BOULEVARD
BROOKVILLE, NEW YORK

MAILING ADDRESS: GREENVALE, NEW YORK • TELEPHONE: MAYFAIR 6-1200

June 16, 1965

OFFICE OF THE DEAN

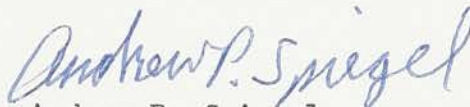
Mr. Barry Lesser
Secretary, Beta Alpha Pi
900 North Broadway
Yonkers, New York

Dear Mr. Lesser:

As Dean of C. W. Post College, I would be most happy to have a chapter of Delta Sigma Pi established on our campus.

It is the belief of C. W. Post College that our academic programs are important and that our students would be assisted by professional fraternities such as Delta Sigma Pi. It is my hope that you will be successful in your efforts.

Sincerely yours,



Andrew P. Spiegel
Dean

APS:wo'c

C. W. Post College

OF

LONG ISLAND UNIVERSITY

NORTHERN BOULEVARD

BROOKVILLE, NEW YORK

MAILING ADDRESS: GREENVALE, NEW YORK, 11548 • TELEPHONE: MAYFAIR 6-1200

June 23, 1965

Mr. Barry Lesser
Secretary, Beta Alpha Pi
900 North Broadway
Yonkers, New York

Dear Barry,

I am glad indeed to petition for a chapter on the C. W. Post College campus of the national business fraternity, Delta Sigma Pi. I do this primarily because Beta Alpha Pi has distinguished itself on this campus, especially in student life but also in our academic life, to an extent richly deserving this recognition.

I strongly urge the most serious consideration of this step by those in authority.

My warm congratulations to you and your colleagues in your continued success.

Cordially,



Harold Dean Cater
Director of Admissions
& Financial Aid

HDC/jw

The Campus

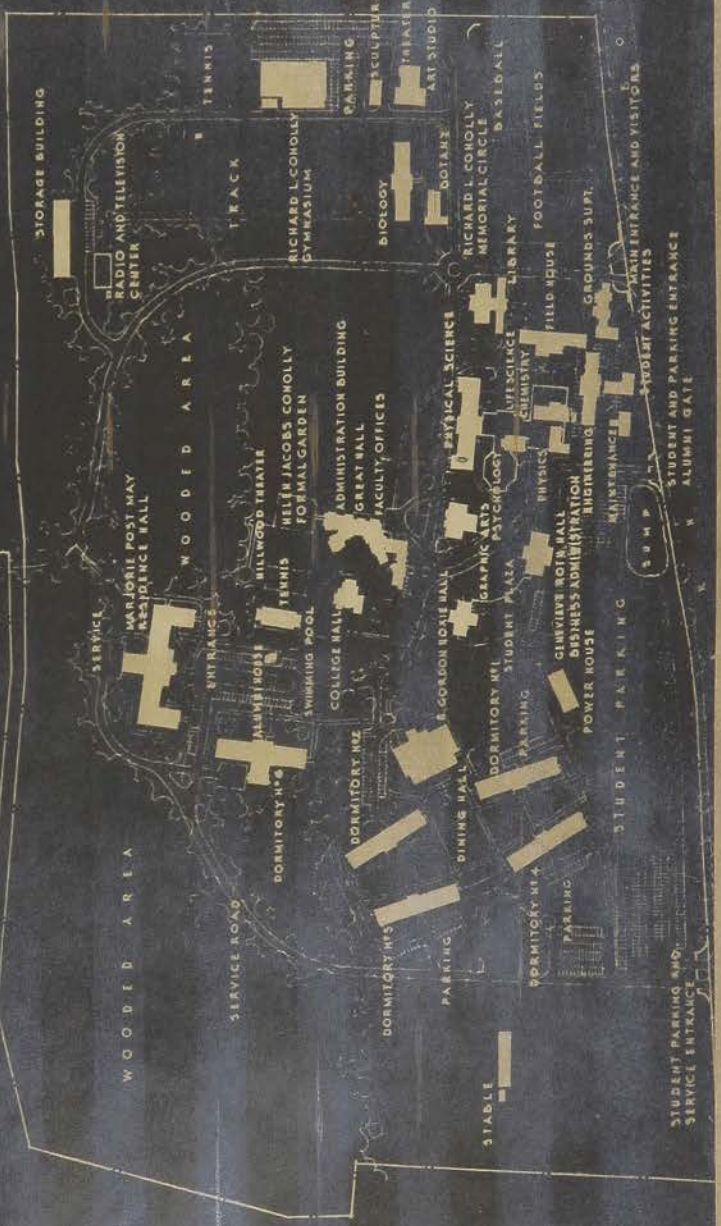
C. W. POST COLLEGE CAMPUS LONG ISLAND UNIVERSITY BROOKVILLE, LONG ISLAND

THE OFFICE OF
ALFRED SHAKNI 57 A.I.A.
PLANNING ARCHITECTS
201 N. 11TH ST. SUITE 200
GLEN HEAD, LONG ISLAND



NORTH

SCALE: 1" = 100' 200' 400'





Genevieve Roth Hall, home of the Arthur T. Roth Graduate School of Business Administration, offers the business community special institutes and seminars.



R. Gordon Hoxie Hall for Social Science, one of the newer buildings on campus, helps to meet the need for additional classrooms.



The Fine Arts Center is this former mansion which has been reconverted to its present use. Another major building to be erected nearby will house additional studios, an auditorium, lecture rooms, and a modern art gallery for exhibiting the great private and public collections.



*College Hall houses additional
classrooms and faculty offices.*



*Marjorie Post May Hall provides
resident facilities for 235 wo-
men students as well as 20 fac-
ulty apartments.*



*The John H. G. Pell Hall of
Physical Science and Engineer-
ing was completed in the fall
of 1964.*



The Benjamin Abrams Communications Center houses the College's radio station WCLIP and offers students excellent training in the field of communications.



Four new residence halls for men students offer attractive on-campus living facilities at C. W. Post College.

Business Administration at C. W. Post College

During the past ten years, the Division of Business Administration at C. W. Post College has expanded in a very rapid fashion. In 1956 there were three faculty members in the division and just a minimum number of courses in the basic areas of business. These courses were only offered to undergraduates.

Presently, the division is extremely proud of its forty faculty members, most of whom are privately practicing businessmen on days when they don't teach. Many members of the division are Certified Public Accountants.

A wide selection of courses in the fields of finance, management, accounting, law, and marketing are included in both the undergraduate and graduate curricula.

An undergraduate in the Division of Business Administration may select a major in general business or accounting. The general business major is exposed to instruction in all phases of business, including elementary accounting and must specialize in either management, marketing or finance, and must select advanced courses in his major field. The general business curriculum leads to a B.A. degree.

The accounting major receives theoretical and practical training in accounting, including taxation, as well as introductory courses in other areas. The accounting curriculum is designed to fully prepare the student to sit for the Certified Public Accounting Examination. Graduates receive the B.S. degree.

In addition to the expansion of courses and faculty, business organizations have been established at C. W. Post College. The Society for Advancement of Management was organized in 1958 with the guidance of Professor T. Henry Murphy, the faculty advisor. This organization has sponsored numerous functions, such as field trips and appearances by noted business speakers representing numerous companies. Several Career Day Conferences have been held on campus, and

every Spring, an awards dinner is held to honor great men who have pioneered in the field of management. This Spring, Mr. C. R. Smith, Chairman of the Board and Chief Executive Officer of American Airlines, Inc., received the S.A.M. Award. Past award recipients include Arthur T. Roth, Chairman of the Board of Franklin National Bank. In 1958 the Graduate School of Business was named after this outstanding business leader. Another award recipients have been John Carter, President of Fairfield Camera and Instrument Corporation (1961) and Mundy J. Peale, former president of Republic Aviation Corporation.

This business organization has grown rapidly in the last year through the leadership of Mr. Stephen H. Spector, president and Professor T. Henry Murphy, advisor.

In 1963, several accounting majors formed the Accounting Society of C. W. Post College. With Professor Samuel Person as its advisor, it has made tremendous strides and it now has regular programs of guest speakers, discussions, and social events throughout the year. In May these members hold an annual dinner where outstanding students receive awards.

A number of faculty members have served on academic committees of the College and the Middle States Association. Professor Murphy has served on the Coordinating Enrollment and Admissions Committees of the Middle States Association, as well as on the Admissions Committee of the College. He is currently the chairman of the Department of General Business at C. W. Post College. Professor Charles Zwicker, the chairman of the Accounting Department, has served on committees dealing with fraternities, athletics, and student publications. He is now the Director of Alumni Affairs.

The Provost of C. W. Post College, Peter K. Ewald, is one of the brothers of Delta Sigma Pi. The director of the Division of Business Administration is Dr. Edward Cook, who has given much assistance to the students in the division.

The Division of Business Administration has progressed

tremendously in terms of the variety of courses and the faculty. The student in this division receives the necessary instruction and activity today in order that he may serve as the business leader of tomorrow.



Dr. Edward J. Cook
Director of Division of Business Administration

C. W. Post College

OF

LONG ISLAND UNIVERSITY

NORTHERN BOULEVARD

BROOKVILLE, NEW YORK

MAILING ADDRESS: P.O. BOX 247, GREENVALE, NEW YORK • TELEPHONE: MAYFAIR 6-1200

DIVISION OF BUSINESS ADMINISTRATION

June 25, 1965

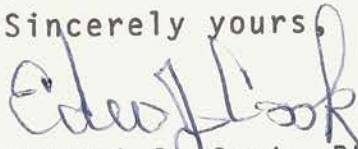
International Fraternity
of Delta Sigma Pi
Oxford, Ohio

Gentlemen:

It has come to my attention that Beta Alpha Pi, a fraternity at C. W. Post College, is seeking affiliation with Delta Sigma Pi.

The faculty of the Division of Business Administration joins me in the belief that a chapter of Delta Sigma Pi at C. W. Post College will be of material assistance in maintaining the high academic standards which we seek. The faculty appreciates the consideration extended to our students by the national officers of Delta Sigma Pi.

Sincerely yours,



Edward J. Cook, Ph.D.
Director

ejc/md

Mr. [Name]
Secretary
[Address]
[City], [State]

Dear Mr. [Name],

[Faint text]

Dr. Cono Casella

*Associate Dean of the Arthur T. Roth Graduate
School of Business Administration at C. W.
Post College.*

[Faint text]

LONG ISLAND UNIVERSITY
Arthur T. Roth Graduate School of Business Administration

C. W. POST CAMPUS
BROOKVILLE, NEW YORK
P.O. GREENVALE, N. Y. 11548

CHIEF DEAN

June 28th, 1965

Mr. Barrt Lesser
Secretary, Beta Alpha Pi
900 North Broadway
Yonkers, N. Y.

Dear Mr. Lesser,

In reply to your letter of June 11, in which you request a letter of recommendation to Delta Sigma Pi, please be assured that I join my fellow colleagues in encouraging and promoting such a fine idea. I strongly feel that a chapter of Delta Sigma Pi will be of material assistance in maintaining the high academic standards which we seek.

We appreciate the consideration extended to our students by the national officers of Delta Sigma Pi.

Sincerely yours,



Cono Casella

CC:pd

Faculty



*T. Henry Murphy
Chairman of General Business Department*

Professor Murphy, or Father Murphy, as he is more fondly called, is Post College. He is our "Mr. Chips." Being interested in the students personally as well as scholastically, his door is always open. Never has he been known to refuse a student a moment of his leisure time.

He has spent endless hours working towards the development of C.W. Post. His constant smile, cordial air, and geniality makes the years at college a pleasant and wonderful experience.

Through his effort and guidance our department of Business Administration has grown and improved a thousand-fold. His working knowledge of business and his experience as a college professor helped to raise the standards of Post to become the institution it is today. C.W. Post College is said to be the fastest growing college in the United States and Professor Murphy has helped the rapid expansion in every way possible.

C. W. Post College

OF

LONG ISLAND UNIVERSITY

NORTHERN BOULEVARD

BROOKVILLE, NEW YORK

MAILING ADDRESS: P.O. BOX 247, GREENVALE, NEW YORK • TELEPHONE: MAYFAIR 6-1200

DIVISION OF BUSINESS ADMINISTRATION

July 6, 1965

National Council
Delta Sigma Pi

Gentlemen:

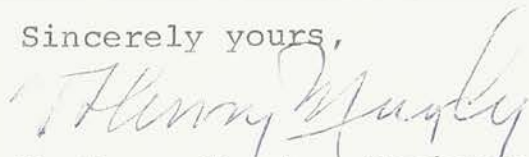
I would like to extend my sincere congratulations to the members of Beta Alpha Pi at C. W. Post College for their ambitious endeavors in furthering the field of business as a true profession.

It would certainly be an honor and privilege to have Delta Sigma Pi become an integral part of our college.

As an advisor of the Society for Advancement of Management, I fully realize that a business organization can only achieve meaningful goals if its members, working in unison, can constantly demonstrate their fullest capabilities throughout the year. I do not hesitate in saying each and every member of your chapter at C. W. Post College has contributed excellent, worthwhile work to further their business education.

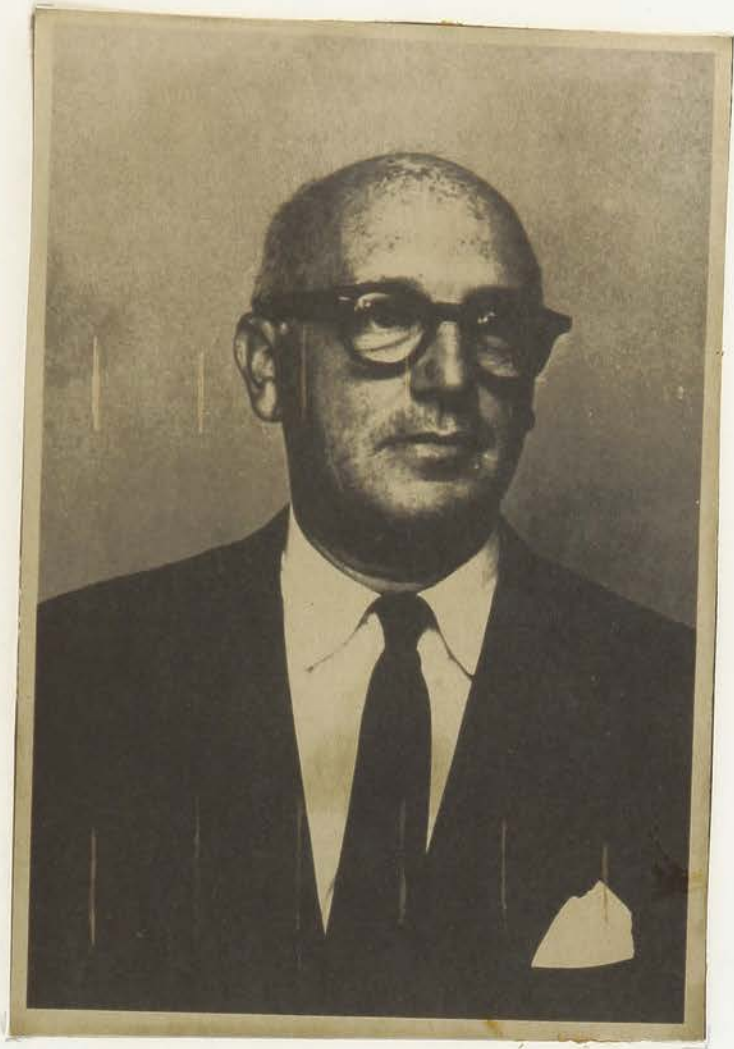
A professional organization, such as yours, would be more than welcome on campus. I give my personal commendation to the members and am looking forward to greeting national members of Delta Sigma Pi very soon.

Sincerely yours,



T. Henry Murphy, Chairman
Department of General Business

THM/md



*Charles Zwicker
Chairman of the Accounting Department*

Professor Zwicker is Chairman of the Accounting Department in every sense of the word. His thirty-one years of experience with his own accounting firm enables him to command the respect of all sub-divisions of the Business Department.

Professor Zwicker received both his B.S. and M.B.A. degrees from New York University. He became a certified public accountant in New York State in 1934 and has maintained an active accounting practice ever since.

As Director of the Tax Institute of C.W. Post College, Professor Zwicker brings outstanding Tax accountants and Tax attorneys together to discuss topical tax problems. At the last meeting over eight-hundred men met under Professor Zwicker's able leadership.

C. W. Post College

OF

LONG ISLAND UNIVERSITY

NORTHERN BOULEVARD
BROOKVILLE, NEW YORK

MAILING ADDRESS: P.O. BOX 247, GREENVALE, NEW YORK • TELEPHONE: MAYFAIR 6-1200

DIVISION OF BUSINESS ADMINISTRATION

June 21, 1965

Mr. Barry Lesser
900 North Broadway
Yonkers, New York

Dear Mr. Lesser:

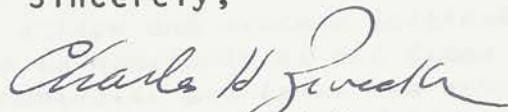
I wish to commend you on your being pledged to Delta Sigma Pi.

I think that having C. W. Post College represented among the chapters of this fine national fraternity is a good thing for the College.

Beta Alpha Pi, as a professional business fraternity, has established an excellent reputation at the College, and I fully expect that as a chapter of Delta Sigma Pi, you will achieve new heights of excellence.

My best wishes go to you.

Sincerely,



Charles H. Zwicker

chz/md



Stanley Willing

Dr. Willing has brought to the students of Business at Post College a working knowledge of the world of Finance. His vast and endless business experience enables him to provide his students with the practical view of finance that so often escapes the field of theory.

Dr. Willing has received his Bachelor's, Master's and Doctorate degrees from New York University. He has been an instructor at the New York University School of Commerce, the director of the New York School of Fashion Design, the director of the Guidance Center of New York University and Hunter College, as well as director of the New York correspondence school.

He is the president of the Willing Association, Inc., and has been a consultant to both the United States House of Representatives, Committee of Education and the New York State Department of Education.

Dr. Willing has taken an active and sincere interest in the men at Post College. He is available at all times for consultation on personal or scholastic problems. His sincere interest in the school and the students has gained him the total respect of both the faculty and students alike.

It is our desire, as Brothers of Beta Alpha Pi, that in the future, with the permission of Delta Sigma Pi and of Professor Hallman, that we might ask Dr. Willing to be a co-advisor to our fraternity along with Professor Hallman. We feel that since both gentlemen have such outstanding qualifications, and since they take such an intent interest in our well being, that through their combined advice, guidance and experience, there would be no limitations to what we might accomplish as a Professional Fraternal Organization.

C. W. Post College

OF

LONG ISLAND UNIVERSITY

NORTHERN BOULEVARD

BROOKVILLE, NEW YORK

MAILING ADDRESS: P.O. BOX 247, GREENVALE, NEW YORK • TELEPHONE: MAYFAIR 6-1200

DIVISION OF BUSINESS ADMINISTRATION

June 19, 1965

National Council
Delta Sigma Pi

Gentlemen:

As a Professor of Business Administration I would consider it a privilege indeed if you would grant to our institution the honor of having a chapter of your professional organization on our campus.

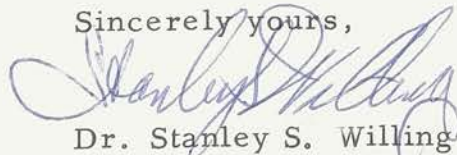
I have taught business at several colleges for the past fourteen years and have had first hand experience with your chapters. I can certify to the esteem with which they are held and to the excellent work they are doing to further the cause of business as a profession.

Our developing institution has need of a chapter to provide an important element in the education of our students. I know all of the students who would form the core of this chapter and I can assure you that they are most worthy of such an honor. They are able, interested, and most of all, conscious of the real meaning of such affiliation.

I would have no hesitation in commending these men to you and no qualms about sponsoring this chapter here at C. W. Post College.

Thank you for your consideration.

Sincerely yours,



Dr. Stanley S. Willing
Professor of Business Administration

Dr. J. Edward Weich

One of the more politically oriented of our business professors is Dr. Edward Weich. Dr. Weich, the advisor of the Pre Law Society and Alpha Epsilon Pi, has brought to the Post campus many speakers of note, amongst them being the Hon. Robert F. Kennedy and several members of the New York State Judiciary.

Dr. Weich, an associate professor at Post, received his Bachelor's Degree at C.C.N.Y., and his LL.B. and J.S.D. at St. Lawrence. Besides maintaining an active law practice here on the Island, he manages to fit in sufficient time for counseling his students.

C. W. Post College

OF

LONG ISLAND UNIVERSITY

NORTHERN BOULEVARD

BROOKVILLE, NEW YORK

MAILING ADDRESS: P.O. BOX 247, GREENVALE, NEW YORK • TELEPHONE: MAYFAIR 6-1200

DIVISION OF BUSINESS ADMINISTRATION

June 28th 1965

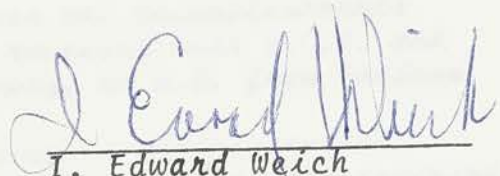
Mr. Barry Lesser
900 North Broadway
Yonkers, New York

Dear Mr. Lesser,

In answer to your letter of June 11th, the faculty of the Division of Business Administration joins me in the belief that a chapter of Delta Sigma Pi at C. W. Post College will be of material assistance in maintaining the high academic standards which we seek.

We deeply appreciate the consideration extended to our students by the national officers of Delta Sigma Pi.

Very truly yours,



I. Edward Weich
Associate Professor
of Business Administration

IEW:pd

Robert D. Bell

Professor Bell, upon graduation from an undergraduate college, attended St. John's University School of Law. He received his LLB from there in 1951.

Not only has he been a lecturer and instructor at C.W. Post College, the Sobelken School, and the United States Army, but he also remained as an active member on the political front. He is the town attorney for the town of Hempstead as well as the executive director of the Nassau County Charter Revision Committee.

Robert Bingamen

Professor Bingamen has come to Post College with a great deal of previous educational experience.

In 1927 he received his A.B. from Simpson and in 1935 he was awarded his Master's Degree at Iowa.

After receiving his Master's Degree he taught in high school and college in Nebraska, Arizona, and Minnesota. He has served as the chairman and instructor at Central College and West Virginia Tech; Dean of the Associated Colleges of New York; Chairman and Professor of Business Administration of Hofstra University; Professor of Economics at Mitchell College; Senior Auditor of Republic Aviation and as the director of the State Civil Service in West Virginia.

Without any question, he has come to Post with a great deal of valuable experience.

Arthur Blake

To list Professor Blake's degrees and accomplishments would be an everending task. He has received both B.C.S. and M.C.S. degrees from New York University, an A.M. from Fordham as well as having a C.P.A. title.

As an assistant Professor of Business Administration, he has brought to Post years of experience gained from teaching at some eight colleges and universities in the New York State area; some of which are Harper College, Russell Sage, and Fordham University.

Alfred Bornemann

Dr. Bornemann has received his Bachelors, Masters, and Doctorate degrees at New York University.

As a Professor of Economics and Business Administration, he has served on the faculties of some nine colleges and universities; some being St. Francis, Rutgers, N.Y.U., Brooklyn College and Florida State.

Not only does he come to Post with this vast background,

but also with the experience of having worked with City Service and the American Waterworks and Electrical Company, Inc.

Harvey J. Bresler

Professor Bresler obtained a Business and Master's Degree from Columbia University.

Professor Bresler is a splendid example of the calibre of instructors here at Post College. He is a man with over thirty years of executive experience in some of the finest advertising agencies in New York City. He brings into the classroom electrifying examples of personal experiences which brings the student in contact with real, practical problems of the business world.

He presents his material in such a manner that the students are free to discuss the cases. He guides them and presents possible objections which the students case decisions might bring forth. In all, being a student in Prof. Bresler's class, as in the other classes of Business Administration at the college, is a stimulating and provocative experience.

Patrick J. Gallagher

Professor Gallagher, a C.P.A. and a member of the New York Bar Association has brought to our college a great deal of personal experience.

Being a practicing attorney, he is constantly presenting his students with changes in the law and with cases which can well be applied to the subject matter under discussion.

Russell E. Rozea

Professor Rozea received his A.B. degree from Loyola in 1933, his LL.B. from St John's University in 1936, and his J.S.D. from St. John's University in 1937.

A stimulating instructor, Prof. Rozea brings to the class experiences from Rider College and Fordham University. As past director of guidance and counseling at Trenton State Prison, he is able to discuss with his students interesting and noteworthy problems which confront individuals within the legal profession.

Thomas Salvatre

An instructor with a sound educational background, Professor Salvatre keeps his classes alert by discussing problems he has encountered as a Security Analyst, and as a practicing broker with Merrill, Lynch, Pierce, Fenner, and Smith.

Through careful guidance on the part of Professor Salvatre, the students are taught to examine, evaluate and reason with unceasing acuity.

Irving Schreiber

Professor Schreiber has been an instructor at Fairleigh Dickenson and New York Universities. While at N.Y.U. he was teaching at the Federal Tax Institute.

He has served as the Executive Editor of the Institute of Business Planning Inc., and is also a registered C.P.A.

Beta Alpha Pi

History of Beta Alpha Pi Fraternity

The idea of establishing a chapter of Delta Sigma Pi on the campus of C.W. Post College came from the Provost of the college, Dr. Ewald, an alumni of Delta Sigma Pi.

During the month of September 1964, Provost Ewald contacted Mr. Charles Ferrar, Executive Director of Delta Sigma Pi, in order to explore the possibility of establishing a chapter at C.W. Post College. After obtaining the approval of Mr. Ferrar, Provost Ewald contacted Dr. Cook, Director of the Business Department at C.W. Post College, to make the necessary arrangements and to lay the ground work for future establishment of the fraternity. Dr. Cook, in turn, asked Professor Louis Hallman of the Accounting Department to approach the Business majors on the subject in order to determine the amount of student interest in such a vast undertaking.

Arrangements were then made with Mr. Ferrar to meet with Dr. Cook, Professor Hallman, and several of the interested students. Mr. Ferrar spoke to this group about Delta Sigma Pi and outlined the requirements that must be met in order to become affiliated with the national organization. He explained the differences between a professional fraternity as opposed to a social fraternity, and advised the group as to the procedure to follow in establishing a local chapter.

The student founders of our local organization had their first meeting just prior to Christmas vacation. Organizational officers were appointed and plans for the future were discussed. At the conclusion of the Christmas recess, the officers held a meeting with Dean Dellmarr. Official school permission to organize a local professional business fraternity was given along with \$135.00, the fee for the national charter from Delta Sigma Pi. This sum will be paid when we actually affiliate with the national fraternity.

The following meeting brought about the creation and adoption of the by-laws. These have since been typed and submitted to the membership, and approved. Plans were made for a membership drive and the necessary publicity needed.

Lou O'Donnell gave talks about the fraternity to the students of many of the undergraduate business classes. Posters were placed around the campus, and the solicitation of members began.

At our next meeting, a large group of interested students heard Dr. Cook give official school recognition to the organization and witnessed the official beginning of the local fraternity, Beta Alpha Pi, Post College's only Business Fraternity and the school's first professional fraternity.

CALENDAR OF MEETINGS AND ACTIVITIES

- February 3 First meeting held. The executive officers were appointed. Membership requirements were discussed.
- February 17 First speaker, Mr. John Wickman of the Alpha Chapter of Delta Sigma Pi, spoke to those interested students on the formation of a business fraternity.
- February 25 Guest speaker, Mr. John Marko, Director of the Eastern Region of Delta Sigma Pi, spoke to the executive officers as to the procedure to follow for organizing a business fraternity that would desire to affiliate with the national fraternity.
- February 27 Business meeting
- March 4 Prospective members of the fraternity were interviewed.
- March 17 Business meeting
- March 19 35mm. slides were shown to the brothers concerning all aspects of Delta Sigma Pi.
- March 30 Business meeting
- April 5 Guest speaker, Lieutenant Colonel Amos B. Sharets, of the United States Air Force Reserves, spoke to the brothers on a possible career in the Air Force for business students.
- April 20 Guest speaker, Mr. Garrett Zebrowski, Registered Representative of Edwards and Hanley, spoke to the brothers about the New York Stock Exchange and answered questions regarding the possibility of a career in the Stock Market.
- April 28 Mr. John Marko witnessed our progress to date. Committee chairmen gave reports as to the progress of Beta Alpha Pi's attempts to organize and maintain a business fraternity.
- May 11 Nomination of officers for the 1965-1966 school year.
- May 18 Election of officers:
- President - Theodore Seiter
Senior Vice President - Ralph Olleo
Vice President - Arthur Nersesian
Secretary - Barry Lesser
Treasurer - Edward Kara
Historian - Thomas Hogan

Appointment of Chancellor and Committee Chairmen:

Chancellor - John Fleming

Petition Committee - Stephen Spector

Finance Committee - Edward Kara

Communications Committee - Gene Spitzer

Public Relations Committee - Fred Kaufman

Social Committee - Stephen Spector

Professional Committee - Ken Malmstrom

Scholarship Committee - Carleton Erwood

Rooms and Refreshment Committee - Richard Watkins

Faculty Advisor



Louis Hallman

As our Fraternity advisor, Professor Hallman has expressed a great deal of interest in our being. We have tried, and succeeded, in forming a fraternity of which he and the college are proud of.

Beta Alpha Pi has benefited a great deal from the opinions and guidance of Professor Hallman. Although we have done all the work on our own, he has always been available and willing to give us a hand whenever needed.

Professor Hallman has received his Bachelor's and Master's degrees from New York University and is a registered C.P.A. As our instructor he takes the time and effort to explain every minute detail in his accounting courses. He is an easy going and considerate instructor who makes certain that all students understand their assignments thoroughly before progressing.

It is indeed an honor to have an individual of Professor Hallman's character, ability, and integrity as a Faculty Advisor and moreover as a Brother of Beta Alpha Pi.

C. W. Post College

OF

LONG ISLAND UNIVERSITY

NORTHERN BOULEVARD

BROOKVILLE, NEW YORK

MAILING ADDRESS: P.O. BOX 247, GREENVALE, NEW YORK • TELEPHONE: MAYFAIR 6-1200

DIVISION OF BUSINESS ADMINISTRATION

June 24th, 1965

Mr. Barry Lesser
Secretary, Beta Alpha Pi
900 North Broadway
Yonkers, New York

Dear Mr. Lesser,

Reference is made to your letter dated June 11, 1965 requesting a letter of recommendation to Delta Sigma Pi.

During the past six months I was honored to be selected as the faculty advisor to Beta Alpha Pi, and had the privilege and good fortune to mingle with the members of this fraternity at C. W. Post College. My experience with them at the fraternity and in the class room has been extremely gratifying.

I wholeheartedly recommend this group to be pledged as members of Delta Sigma Pi.

Yours truly,



Louis Hallman
Faculty Advisor
Beta Alpha Pi

LH:pd

Brothers of Beta Alpha Pi



THEODORE J. SEITER

PRESIDENT

NAME: Theodore J. Seiter
PLACE OF RESIDENCE: Valley Stream, New York
DATE OF BIRTH: 8/25/42
MAJOR: Accounting
ACCUMULATIVE AVERAGE: B
ORGANIZATIONS: Accounting Society

INTERESTS: boating, water skiing, sports

Ted was the Treasurer of Beta Alpha Pi, and Chairman of the Finance Committee. In this capacity he organized the books of account, collected dues, and opened a bank account in the name of the Fraternity. Ted was elected President of Beta Alpha Pi for the coming 1965-1966 school year, and was instrumental in organizing the petition.

Ted, a transfer student from Villanova University plans to go to Law School at New York University or Georgetown University.



RALPH OLLEO
SENIOR VICE PRESIDENT

NAME: Ralph Olleo

PLACE OF RESIDENCE: Glen Cove, New York

DATE OF BIRTH: 1943

MAJOR: General Business

ACCUMULATIVE AVERAGE: C+

ORGANIZATIONS: Society for the Advancement
of Management

INTERESTS: golf, electronics, woodworking

Ralph, as the first secretary of Beta Alpha Pi, organized the minutes of all our meetings and attended to correspondence with Delta Sigma Pi.

Ralph was elected Senior Vice-President of Beta Alpha Pi for the coming 1965-1966 school year.



ARTHUR NERSESIAN

VICE PRESIDENT

NAME: Arthur Nersesian

PLACE OF RESIDENCE: Willison Park, New York

DATE OF BIRTH: 11/15/43

MAJOR: Accounting

ACCUMULATIVE AVERAGE: C

ORGANIZATIONS: Society for the Advancement
of Management, Accounting, Armenian Youth Fed.

INTERESTS: music, boating, swimming

Art was a member of the Communications
Committee and also was an avid entertainer
at our election party.

Art plans to graduate and work for an
accounting firm.



BARRY J. LESSER

SECRETARY

NAME: Barry J. Lesser

PLACE OF RESIDENCE: Yonkers, New York

DATE OF BIRTH: 6/10/44

MAJOR: Accounting

ACCUMULATIVE AVERAGE: C+

ORGANIZATIONS: Accounting Society, New York Chapter of DeMolay

INTERESTS: music, coin collecting

Barry has played an important part in Beta Alpha Pi. He coordinated the correspondence and letters of recommendation from the teachers and other faculty members for the petition.

Barry plans on a B.S. degree in Accounting and a possible future in Law.



EDWARD KARA

TREASURER

NAME: Edward Kara

PLACE OF RESIDENCE: Huntington, New York

DATE OF BIRTH: 5/21/44

MAJOR: Accounting

ACCUMULATIVE AVERAGE: C+

ORGANIZATIONS: Accounting Society

INTERESTS: skiing, sports, boating, cars

Ed worked dilligently with the Finance Committee of Beta Alpha Pi in setting up the books of account, and he was elected treasurer for the coming 1965-1966 school year.

A Master's Degree is in Ed's future and he also wants to take the C.P.A. exam.



H. THOMAS HOGAN
HISTORIAN

NAME: H. Thomas Hogan

PLACE OF RESIDENCE: Farmingdale, New York

DATE OF BIRTH: 12/7/44

MAJOR: Marketing

ACCUMULATIVE AVERAGE: B

ORGANIZATIONS: Kappa Alpha Fraternity,

Student Council at University of Arizona

INTERESTS: hunting, fishing, gun collecting

Tom was pledge class president and pledge trainer of the social fraternity he belonged to. He will be a helpful asset to our future organization.

In addition, Tom was in charge of organizing a fraternity file and was a member of the Public Relations Committee.



JOHN FLEMING

CHANCELLOR

NAME: John Fleming
PLACE OF RESIDENCE: Franklin square, New York
DATE OF BIRTH: 7/19/44
MAJOR: Accounting
ACCUMULATIVE AVERAGE: C+
ORGANIZATIONS: Accounting Society

INTERESTS: boating, driving

John was the head of the communications committee and did a remarkable job of notification using address lists, post cards, and phone calls. As a result, meetings generally had 100% attendance.

John plans to graduate in 1966 and enter the Federal Bureau of Investigation or do work as an accountant.



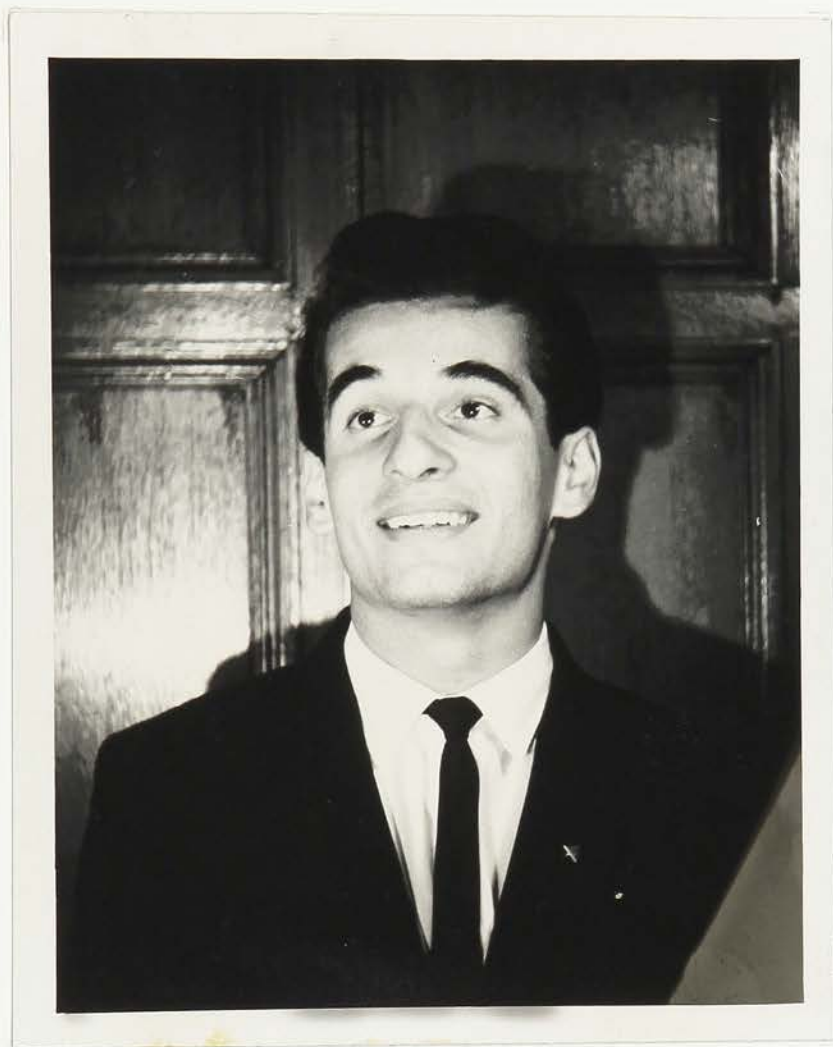
STEPHEN HOWARD SPECTOR

PETITION CHAIRMAN

NAME: Stephen Howard Spector
PLACE OF RESIDENCE: Greenvale, New York
DATE OF BIRTH: 12/30/41
MAJOR: General Business and Political Science
ACCUMULATIVE AVERAGE: B
ORGANIZATIONS: Who's Who Among Students in
American Universities and Colleges, Society
for the Advancement of Management
INTERESTS: History, Political Science, reading

Steve was the first Vice President of Beta Alpha Pi and was chairman of the all-important petition committee. He was appointed chairman of the Social Committee for the 1965-1966 school year.

Steve looks forward to a B.S. degree from C.W. Post College and an eventual Law Degree from New York University or Fordham University.



JOSEPH ATTARD

NAME: Joseph Attard

PLACE OF RESIDENCE: Farmingdale, New York

DATE OF BIRTH: 6/18/45

MAJOR: General Business

ACCUMULATIVE AVERAGE C

ORGANIZATIONS: Young Democratic Club

INTERESTS: boating, cars, outdoor activities

Joe, a general business major, and a leader in the Young Democratic Club, intends to seek a Master' Degree in management from New York University.



LARRY BAUMANN

NAME: Larry Baumann

PLACE OF RESIDENCE: Great Neck, New York

DATE OF BIRTH: 2/3/43

MAJOR: Accounting

ACCUMULATIVE AVERAGE: C

ORGANIZATIONS: Knights of Columbus, Nassau
Alliance Baseball Club

INTERESTS: athletics, outdoor activities

Larry, an active organizer for our Fraternity,
has been beneficial in obtaining campus
recognition for Beta Alpha Pi.
He is in hopes of seeking a Master's Degree in
accounting.



THOMAS BOWES

NAME: Thomas Bowes

PLACE OF RESIDENCE: Woodside, New York

DATE OF BIRTH: 3/23/45

MAJOR: Accounting

ACCUMULATIVE AVERAGE: B

ORGANIZATIONS: Accounting Society

INTERESTS: water skiing, sports, accounting

Tom is a member of the finance committee and along with Ted Seiter has helped organize the fraternity's accounts.

Tom plans on attending graduate school and becoming a C.P.A.



CARLETON R. ERWOOD

NAME: Carleton R. Erwood
PLACE OF RESIDENCE: Amityville, New York
DATE OF BIRTH: 12/21/41
MAJOR: Accounting
ACCUMULATIVE AVERAGE: B
ORGANIZATIONS: Accounting Society
Amityville Fire Department
INTERESTS: hunting, fishing, coin&stamp coll.

Carl has been responsible for doing a great deal of work on the initial planning of the petition and in organizing Beta Alpha Pi. Carl plans on obtaining a Master's Degree in accounting and is in hopes of becoming a practicing C.P.A.



ROY GORMAN

NAME: Roy Garman

PLACE OF RESIDENCE: Hicksville, New York

DATE OF BIRTH: 8/2/44

MAJOR: Accounting

ACCUMULATIVE AVERAGE: C

ORGANIZATIONS: Soccer Team, Accounting
Society

INTERESTS: athletics, outdoor sports

Roy will graduate from C.W. Post College
in the Spring of 1966 and is desirous of
pursuing a career as a C.P.A.



CRAIG HUBMEYER

NAME: Craig Hubmeier

PLACE OF RESIDENCE: Floral Park, New York

DATE OF BIRTH: 3/21/41

MAJOR: General Business

ACCUMULATIVE AVERAGE: C+

ORGANIZATIONS: Society for the Advancement

of Mgmt., Student Advisory Council, Rolls Royce
Owners Club

INTERESTS: music, woodworking, antique automobiles

Craig was instrumental in organizing Beta Alpha Pi, and was its first President. He worked dilligently and devoted a great deal of his time to the formation and operation of Beta Alpha Pi.

Craig graduated from Post this spring and plans to work as an investment representative for a brokerage house. He also plans to work toward a M.B.A. at New York University or Columbia University.



FRED KAUFMAN

NAME: Fred Kaufman

PLACE OF RESIDENCE: Roslyn, New York

DATE OF BIRTH: 4/5/44

MAJOR: Accounting

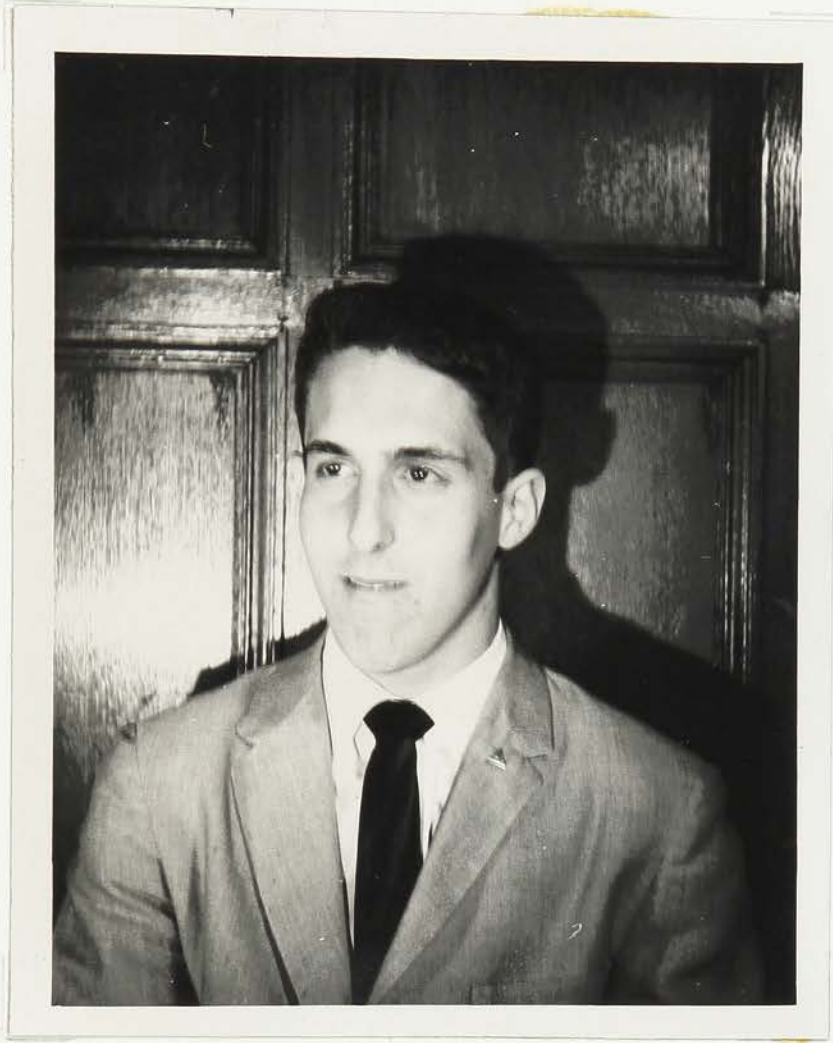
ACCUMULATIVE AVERAGE: B

ORGANIZATIONS: Accounting Society

INTERESTS: sports, accounting

Fred is in charge of the communications committee. Through his efforts all the brothers of Beta Alpha Pi have been well informed prior to meetings.

Not unlike many other brothers, Fred will graduate with a B.S. degree in accounting.



CHARLES KRUGER

NAME: Charles Kruger

PLACE OF RESIDENCE: Bronx, New York

DATE OF BIRTH: 3/7/47

MAJOR: Management

ACCUMULATIVE AVERAGE: C

ORGANIZATIONS: Young Democratic Club

INTERESTS: sports

Charles plans on a B.S. from C.W. Post College and a future M.B.A. degree. Although he is a recent addition to the Post Campus, he shows a great deal of promise as a future leader.



JON LOVELESS

NAME: Jon Loveless

PLACE OF RESIDENCE: Sea Cliff, New York

DATE OF BIRTH: 8/1/42

MAJOR: General Business

ACCUMULATIVE AVERAGE: C

ORGANIZATIONS: Delta Upsilon Fraternity

INTERESTS: sports, photography, mechanics

Jon was the first Senior Vice President of Beta Alpha Pi and helped obtain interested members. He therefor set up a future rush and pledge program.

Jon will graduate from Post in October of 1965 and will be attending the Management Understudy Program with American Airlines in mid-August of this year. He plans on working toward his Master's Degree at C.W. Post College.



DONALD LOWE

NAME: Donald Lowe
PLACE OF RESIDENCE: Hesconset, New York
DATE OF BIRTH: 2/4/43
MAJOR: General Business
ACCUMULATIVE AVERAGE: C+
ORGANIZATIONS: Society for the Advancement of
Management, Republican Club, Canterbury Club
INTERESTS: woodworking, swimming, boats

Don, as publicity chairman, submitted articles about C.W. Post's first Professional Business Fraternity to the College Paper and to Newsday, as well as working on a public interest project for the fraternity.

Don graduated from Post this spring and plans a future M.B.A. degree.



KENNETH MALMSTROM

NAME: Kenneth Malmstrom

PLACE OF RESIDENCE: Syosset, New York

DATE OF BIRTH: 2/9/44

MAJOR: Accounting

ACCUMULATIVE AVERAGE: C

ORGANIZATIONS: _____

INTERESTS: boating, flying, accounting, cars

Ken was the first Historian of Beta Alpha Pi and did a great deal of work organizing the historical section of the petition and the historical data on Beta Alpha Pi itself. Ken has long range plans including an eventual C.P.A. rating and a Master's Degree in Education.



JERRY MARCUS

NAME: Jerry Marcus

PLACE OF RESIDENCE: Bronx, New York

DATE OF BIRTH: 12/23/44

MAJOR: General Business

ACCUMULATIVE AVERAGE: C

ORGANIZATIONS: Hillel Club

INTERESTS: travel, flying, airlines

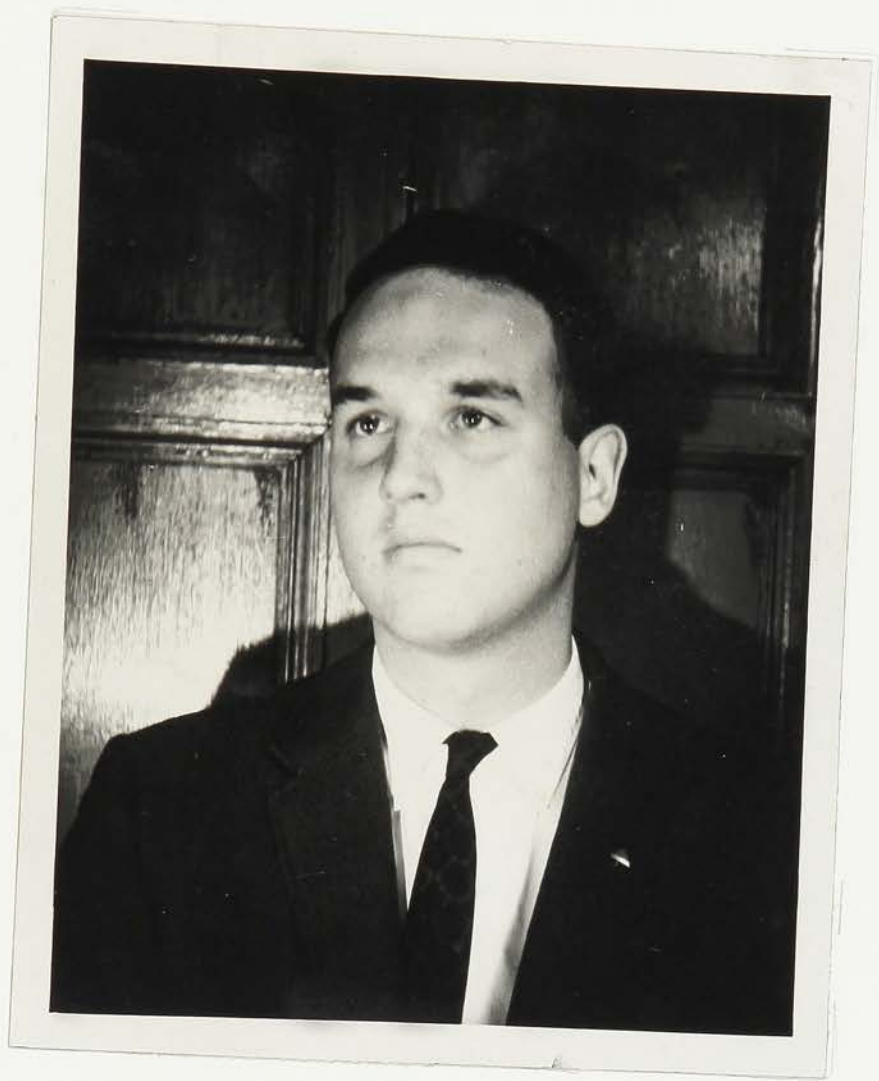
Jerry graduates from C.W. Post College in June 1967 and plans to train in airline management.



LOUIS O'DONNELL

NAME: Louis O'Donnell
PLACE OF RESIDENCE: Rockville Center, New York
DATE OF BIRTH: 6/16/42
MAJOR: General Business
ACCUMULATIVE AVERAGE: C+
ORGANIZATIONS: Society for the Advancemnt
of Management, Young Republicans Club
INTERESTS: Government, outdoor activities

Louis was the Professional Chairman for Beta Alpha Pi, and brought several good speakers to our meetings, as well as obtaining a list for future professional events. Louis graduated from C.W. Post College this spring and plans on attending Law School in the near future.



PETER ROBERTSON

NAME: Peter Robertson
PLACE OF RESIDENCE: Upper Montclair, New Jersey
DATE OF BIRTH: 1/11/45
MAJOR: Accounting
ACCUMULATIVE AVERAGE: C
ORGANIZATIONS: Society for the Advancement of
Management
INTERESTS: airplanes, boating, automobiles

Peter was very active in the scholarship committee. Due to his efforts, the members of the fraternity have successfully maintained acceptable grades.



JEFFREY M. ROSE

NAME: Jeffrey M. Rose

PLACE OF RESIDENCE: Montgomery, New York

DATE OF BIRTH: 4/30/44

MAJOR: Accounting

ACCUMULATIVE AVERAGE: C

ORGANIZATIONS: Accounting Society

INTERESTS: cars, sports, accounting

Jeff, a resident student and a member of our communications committee, is in charge of notifying Brothers in residence of impending meetings.

He intends to further his career as a C.P.A.



JEFFREY B. SCHWARTZ

NAME: Jeffrey B. Schwartz

PLACE OF RESIDENCE: Old Westbury, New York

DATE OF BIRTH: 9/1/44

MAJOR: Accounting

ACCUMULATIVE AVERAGE: B

ORGANIZATIONS: Accounting Society

INTERESTS: television repairs, Jazz, folk music

Jeff is a member of the membership committee. He helped acquire interested members, screen applicants and set up a rush program for next year.

Jeff intends to graduate as an accounting major and pursue a Master's Degree.



GENE K. SPITZER

NAME: Gene K. Spitzer

PLACE OF RESIDENCE: Elmont, New York

DATE OF BIRTH: 4/10/45

MAJOR: Accounting

ACCUMULATIVE AVERAGE: C

ORGANIZATIONS: Band, Accounting Society

INTERESTS: stamp collecting, fishing, skiing

Gene was an active member of the communications committee. He was very helpful in promptly notifying members of meetings.



RICHARD WATKINS

NAME: Richard Watkins
PLACE OF RESIDENCE: Central Islip, New York
DATE OF BIRTH: 2/22/44
MAJOR: Accounting
ACCUMULATIVE AVERAGE: C
ORGANIZATIONS: Society for the Advancement
of Management, Accounting Society
INTERESTS: music

Dick has been instrumental in acquiring rooms and equipment for the meetings of Beta Alpha Pi.

Dick will graduate from C.W. Post College with a B.S. degree in accounting.



GEOFFREY WEINER

NAME: Geoffrey Weiner
PLACE OF RESIDENCE: West Hartford, Connecticut
DATE OF BIRTH: 5/10/44
MAJOR: Personnel Management
ACCUMULATIVE AVERAGE: C
ORGANIZATIONS: _____

INTERESTS: boating, basketball

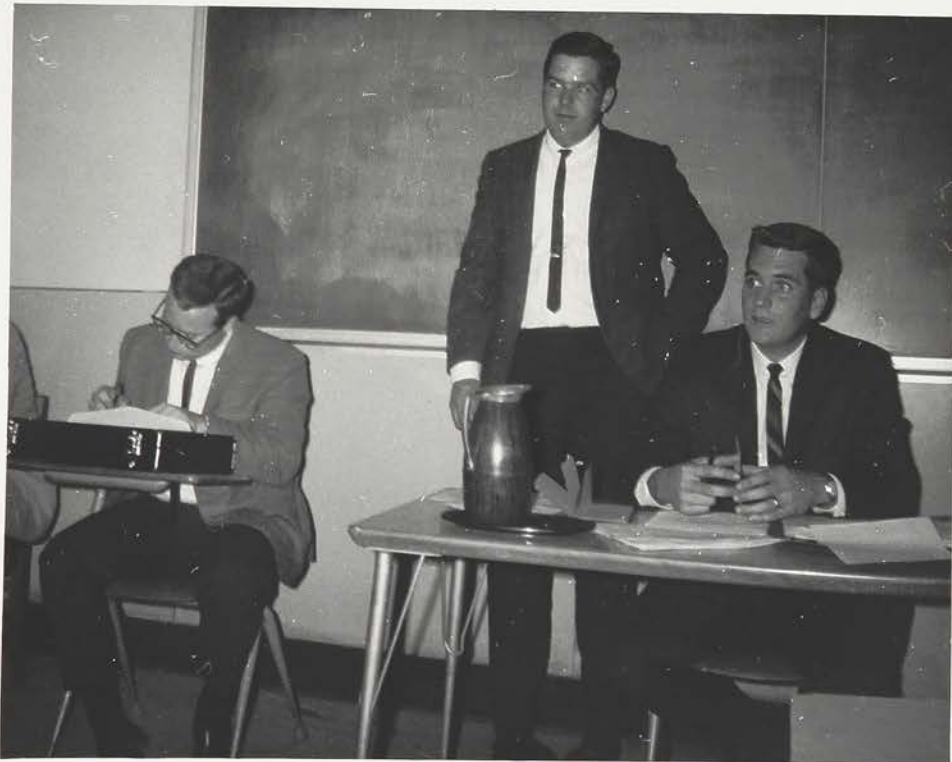
Geoffrey is on the Public Relations Committee and has helped increase campus recognition in Beta Alpha Pi. He plans on graduate study at C.W. Post College.



Founders of Beta Alpha Pi



Typical Business Meeting



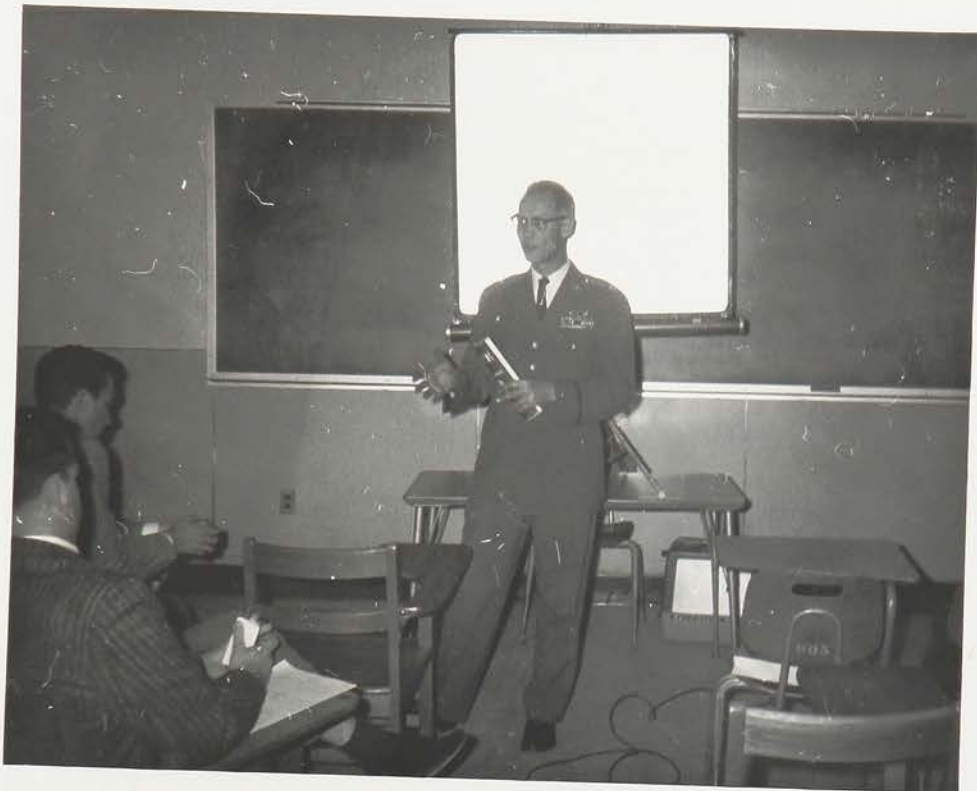
Conducting a meeting



Refreshments after meeting



Award Presentation



*Lieutenant Colonel Amos Sharets showing film on
United States Air Force*

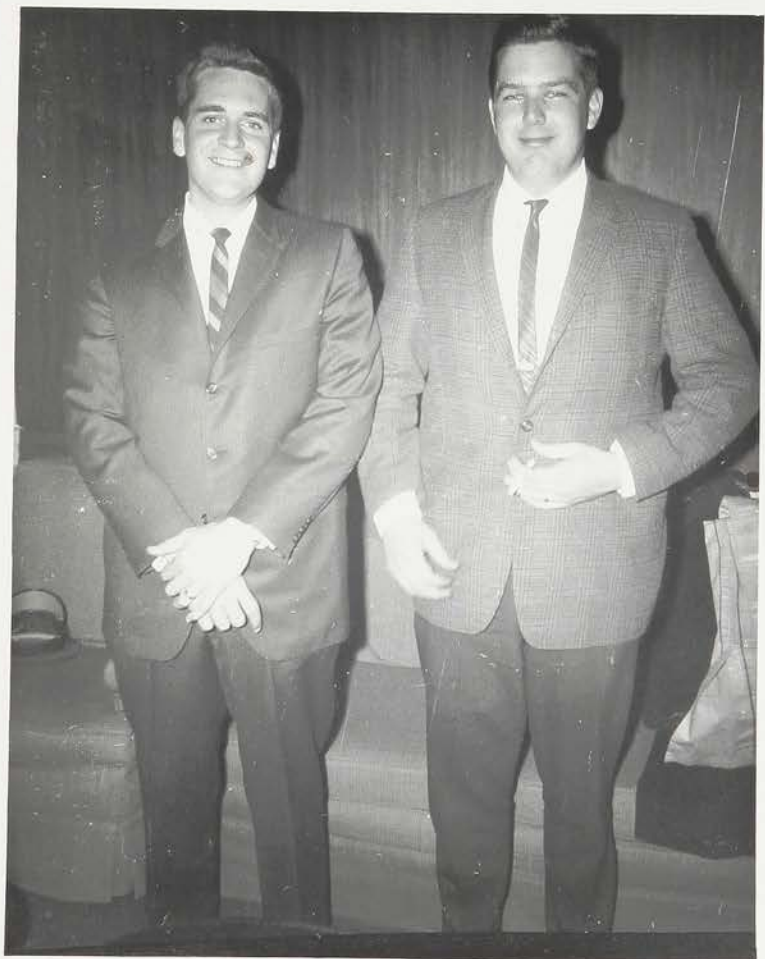


"Now where did that film go?"



*President of the Society for
The Advancement of Management
joins Beta Alpha Pi*

*Our two old married
men*





*Our First President, Craig
Hubmeier, and Lieutenant
Colonel Amos Sharets*

*"You've made a very
wise choice, young
man."*



Beta Alpha Pi's Presentation to Delta Sigma Pi



Treasurer's Report



Mr. John Marko addressing the brothers



Mr. Marko's evaluation of fraternity's progress



Mr. John Marko speaking with Professor Hallman



Beta Alpha Pi is a profit making organization



The group after pledging ceremonies: "Now we are all pinned."