

A Petition

TO

The International Fraternity

OF

DELTA SIGMA PI

By

Mu Sigma Chi Fraternity

MISSISSIPPI STATE COLLEGE

State College, Mississippi

DELTA SIGMA PI



The Central Office
222 WEST ADAMS STREET
CHICAGO ILLINOIS

for

Mr. H. G. Wright
222 W. Adams St.
Chicago 6, Ill.

MU SIGMA CHI
of
MISSISSIPPI STATE COLLEGE
RESPECTFULLY PETITION
THE INTERNATIONAL FRANCHISE OF
DELTA SIGMA PI



MU SIGMA CHI
of
MISSISSIPPI STATE COLLEGE
RESPECTFULLY PETITIONS
THE INTERNATIONAL FRATERNITY OF
DELTA SIGMA PI

MU SIGMA CHI OFFICERS

September 1948 - May 1949

Binford H. Peeples	Head Master
William D. Norman	Senior Warden
Burnett A. Giles	Junior Warden
James S. Simmons	Scribe
Michael D. McKinnons	Treasurer
Gerald T. Moore	Chancellor
Charles E. Smith	Historian
Joe H. Barber, Jr.	Reporter
Vinton B. Waite	Master of Ceremonies
Herman H. Williams	Master of Festivities

FACULTY MEMBERS

Dean Robert C. Weems, Jr., MBA

Professor Edwin C. Brown, C. P. A.

Professor Norman E. Weir, MS

TO THE GRAND COUNCIL OF THE INTERNATIONAL
FRATERNITY OF DELTA SIGMA PI

Greetings:

We, the undersigned, members of Mu Sigma Chi, do hereby petition for a charter to establish a chapter of The International Fraternity of Delta Sigma Pi on the campus of Mississippi State College, State College, Mississippi.

Organized in accordance with the high ideals of Delta Sigma Pi and being fully cognizant of the requirements, aims and purposes of this fraternity, the membership in group action in regular assembly unanimously agreed to present this petition for consideration.

In seeking this affiliation, we pledge ourselves to uphold the Constitution and By-Laws of The International Fraternity of Delta Sigma Pi and to faithfully observe the rules and regulations which the fraternity has adopted or may in the future enact.

Bingard Hardy Peoples

Charles Edwin Smith

Carl Nathan Emmons

Fred Harold Bennett

William David Norman

Charles Leighton Bates, Jr.

Bonnie Earl Westbrook

Roy Leland Thompson

Joe Henry Barber, Jr.

William Habel Runyon Jr.

Michael Duval McQuinn

Cunningham Ellis Barber

James Paul Corkren

John Joseph Hanna

James Owen Bagley

Benjamin Louis Lindsey

George Victor Fugh
Vinton Durt Waite

Burnett Allen Giles

James Samuel Simmons

Gerald Thomas Moore

James Floyd Hickman

Louis Archie Hurst, Jr.

Jack Ester Fortenberry

Clifton James Stephenson, Jr.

William Frederick Porter

Harold Franklin Smith

Edwin C. Baur
Faculty Member

John Charles Hazard

How. Kelly

Norman E. Hill
Faculty Member

Robert C. Weenig
Faculty Member

STARKVILLE

"DAIRY CAPITAL OF THE SOUTH"

Elevation: 400

Population: 6000

It was in 1830 that the first pioneers decided to settle on a knoll in the midst of the rich, rolling Prairie Belt of Mississippi. Because of the clapboard houses built by the settlers, the town was first known as Boardtown, but the name was later changed to Starkville.

Because of its geographical location in good pasture lands and its clear, healthful water, people of other communities began to move to Starkville, and it became the seat of Oktibbeha County. The town grew rapidly with the building of the Illinois Central and the Gulf, Mobile, and Ohio Railroads which provided the farmers and cattlemen with transportation facilities to the markets.

Included in the industries that have moved to Starkville in the past several years are the R. D. Sanders Industries, the Borden Dairy Products Company, Swift and Company, and several lumber and pulp-wood mills.

The people of Starkville have shown a great interest in the religious life of the community, and they have founded six churches. These include a Baptist, Methodist, Presbyterian, Episcopal, Catholic, and Church of Christ.

Opportunities for growing livestock, especially dairy cattle, were recognized, and in 1860 the first Jersey cows were imported. Good climatic conditions, a variety of grazing grasses, and the zeal and foresight of the people have gained Starkville the title of "The Dairy Capital of the South".

AIRVIEW OF MISSISSIPPI STATE CAMPUS



History of
MISSISSIPPI STATE COLLEGE

Mississippi State College was established in 1878 when the State Legislature accepted the provisions of the Morrill Land Grant Act, approved June 2, 1862, which donated to each state by the National Government public land script equal to 30,000 acres for each senator and representative in Congress.

The College (then known as Mississippi Agricultural and Mechanical College) opened its doors to students in the fall of 1880 with an enrollment of 350, all of whom were obliged to take agricultural courses --- the only ones offered at that time.

Expansion of functions started in 1887 when, in order to gather scientific information for instruction in agriculture, a system of experiment stations was inaugurated. Since then branch stations have been established in five major soil-type sections in the state to augment the research program of the central station located at the college.

The curriculum was revised in 1892, separating instruction into agriculture and mechanic arts, these later developing into the School of Agriculture and Engineering. The School of Science was decreed in 1911, followed by the School of Business in 1915. In 1935 the Board of Trustees sanctioned the recommendation to add a School of Education.

THE BUSINESS AND EDUCATION BUILDING



The Agricultural Extension Service is also a part of the College, being directly under the administration of the president. In addition, the State Chemical Laboratory, the State Plant Board, the State Seed Testing Laboratory, State Petroleum Laboratory, and the Mississippi Business Research Station are located at the College.

The grounds of the College comprise about 4,200 acres including farms, pasture and woodlands of the Experiment Station. The campus proper includes more than 700 acres. It is rolling, well-drained and covered with shade trees. The appraised valuation of the grounds, plant and equipment is approximately \$9,500,000.

Mississippi State College is maintained by State and Federal appropriations and small tuition fees paid by students.

The College is located one and a half miles from the business district of the City of Starkville.

The work at Mississippi State College is organized in divisions as follows:

Academic Division: This includes resident instruction in regular collegiate classes, graduate classes, short courses, and other forms of teaching and practical work, provided in classroom and laboratory.

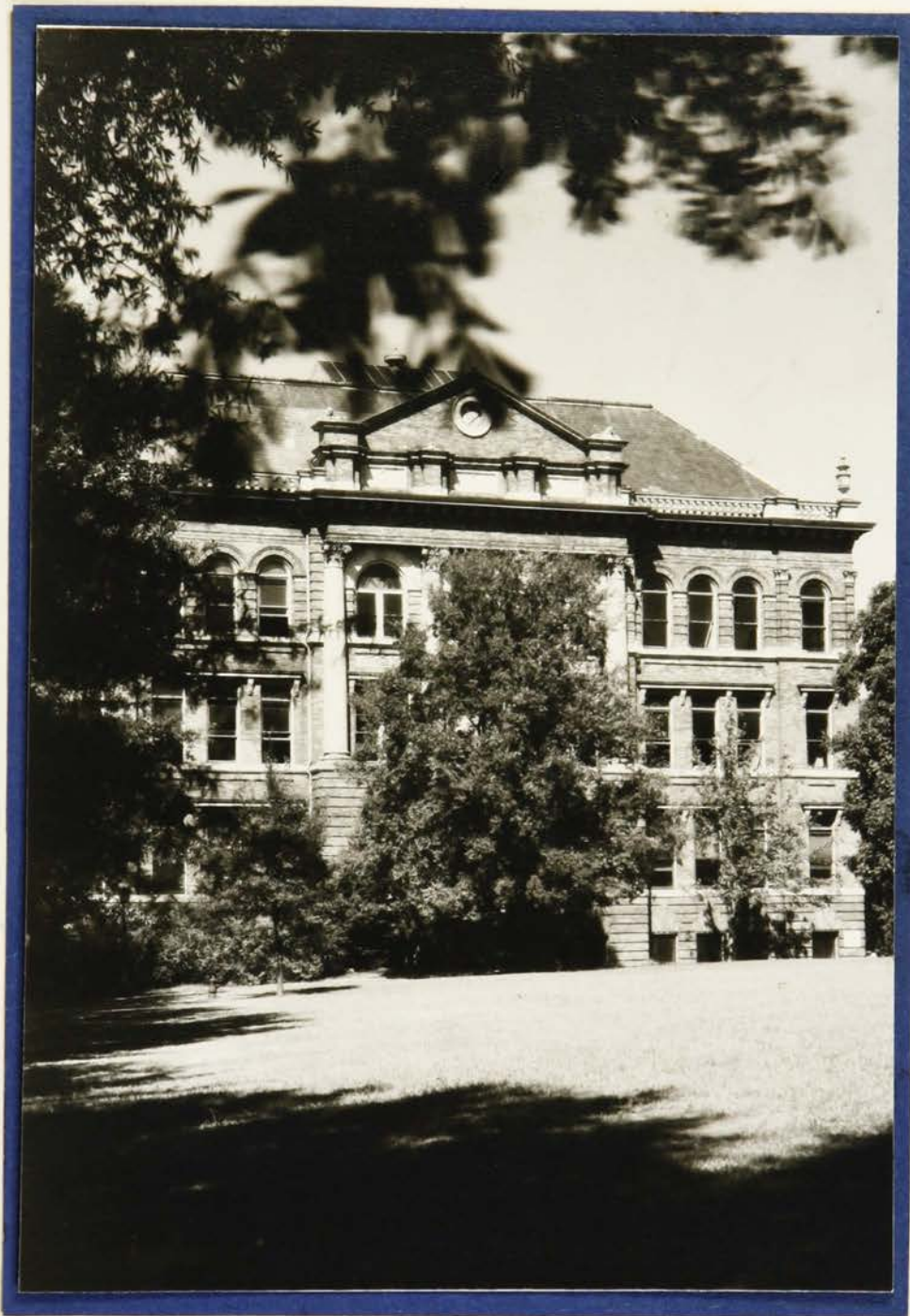
The Bachelor of Science degree is conferred by the School of Agriculture, Engineering, Science, Business and Industry, and Education. Graduate work for which a Master's degree in either of the schools may be earned is administered by the Graduate School.

The School of Agriculture comprises nine major departments as follows: General Agriculture, Agricultural Administration, Agricultural Economics, Agricultural Engineering, Agronomy, Animal Husbandry, Dairy Husbandry, Horticulture and Poultry Husbandry.

The training program in the School of Agriculture is designed to prepare students for better citizenship and for more efficient farm operation, for scientific investigation in the various specialized fields of agriculture, for professional service work, and for various fields of business in which a knowledge of scientific agriculture would be of value.

The School of Business and Industry, organized in 1915 is the oldest college school of business in the State and one of the oldest in the South. It is a professional school which combines a general education and business administration program with intensive training directly applicable to positions in the following fields: Accounting, Advertising-Journalism, Aviation Operations and Management, Banking, Construction Management, Economics, Finance, Industrial Management, Institutional Management, Insurance, Merchandising, Public Administration, Salesmanship-Advertising, Secretarial Science, and Social Service Administration.

The School of Business and Industry represents an expansion of a broad program of business administration training which the divisions of Agriculture, Engineering and Science had maintained in order to give their students advanced knowledge in business fields. One of the major functions of the School of Business and Industry is to continue its services to the other schools on the campus by offering work which is designed especially for them.



MONTGOMERY HALL
AGRICULTURAL BUILDING

The School of Education enjoys the status of full affiliation with the accrediting agencies of the State and Southern Association. It determines the courses of study and curricula which lead to the Bachelor of Science and Master of Science Degrees in Education. Its graduates meet all requirements of the State Board of Examiners for a Life Professional License. Its standards satisfy all the requirements of the Mississippi High School Accrediting Commission for teachers in the secondary fields for which it prepares teachers.

The School of Engineering comprises the Departments of Aeronautical Engineering, Civil Engineering, Drawing, Electrical Engineering, Mathematics, and Mechanical Engineering. Other departments of the College offer additional courses needed for rounding out the program of work required of engineering students. Instruction in engineering subjects is centralized in the Engineering Building and its shop annexes. These facilities afford 63,000 square feet of floor space in modern, fire-proof buildings for use as offices, classrooms, the engineering library, laboratories, drawing rooms, and shops.

The School of Science includes the Departments of Bacteriology, Botany, Chemistry and Chemical Engineering, English, Geology, and Geography, Modern Languages, Physics, and Zoology and Entomology.

It is the purpose of the College in its entire program of instruction that the work shall be thorough and of a high grade. Its teaching staff consists of well-trained men, who know not only theory but also practice. Many of them are nationally known leaders in their fields. The entrance requirements of 15 Carnegie Units are equal to those of the best

colleges and universities throughout the country. As a member of the Southern Association of Colleges, the work done at Mississippi State is accepted by the leading colleges and universities throughout the United States.

Extension Teaching Service: The Extension Teaching Service is one of the means whereby Mississippi State College, an institution financed by popular support and a part of the public education system of the State, makes its resource available not only to those privileged to reside on its campus but also to every citizen interested in learning about the myriad problems of modern life.

This service offers extramural instructional services, both credit and non-credit in nature, carried on by correspondence, at regular extension centers, and through concentrated short courses. Its activities also include maintenance of a loan library service and a forum and lecture service carried on in cooperation with the State Department of Education.

Mississippi State College students have the opportunity to engage in many fields of activity, the largest and most important organization being the Student Association which is formed of the student body. Affairs of the Student Association are guided by student-elected officers who in turn are counselled by faculty members and the president. Its chief duties are to hold meeting for the discussion of matters of interest to the students and to supervise student elections and activities.

The Young Men's Christian Association and the Young Women's Christian Association are the officially recognized religious organizations of men and women students. Since the College is a nonsectarian institution, its development

THE YMCA BUILDING

THE AGRICULTURAL ENGINEERING BUILDING



of Christian character is fostered by close cooperation of all churches in the City of Starkville, namely, Baptist, Methodist, Presbyterian, Episcopal, Church of Christ, and Catholic.

Students interested in music have the opportunity of becoming a member of the Mississippi State College Maroon Band, the Military Band, the Glee Club, or a member of one of the college dance orchestras.

Student publications include The Reflector, an eight page weekly newspaper devoted to topics of interest primarily to the students, which is edited and managed by a staff elected by the student body. The Reveille is the College annual published by a staff elected by the students and is under the direction of the Student Association. The Mis-A-Sip is the monthly humor magazine published monthly during the regular session.

National social fraternities and the year they installed chapters here are:

Alpha Tau Omega	(1937)	Sigma Alpha Epsilon	(1887-
Kappa Alpha Order	(1927)	1892, re-established	1932)
Kappa Sigma	(1936)	Sigma Alpha Mu	(1936)
Lambda Chi Alpha	(1939)	Sigma Chi	(1938)
Pi Kappa Alpha	(1927)	Sigma Phi Epsilon	(1938)
Phi Kappa Tau	(1938)	Sigma Pi	(1937)
Phi Kappa Theta	(1942)	Theta Xi	(1940)

National Sororities having chapters here are:

Chi Omega	(1936)	Zeta Tau Alpha	(1940)
-----------	--------	----------------	--------

The following national honorary fraternities are represented on the campus:

Alpha Epsilon Delta (Pre-medical)	Phi Eta Sigma (Freshman Scholastic)
Alpha Phi Omega (Servicemen)	Pi Delta Epsilon (Journalistic)
Alpha Tau Alpha (Agricultural Education)	Pi Gamma Mu (Social Science)

Alpha Zeta
(Agriculture)

Beta Beta Beta
(Agriculture)

Blue Key
(Student Activities)

Kappa Mu Epsilon
(Mathematics)

Omicron Delta Kappa
(Leadership)

Pi Kappa Delta
(Forensic)

Pi Omega Pi
(Commercial)

Scabbard and Blade
(Military)

Tau Beta Pi
(Engineering)

Local honorary societies are:

Gamma Theta Epsilon
(Chemistry)

Chi Lambda Rho
(Business)

Student activity in many field expresses itself in the following clubs:

Accounting Club
Agricultural Club
Agricultural Administration Club
Agricultural Economics Club
Agricultural Engineering Club
Agronomy Club
Baptist Student Union
Block and Bridle Club
(Animal Husbandry)
Cadet Officers Club
Camera Club
Canterbury Club
Chemical Engineering Club
Colonel Club (Host)
Commerce Club
Dairy Club
Dip and Strike Club (Geology)
Debate Club
Debate Council
Debate Team
Ex-Marine Club
Forestry Club
Future Farmers of America
4-H Club
Horticultural Club
Institute of Aero Sciences
Institute of Radio Engineers
Interfraternity Council
International Relations Club

American Institute of Engineers
American Legion, Post No. 130
American Society of Civil
Engineers
American Society of Mechanical
Engineers
Junior Hotel Men of America
Mississippi State Chemical
Association
"M" Club (Athletics)
Newman Club (Catholic)
Pan-Hellenic Council
Poultry Club
Reflector Staff
Reveille Staff
Rod and Gun Club
Scribbler Club
Society for Advancement of
Management
State College Squadron, No.
One Wing Air Force
Association
State Players
(Dramatics)
Speech Club
Student Executive Council
Wesley Foundation
Veterans of Foreign War Post

THE ATHLETIC DORMITORY



Mississippi State College is a member of the Southeastern Conference, which includes in its membership twelve of the leading colleges and universities of the South. Regulations regarding participation in athletics are subject to the action of this conference.

Like most Southern colleges, Mississippi State's most outstanding sport is football and many of its teams have attained national recognition, including a number of invitation to various bowls for New Year's Day Classics.

Other intercollegiate sports are basketball, baseball, cross country track, and tennis.

Physical Education is required of all Freshmen and Sophomores. This offers an opportunity for each student to become acquainted with new physical education activities or to become more highly skilled in those in which he has already participated.

An intra-mural athletic program which will give each student an opportunity to participate in competitive sports includes football, basketball, playground baseball, baseball, volley ball, tennis and track.

Students also have the use of the Mississippi State swimming pool, one of the finest in the nation.

Adding greatly to the color of Mississippi State's gridiron struggles and other sports, the Maroon Band and the cheerleaders are always an inspiration to the followers of State's athletic events.

Mississippi State College has always maintained a strong Department of Military Science and Tactics with officers of the regular army in charge. During the 64 years the College has operated, all of the 50,000

MACRUDER HALL



students attending who were physically fit, have been required to take at least two years of military training.

The Reserve Officers' Training Corps and the Air Force is organized as three branch units, namely, Coast Artillery and Infantry. The course of training covers four years and consists of the Basic Course and Advanced Course.

The Basic Course consist of the first two years of the four-years course in Military Science and Tactics, usually taken in the freshman and sophomore years. Regulations prohibit the curtailment of this course as a prerequisite for the Advanced Course.

The Advanced Course consists of the third and fourth years in the military department, usually the junior and senior years, with a six weeks' summer camp, which is held at the end of the junior year. Entrance to the advanced course is not open to all students completing the basic course. Only those will be selected whose past military and academic record is of such a high standing as to warrant the belief that they will become qualified reserve officers of the United States Army.

Students are required to wear the ROTC uniform at drill, however, wearing the uniform at other times is optional. The United States government furnishes the uniforms without cost to the student. Subject annually to the availability of funds and the existence of vacancies, men graduating as "honor students" under the rules prescribed by the War Department become eligible for appointment at their request, as Second Lieutenants in the Regular Army.

THE BOOK STORE AND GRILL

HULL HALL



The Stewards and Stores Department was organized in 1941 under the guidance of Louis Earl Frasheur, and since that time has made a remarkable record of accomplishment and progress. The set-up is not patterned after that of any other college or university, but is completely adapted to the peculiar needs of the College.

The varied activities of the Stewards and Stores Department include operation of the State Fountain in the new Dairy Products Building, the College Store in the "Y", the Book Store in the new annex to the Cafeteria, the Grill and the Banquet Room adjoining it, the Cafeteria and the Warehouse to supply the Cafeteria, a hog farm, and the College Abattoir.

The Department has its own bookkeeping staff and equipment, housed in the new annex built specifically for this purpose.

Some idea of the scope and variety of the activities of this department can be seen from the fact that it supplied 579,730 man days of food for soldier during the year ending February 29, 1944. The amount of food required for this accomplishment is comparable to that required for feeding the population of a city like Milwaukee for one day. This was possible in addition to feeding a considerable number of civilian students and college employees in the Grill each day.

The Stewards and Stores Department has kept step with the growth of the College, and has been able to make all necessary improvements and to serve the students regardless of number, and still be able to operate on its own resources.

MAIN DORMITORY



The Stewards and Stores Department has been able to supply the students in the Grill and Cafeteria with good food at low prices because of the many economies effected in the purchase of supplies. And not only by skillful purchasing economies, but also by savings resulting from buying the raw, unprocessed product, and having it processed economically.

For instance, at various intervals, the Department has bought hundreds of steers, feeding them locally, and in this way secures beef for the Cafeteria at a great saving. The Department maintains its own force of repair and service men.

Buildings

The academic buildings are: Lee Hall (administration), Montgomery Hall (agriculture,) Engineering Building, Hand Chemical Laboratory, Business-Education Building, Biology Building and Library, Agricultural Engineering Building, Horticultural Building, Poultry Plant, Dairy Judging Pavilion, and Abbatoir and Curing Plant.

The dormitories are the Main Dormitory, The Athletic Dormitory, Hull Hall, Magruder Hall, Carpenter Hall, Moore Hall, Briscoe Hall, and Walker Hall.

Other buildings are Student Activities Building, Experiment Station and Extension Building, Power Plant, J. Z. George Infirmary, Y.M.C.A., Cafeteria, Laundry, Athletic Field House, Utilities Building, and Petroleum Testing Laboratory.

THE BIOLOGY BUILDING

THE CAFETERIA



General Library

The General Library is on the third floor of the Biology Building, extending the length of the building. In the East end are the reading and reference room and the periodical stack room; in the center the delivery and circulation desk and the periodical reading room; in the west end the book stacks. The reading rooms have a seating capacity of 200. Students are allowed free access to the stacks where there are limited provisions for reading and study.

The library has 81,940 accessioned volumes. In department libraries on the campus are approximately 38,000 additional volumes, cards for which are in the union catalog in the General Library with the exception of those in the library of the Department of Zoology and Entomology and the State Plant Board. The library received 720 periodicals and most the publications of the United States Government.

HAND CHEMICAL LABORATORY

THE ENGINEERING BUILDING



State of the State, Secretary of the College

As laid in the Constitution of the State, and in the

and college, and to regulate the government of such

schools, Article 8, Section 1 of the Constitution

shall have the legislative power, and shall be

exercised in the following manner: The Legislature

APPENDIX

shall have the power to create, alter, amend, and

abolish any school or college, and to regulate the

same, and to appropriate money for the support of

any school or college, and to regulate the same,

and to make such laws as may be necessary to carry

into effect the purposes of this article.

Section 1. The State having accepted of the

the same as appropriated for the use of the

system of teaching, research,

Section 2. The Legislature shall have the power

to create, alter, amend, and abolish any

school or college, and to regulate the same,

and to appropriate money for the support of

any school or college, and to regulate the same,

and to make such laws as may be necessary to

Laws of the State Relating to the College

An Act to establish and organize Agricultural and Mechanical college, and to regulate the government of same.

Whereas, Section 8 Article VIII of the Constitution provides that the Legislatures shall, as soon as practicable, provide for the establishment of an Agricultural College or Colleges, and shall appropriate the two hundred and ten thousand acres of land donated to the State for the support of such a College by the Act Congress passed July 2, A. D. 1865, or the money or scrip, as the case may be, arising from the sale of said lands, or any lands which may hereafter be granted or appropriated for such purposes; and,

Whereas, the State having accepted said lands and pledged its faith to appropriate the same to the endowment of said institutions of learning; therefore,

Section 1. Be it enacted by the Legislature of the State of Mississippi, That the institution known as the Alcorn University is hereby established as, and declared to be, An Agricultural College, for the education of the colored youth of the State, and to be hereafter known as the Alcorn Agricultural and Mechanical College of the State of Mississippi.

Section 2. Be it further enacted, That an Agricultural College is hereby established for the education of the white youth of the State of Mississippi, and shall be known as the Agricultural and Mechanical College of the State of Mississippi, and shall be known as the Agricultural and Mechanical College of the State of Mississippi, and shall be located and organized as hereinafter provided.

Section 3. Be it further enacted, That the Governor and the State shall nominate and appoint, by and with the advice and consent of the Senate nine persons for each of said Colleges to be Trustees, to serve six years, one for each of said College, be chosen from each Congressional District and the remainder from the State at large; five of each Board of Trustees shall be chosen from practical agriculturists or mechanics, or elected from both, as may be deemed advisable. Immediately after they shall be assembled, in consequence of their first appointment, they shall be divided equally into three classes. The term of the first class shall expire two years from the date of their appointment, and the second class four years from the date of their appointment, and the second class four years from the date of their appointment, and the third class at the expiration of six vacancies happen by resignation or otherwise, the Governor may make temporary appointments until the next meeting

of the Legislature. The Governor shall be ex-officio a member of each said Boards of Trustees, and shall act as President thereof in all of their meetings when present, but in his absence they may choose a President Pro Tem. Five of the Trustees of each Board shall be a quorum for the transaction of business.

Section 4. Be it further enacted, That the Secretary of State shall furnish certificate to each Trustee within ten days after his appointment, notifying him that he has been appointed; and if any Trustee fail for the space of thirty days to inform the Governor of his acceptance, then his appointment shall be void, and his place filled as heretofore provided in cases of vacancy.

Section 5. Be it further enacted, That each of the Boards of Trustees herein provided for, and their successors, in office be and the same are hereby declared to be a body politic and corporate by their respective names and styles, and shall have a common seal, and each in his own name shall sue and be sued, contract and be contracted with, and may own, purchase, sell and convey property, both real, personal and mixed.

Section 6. Be it further enacted, That the Governor shall, as ex officio President, convene the Board of Trustees of either of said Colleges to consider any business connected with the same, whenever he shall deem it expedient to do so.

Section 7. Be it further enacted, That the Trustees of each College shall elect a Secretary of the Board, whose duty it shall be to record in a well bound book all the proceedings had by said Board, and shall be allowed such compensation for his services as the Board may deem proper.

Section 8. Be it further enacted. That the State Treasurer shall be ex-officio Treasurer of both Boards of Trustees, whose duty it shall be to secure and safely keep all moneys belonging to the Agricultural and Mechanical Colleges, and to disburse the same under the orders of the Boards of Trustees.

Section 9. Be it further enacted. That each of said Boards of Trustees shall possess all the power that is necessary and proper for accomplishment of the trust reposed in them, vis; to the establishment and maintenance of a first-class institution, at which the youth of the State of Mississippi may acquire a common school education, and a scientific and practical knowledge of agriculture, horticulture and the mechanic arts; also the proper growth and care of stock, without, however, excluding other scientific and classical studies, including military tactics. They may also adopt all such by-laws and regulation as they may deem necessary for that purpose, not repugnant to the Constitution and laws of the State of the United States.

Section 10. Be it further enacted, That the Board of Trustees shall appoint the President and Professors of the College,

and such other officers as they may think proper to put the College into successful operation, and shall make such laws, rules and regulations for the government of said officers as they may deem advisable . They shall regulate the course of study, rates of tuition, management of the experimental farm, the manner of performing labor and the kind of labor to be performed by the students, together with the course of discipline necessary to enforce the faithful discharge of the duties of all officers, professors and students.

Section 11. Be it further enacted, That the Trustees to be appointed as hereinbefore provided, shall receive for their services their actual expenses, incurred in attending any of the meetings of the Board of Trustees, payable out of any funds belonging to the College.

Section 12. Be it further enacted, That the said Board of Trustees shall organize under the provisions of this Act as soon as practicable after their appointment, and the Trustees of the Agricultural and Mechanical College, of the State of Mississippi shall immediately after their organization proceed to procure, by purchase or donation, a site for the location of the said Agricultural and Mechanical College, with an experimental farm thereto attached of not less than one hundred and sixty acres of land. In the selection of the said site and experimental farm, the trustees shall look to the convenience of the people of every section of the State,

the proximity of the proposed site to other public institutions supported in whole or in part by the State, with a view to giving preference to localities least favored heretofore, and also the facilities for going to and from said College, the advantages and disadvantages of the different sites proposed, and shall locate the same at the place where most advantages are offered; provided, The location shall be at a place known to be healthy; and provided, That said Trustees shall give notice for sixty days in three newspapers published in this State that they will receive proposals and examine sites before locating said College.

Section 13. Be it further enacted, That the interest arising from the proceeds of the fund known as the agricultural land scrip fund is hereby set apart for the use and benefit of said Agricultural and Mechanical College, to be used in equal proportions for the benefit of the youth of both races and Colleges and shall be drawn from the Treasury by the Board of Trustees on vouchers audited by the Board and approved by the Governor, and filed in the Auditor's office, and up on the filing of such vouchers the Auditor of Public Accounts shall draw his warrant on the State Treasurer for the same from time to time, as funds may be needed to pay the officers and professors of said College, or for any other necessary and proper object connected with the said Agricultural and Mechanical College not inconsistent with the Act of Congress, approved July 2, 1862.

Section 14. Be it further enacted, That in order to establish financial equality in all respected between the Colleges herein provided for, a sum equal to the amount heretofore appropriated to the Alcorn University out of the principal arising from the sale of said land scrip, is hereby appropriated to the College provided for the in section two of this Act, and the Trustees thereof shall be authorized to use the same in carrying out the provisions of this Act for the benefit of said College not inconsistent with the Act or Acts of Congress donating the same.

Section 15. Be it further enacted, That this Act take effect and be in force from and after its passage.

Approved, February 28, 1878.



THE SCHOOL OF BUSINESS
AND INDUSTRY

HISTORY OF THE SCHOOL OF BUSINESS AND INDUSTRY

The School of Business and Industry had its origin in 1880, the first year of Mississippi Agricultural and Mechanical College's existence. Mississippi State College, as the name was changed to by the legislature in 1932, came into being through the enactment of the Morrill Land Grant Act by Congress in 1862 and the acceptance of this act by the State of Mississippi in 1866.

The original curricula was the same for all students. There were no differentiation of courses until the 1892-1893 session. Under the provisions of the Act, the purpose of the school was to teach such subjects as were related to agriculture and mechanical arts. There was a clause, however, which stated that any other subjects other than those related to the subjects defined in the provision would be considered secondary and maintained simply for the purpose of aiding students in the application of the fundamentals of the primary courses.

Bookkeeping, one of the first freshman requirements, was the basis of the origin of the Business School. As Mississippi State College grew, many students found that they wanted training to enable them to enter the business world. For this reason these secondary courses were deemed more important, and we find more full-year business courses offered.

With the creation of new departments in history and civics,

DEAN WEEMS AND BUSINESS SCHOOL OFFICERS



the question arose as to whether a person could specialize in one of the new fields. Permission finally came to establish one type of professional school: the School of Industrial Education. Organized in 1904, this school developed from the earlier department of Industrial Pedagogy.

As a result of the ever-increasing demand from the students for an individual school specializing in business methods, the School of Business and Industry was established in 1915 as a division of the School of Industrial Education.

According to James Vance Bowen, the first dean and literally father of the school, the word "industry" was added to indicate the relationship that the school would have with Agriculture and Engineering Schools. The training was to be practical, rather than academic, and would equip a man to occupy a place in the business world beside the agriculture and engineering graduates.

Closed in 1924 for lack of funds, it was reopened in 1931. During this period, courses in commerce which were a necessary part of the curricula of the other schools were continued. It is the oldest college school of business in the state and one of the oldest in the South. It is a professional school and as it now exists, prepares men for positions in the following fields: accounting, finance, commercial aviation, industrial management, institutional management, insurance, pre-law, merchandising, public administration, secretarial studies, and general business.

In comparing the enrollment figures in the various schools

THE ACCOUNTING LAB



of the College, we find that the School of Business and Industry leads with 892, as compared to 849 in Engineering, 778 in Agriculture, 619 in Education, and 340 in Science, with a Graduate enrollment of 93.

The Business Education Building, located on the east portion of the campus between the Chemistry and the Textile Building, was constructed in 1930. It is a brick and concrete construction. The School of Business occupies the entire first floor and approximately one-half the second floor. The Dean's Office, Department of Business Administration, the Department of Institutional and Industrial Management, the Business Research Station, and the School of Business and Industry Library and Reading Room occupy the first floor. The Department of Economics and Sociology, a division of the School of Business and Industry, are housed on the second floor. The remainder of the building is occupied by Departments of the School of Education.

The present Dean of the School of Business and Industry is Robert C. Weems, who received his bachelor of science degree from the School of Business and Industry in 1931, here at Mississippi State College. Dean Weems continued his study at Northwestern and received his MBA degree there in 1934. He futhered his study at Louisiana State University and at Columbia University in New York City. Dean Weems was chosen to fill the vacancy after the death of Dean James V. Bowen in 1940. In 1943 he was called to active duty with the Navy and was reinstated to the capacity of Dean in 1946.

THE STATISTICS LAB



Dean Weems holds membership in the following organizations and fraternities: American Statistical Association, Blue Key, Chi Lambda Rho, Delta Sigma Pi, Kappa Psi, Pi Kappa Alpha, and the Rotary Club of Starkville, Mississippi.

Each Department of the School of Business and Industry is under the direction of a Department Head, who assists the Dean in the guidance of that department. The Department of Accounting and Secretarial Science is headed by W. W. Littlejohn, who received his degree at Bowling Green, Kentucky in 1930, his M.A. at the University of Missouri, C. P. A. in both the states of Tennessee and Mississippi, with graduate study at Ohio State University. The Department of Finance is under the direction of M. G. Gray, who received his degree at Mississippi State College in 1937, his MBA at Northwestern in 1945. The Department of Aviation Operations and Management is headed by R. A. Klages, who received his degree from Southwest Missouri State Teachers College in 1938, his MBA from the University of Texas in 1945, with graduate study at Northwestern. The Department of Industrial and Institutional Management is under the direction of J. J. McAllister, who received his BA from the University of Minnesota in 1933, his MA from the University of Minnesota in 1935, with graduate study at Columbia University in New York City and Northwestern. The Department of Marketing is headed by C. H. Farnsworth, who received his BS from Tennessee State College in 1929, his A.B. from Union University in 1933, his M. S. from Ohio State University in 1938, with graduate study at Ohio State University. The Public Administration and Pre-Law De-

SCENE IN BUSINESS RESEARCH STATION



partments are headed by C. M. Evans, who received his B. S. from North Missouri State College in 1932, his M. S. from the University of Kentucky in 1939, with Residence on PhD at the University of Kentucky.

The School of Business and Industry, in cooperation with the School of Engineering, has established a joint five-year course of study which satisfies the full requirements for the Bachelor's Degree in Business Administration and also the full requirements for the Bachelor's Degree in Aeronautical, Civil, Electrical or Mechanical Engineering.

The School of Business and Industry through its Business Research Station established in 1939 under the direction of Dean Weems offers a special opportunity to students who wish to gain experience in statistical work. The Business Research Station also publishes a monthly bulletin, the Mississippi Business Review, which covers the business activities throughout the state, along with special reports requested by the business men of the state. The Business Research Station is under the direction of Dean Weems, with J. J. McAllister, being assistant director and editor.

The School of Business and Industry here at Mississippi State College takes pride in the fact that it is one of the five colleges of the United States that offered a complete four year course in Institutional Management. This course of study is planned to give the student a thorough, well-balanced training in the management of hotels, restaurants, and similar institutions.

The School of Business and Industry has made rapid strides of progress, and we feel that this progress has completely justified its establishment, and we point with pride to its history.

HISTORY OF MU SIGMA CHI FRATERNITY

In the spring of 1948 Mu Sigma Chi was organized on the Mississippi State College campus. The organization followed a visit to the campus by Mr. Thomson, assistant grand secretary and Treasurer of Delta Sigma Pi. The chief purpose of Mu Sigma Chi was to form a group interested in becoming members of a Professional Business fraternity. This group has been active in all of the Business School Affairs, the Chairman of this petitioning group serves on the Dean's council to discuss matters of interest to the entire Business School.

The formation of a business fraternity at this time was very appropriate because of the large number of students enrolled in the School of Business at Mississippi State College. There were approximately thirty five hundred students in the college during the 1947-1948 year, and the school of business led in the number enrolled with nearly 900 students. A great need for a fraternity of this type was felt.

During the period that Mu Sigma Chi has been organized it has been assisted vastly by Dean R.C. Weems, who is a member of Delta Sigma Pi. When Mu Sigma Chi was first organized Dean Weems was the only Delta Sig on the campus, but now we have a new member on the faculty, he is Professor Weir of the econ-

omics Department. The Dean has been a constant source of advice and information to the members of our group. Professor Edwin C. Brown of the Accounting Department also served as part of our original Business Fraternity. Mr. Brown was Chairman of the by-laws committee and with his help Mu Sigma Chi drew up and adopted the laws by which it has functioned since activation.

Many of our members are familiar with the chapters of Delta Sigma Pi at the University of Mississippi and the University of Alabama. Observation of the surrounding chapters of a large professional Business fraternity has helped us to decide that our aims of success in the business world could be greatly enhanced if we became a part of such a group.

One of the most important functions of a business fraternity in the future will be to sponsor and conduct a commerce day each spring. Mu Sigma Chi plans to help with this activity as well as other worth while causes that will benefit the School of Business.

The Original officers of Mu Sigma Chi were; Clifton Lamar Stephenson, Jr., Chairman and Hugh Ehrlich, Secretary. The charter members of Mu Sigma Chi were as follows:

Lamar Stephenson, Hugh Ehrlich, Robert Kochitzky, Jack Hazar, Bobby Hallman, Thomas Burdette, James H. Landrum, F.A. Wise, B.H. Peeples, Joe Barber, Fred Colmer, W.B. McCreight, Roger P. Moore, Raymond Gunn, W.J. Gamble, James Peay, Tom McGaha, M.C. Hunter, Gerald Moore, Frank Saino, Frank McWhorter, Roger L. Rochester, Jack Howell, W.G. Montgomery, Walton Jamison, Eugene L. Platte, Ben Lindsey, Harry N. Pearson, Douglas Cook, George Oaks, Jimmie Scott, Jack Stanford, G.V. Pugh, G.H. Towery, Joe Whiteside, John Craft, Professor Edwin C. Brown, Professor John T. Watkins,

Our new members that have been accepted this semester are: William G. Runyon Jr. , Fred Swindoll, V.B. Waite, E.L. Jolly, Cecil R. Hill, Burnett A. Giles, Michael McKinnon, William J. Howse, Fred Bennett, Charles Smith, Alex S. Perry, James G. Gabley, James Corken, Ellie Barham, J.J. Brocato, James P. Corkren, Harold W. Hart, Jack D. Howell, Louis A. Hurst, Benjamin L. Lindsey, William Norman, William Porter, Harry Robinson, James S. Simmons, Charles E. Smith , Roy L. Thompson, B.E. Westbrook, Herman H. William.

On October 22 Mr. Thomson again visited our campus for a

talk with our local business fraternity. Mr. Thomson was accompanied by several officers from the Delta Sigma Pi Chapter of the University of Alabama. During this meeting plans were discussed as to the final assembly of the petition to Delta Sigma Pi. The local fraternity has decided to finish the petition as soon as possible and we have voted to assess each member five dollars to cover the cost of the pictures used in the petition and to pay the one hundred dollar charter fee.

In our last regular meeting we elected new officers. They are B.H. Peeples, President; Michael McKimmon, Treasurer; Gerald Moore, Secretary. Our latest decision is to supplement our occasional professional meeting with a regular professional meeting, speech or tour each month. By doing this we will be learning more of the outside business world and also fulfilling the requirements of Delta Sigma Pi.

Our petition is nearly finished and we plan to forward three copies to the national offices of Delta Sigma Pi as soon as possible.

PERSONAL HISTORY

HEAD MASTER

BINFORD HARDY PEEPLES

Box 39; Mississippi State College, State College, Miss.

Born on January 19, 1927 at Tomnolen, Mississippi

of German-Irish Ancestry

Height 5' 4"; Weight 124 lbs.; Black hair, Brown eyes

Was graduated from Eupora High School, Eupora, Miss.

in 1944

Parents: Mr. and Mrs. John Lee Peeples, Eupora, Miss.

Religion: Baptist

Classification: Senior

Major: Accounting and Advertising

Was discharged from the Navy in August 24, 1946 as a

Yeoman third class

Affiliated with Chi Lambda Rho, State Players, Baptist
Student Union, "Y" Club, Y.M.C.A. Council, Reville
Staff Member

SENIOR WARDEN

WILLIAM DAVID NORMAN

Box 221; Mississippi State College, State College, Miss.

Born on October 15, 1927 at Okolona, Mississippi of

Scotch-Irish Ancestry

Height 6'; Weight 175 lbs; Brown hair, Brown eyes

Was graduated from Corinth High School, Corinth, Mississippi
in 1945

Parents: Mr. and Mrs. David F. Norman, Box 432, Corinth, Miss.

Religion: Methodist

Classification: Junior

Major: Marketing (Salesmanship)

Was discharged from the Navy Feb. 4, 1947 with the
rank of HA1/c

JUNIOR WARDEN

BURNETT ALLEN GILES

Box 1192; Mississippi State College; State College, Miss.

Born on March 19, 1923, at Coolidge, Georgia, of English ancestry

Height 6' 2"; Weight 185 lbs.; Black hair, Grey eyes

Was graduated from the Greenville High School, Greenville, Fla.,
on May 23, 1941

Parents: Birdie Giles and Henry C. Giles, Greenville, Florida

Religion: Baptist

Classification: Sophomore

Major: Production Management

Was discharged from the Navy on November 15, 1947, as a fire controlman 1/c

SCRIBE

JAMES SAMUEL SIMMONS

Box 971; Mississippi State College, State College, Miss.

Born on November 29, 1930 at Utica, Mississippi of
Scotch-Irish Ancestry.

Height 5' 9"; Weight 165 lbs; Brown hair, Brown eyes.

Was graduated from Utica High School, Utica, Miss.
in 1947.

Parents: Mr. and Mrs. George W. Simmons, Box 85, Utica,
Mississippi.

Religion: Baptist

Classification; Sophomore

Major: Accounting

Affiliated with Sigma Phi Epsilon, Alpha Phi Omega
and the Colonels Club.

TREASURER

MICHAEL DUVAL MCKINNON

Box 817; Mississippi State College; State College, Miss.

Born on January 28, 1922 at McComb, Mississippi
of Scotch-Irish Ancestry

Height 5' 9"; Weight 180 Lbs; Brown hair, Blue eyes

Was graduated from McComb High School in 1939

Parents: Mr. and Mrs. Michael D. McKinnon

Religion: Episcopalian

Classification: Senior

Major: Industrial Management

Was discharged from the Coast Artillery Feb. 4, 1946

as a 1st Lieutenant

Affiliated with Lambda Chi, social fraternity, Society
for the Advancement of Management.

CHANCELLOR

GERALD THOMAS MOORE

Box 965; Mississippi State College, State College, Miss.

Born on September 13, 1927 at Crosby, Mississippi

of Irish Ancestry

Height 5' 8"; Weight 130 lbs.; Black Hair, Gray eyes

Was graduated from Crosby High School, Crosby Mississippi
in 1944

Parents: Mr. and Mrs. Robert E. Moore, Crosby Mississippi

Religion: Protestant

Classification: Junior

Major: Marketing

Was discharged from the Navy November 10, 1947 as PM3/c

Affiliated with Pi Kappa Alpha, social fraternity, Chi
Lambda Rho

HISTORIAN

CHARLES EDWIN SMITH

Box 1249; Mississippi State College, State College, Miss.

Born on August 28, 1926 at Kossuth, Mississippi of
Scotch-Irish Ancestry.

Height 5' 11"; Weight 160 lbs.; Blonde hair, Blue eyes.

Was graduated from Kossuth High School in 1944.

Parents: Mr. and Mrs. W.I. Smith

Religion: Methodist

Classification: Sophomore

Major: Marketing

Was discharged from the Army Air Corp in 1946 with the
rank of Corporal.

REPORTER

JOE HENRY BARBER, JR.

Box 977; Mississippi State College; State College, Miss.

Born June 24, 1925 at Harpersville, Mississippi

of Scotch-Irish-English Ancestry

Height 6' 4"; Weight 165 lbs; Black hair; Blue eyes

Was graduated from Harpersville High School April 12, 1943.

Parents: Mr. and Mrs. Joseph H. Barber

Religion: Baptist

Classification: Junior

Major: Accounting

Was discharged from the Army on April 22, 1946 as Sergeant.

Affiliated with Chi Lambda Rho, Accounting Club, Dramatic Club, Colonel's Club, "Y" Council, "Y" Luncheon Club, Baptist Student Union.

S

MASTER OF CEREMONIES

VINTON BURT WAITE

Box 1192; Mississippi State College; State College, Mississippi.

Born on April 3, 1920 at Memphis, Tennessee.

Of Scotch-Irish-English Ancestry.

Height: 5' 9½"; Weight: 168 lbs; Black hair, Brown eyes.

Was graduated from Memphis High School in 1937.

Parents: Mr. and Mrs. R. R. Waite, Whitehaven, Tennessee.

Religion: Protestant.

Classification: Sophomore.

Major: Accounting.

Was discharged from the U. S. Marine Corp in February 1946 as a Sergeant.

MASTER OF FESTIVITIES

HERMAN HOWELL WILLIAMS

Box 704; Mississippi State College; State College, Mississippi.

Born on September 5, 1925 at Gloster, Mississippi.

Of English Ancestry.

Height: 5' 6"; Weight: 130 lbs; Brown hair, Brown eyes.

Was graduated from Ford High School, Liberty, Miss., in 1943.

Parents: Mr. and Mrs. R. D. Williams, Gloster, Mississippi.

Religion: Baptist.

Classification: Senior.

Major: Marketing.

Was discharged from the Army Air Force on November 4, 1948 as a S/Sgt.

JAMES GWIN BAGLEY

Box 1212, Mississippi State College; State College, Miss.

Born on May 29, 1923 at Tunica, Mississippi.

of Scotch-Irish Ancestry

Height 6' 1"; Weight 180 lbs. Brown hair, Gray eyes.

Was graduated from Tunica County High School in 1942.

Parents: Mr. and Mrs. B. R. Bagley, Route#1, Tunica, Miss.

Religion: Baptist

Classification: Junior

Major: Accounting

Was discharged from the Army in January 1946 as a Corporal.

Affiliated with Sigma Phi Epsilon, Social Fraternity.

CUNNINGHAM ELLIS BARHAM

1624 College Street; Columbus, Mississippi

Born November 30, 1923 at Columbus, Mississippi

of Scotch-Irish Ancestry

Height 5' 11", Weight 145 lbs.; Brown hair; Brown eyes.

Was graduated from Lee High School, Columbus, Mississippi
in May 1942.

Parents: Mr. and Mrs. Clarence Eugene Barham Sr.

Religion: Baptist

Classification: Junior

Major: Public Administration and Sociology

Was discharged from the Navy in March 1946 as an Aviation
Machinist Mate Third Class

CHARLES LEIGHTON BATES JR.

Mississippi State College, State College, Mississippi

Born on Feb. 18, 1925 at Liberty, Mississippi of

English-Scotch Ancestry

Height 5' 8"; Weight 125 lbs.; Brown hair, Blue eyes

Was graduated from Liberty High School, Liberty Mississippi
in April 1943

Parents: Mr. and Mrs. C.L. Bates, 4631 Prytania St. New
Orleans, La.

Religion: Catholic

Classification: Sophomore

Major: Marketing

Was Discharged from the Navy August 10, 1945 with the
rank of PhM3/c

Affiliated with the New Club

FRED HAROLD BENNETT

Box 956 Mississippi State College; State College, Miss.

Born August 29, 1925 at Alcorn County, Mississippi

Height 5' 11"; Weight 140 lbs.; Brown hair; Gray eyes

Was graduated from Kossuth High School in 1944.

Parents: Mr. and Mrs. H. G. Bennett

Religion: Baptist

Classification: Junior

Major: Marketing

Was discharged from the Navy in April 1946 as Yeoman

First Class.

JOSEPH JOHN BROCATO

Box 1344; Mississippi State College; State College, Miss.

Born on November 13, 1928, at Cleveland, Mississippi of
English and Italian Ancestry

Height 5' 6"; Weight 160 lbs; Black hair, Brown eyes

Was graduated from Cleveland, Mississippi, High School in 1944

Parents: Anita D. Brocato and Anthony Brocato, Cleveland, Miss.

Religion: Catholic

Classification: Senior

Major: Marketing

Was discharged from the Navy on June 22, 1946, as a SK 2/c

JAMES PAUL CORKREN

421 Second Avenue South, Columbus, Mississippi

Born on July 16, 1927 at Dora, Alabama, of Dutch-Irish Ancestry

Height 5' 8½"; Weight 153 lbs.; Black hair, Brown eyes

Was graduated from the Stephen D. Lee High School, Columbus, Mississippi, in 1947

Parents: Virgie Ann McCaleb Corkren and Kilby Corkren,
421 Second Avenue South, Columbus, Mississippi

Religion: Christian

Classification: Junior

Major: Marketing, (Minor, Accounting)

Was discharged from the Navy on July 13, 1946, as a Yeoman third class

CARL NATHAN EMMONS

Box 1093; Mississippi State College, State College, Miss.

Born on September 24, 1923 at Corinth, Mississippi of
Scotch-Irish Ancestry.

Height 5' 9"; Weight 148 lbs; Blonde hair, Blue eyes

Was graduated from Corinth High School, Corinth, Miss.

Parents: Mr. and Mrs. Caleb Emmons, Box 115, Corinth
Mississippi.

Religion: Methodist

Classification: Sophomore

Major: Industrial Management

Was discharged from the Army October 3, 1945 with
the rank of P.F.C.

JOHN JOSEPH HANNA

Mississippi State College, State College, Mississippi

Born on December 13, 1927 at Columbus, Mississippi of
Syrian Ancestry.

Height 5' 10"; Weight 170 lbs; Black hair, Brown eyes.

Was graduated from Lee High School, Columbus, Mississippi in
May 1945.

Parents: Mr. and Mrs. Joseph Hanna, 116-3rd Street,
Columbus, Mississippi.

Religion: Protestant

Classification: Sophomore

Major: Accounting

Was discharged from the Navy Nov. 5, 1947 with the
rank of Seaman First Specialist "I"

HAROLD WESLEY HART, JR.

Box 4; Mississippi State College; State College, Mississippi

Born on April 30, 1927, at Columbia, Mississippi, of Dutch and German ancestry.

Height 5' 11"; Weight 155 lbs.; Brown hair; Brown eyes.

Was graduated from the Columbia High School in 1945

Parents: Lee Thompson Hart and Harold W. Hart, Columbia, Miss.

Religion: Baptist

Classification: Sophomore

Major: Merchandising

Was discharged from the Navy on January 18, 1946, as a F 2/c

Affiliated with Sigma Chi Fraternity.

JAMES LLOYD HICKMAN

Apt 19-C, Mississippi State College, State College, Miss.

Born December 29, 1925 at Lake Providence, Louisiana

of English Ancestry

Height 5' 10"; Weight 165 lbs.; Brown hair, Brown eyes

Was graduated from Monticello High School at Monticello,
Mississippi in April, 1944.

Parents: Mrs. Mattie E. Hickman (Father deceased)

Religion: Presbyterian

Classification: Junion.

Major: Marketing

Was discharged from the Army in February 1946. At the
time of discharge he held the rating of Staf Seargent.

JACK DONALD HOWELL

Box 1026; Mississippi State College; State College, Mississippi.

Born on April 4, 1925, at Nettleton, Mississippi of American ancestry.

Height 5' 10"; Weight 160 lbs.; Brown hair, Blue eyes.

Was graduated from the Plantersville High School in 1946.

Parents: Mr. and Mrs. A. G. Howell, Tupelo, Mississippi.

Religion: Baptist

Classification: Senior

Major: Marketing

Was discharged from the Navy on January 6, 1946 as a SM 3/c

WILLIAM JEFFERSON HOWSE, JR.

Box 796; Mississippi State College; State College, Miss.

Born on Feb. 13, 1926 at Poplarville, Mississippi
of German-Irish Ancestry

Height 5' 11"; Weight 150 lbs; Brown hair, Gray eyes

Was graduated from Pearl River High School in 1943

Parents: Mr. and Mrs. William J. Howse,

Religion: Baptist

Classification: Junior

Major: Aviation Operations and Management

Was discharged from the Army Air Force in September 1946
as a Sergeant.

Affiliated with the Air Force Association.

LOUIS ARCHIE HURST JR.

Box 1349; Mississippi State College; State College, Miss

Born on May 15, 1925 at Poplarville, Mississippi

of English-Irish Ancestry

Height 5' 8"; Weight 158 lbs; Blue eyes, Brown hair

Was graduated from Poplarville High School in 1942

Parents: Mr. and Mrs. L.A. Hurst

Religion: Baptist

Classification: Senior (graduating)

Major: Accounting

Was discharged from the Navy in April 1946 as a MO3MM1/c

Affiliated with Sigma Pi Fraternity, Accounting Club.

BENJAMIN LOUIS LINDSEY

Box 313; Mississippi State College; State College, Miss.

Born on April 2, 1918 at Woodland, Mississippi

of English Ancestry

Height 5' 11" Weight 175 lbs; Brown hair, Brown eyes

Was graduated from Las Vegas High School, Las Vegas,
Nevada in 1938

Parents: Mr. and Mrs. James A. Lindsey

Religion; Methodist

Classification: Senior

Major: Hotel Management

Was discharged from the Army in November 1945 as a P.F.C.

Affiliated with J.H.M.A.

FRANK HOYLE MCWHORTER

Mississippi State College, State College, Mississippi

Born on June 21, 1924 at Plantersville, Mississippi

of Irish- German Ancestry

Height 5' 10"; Weight 150 lbs; Brown hair, Blue eyes

Was graduated from Plantersville High School in 1942

Parents: Mr. and Mrs. John M. McWhorter, Plantersville, Miss.

Religion: Methodist

Classification: Senior

Major: Accounting

Was discharged from the Navy in June 1946 as a Yeoman Second Class.

WILLIAM FREDERICK PORTER

Veterans Housing Project, Apartment 33E, State College, Miss.

Born on June 6, 1925 at Key West, Florida of Scotch-Irish Ancestry

Height 5' 10"; Weight 145; Black hair, Brown eyes

Was graduated from Starkville High School in 1943

Parents: Mr. and Mrs. John Byron Porter (father deceased)

Religion: Baptist

Classification: Senior

Major: Marketing

Was discharged from the Navy in Feb. 21, 1946 with the rank of SM 3/c

Affiliated with Baptist Student Union

GEORGE VICTOR PUGH

Box 113, Mississippi State College, State College, Miss.

Born on August 15, 1928 at Purvis, Mississippi of

Irish Ancestry

Height 6'; Weight 160 lbs; Brown hair, Brown eyes

Was graduated from Enid High School, Enid, Mississippi

in 1945

Parents: Mr. and Mrs. Charles Roy Pugh, Magee, Miss.

Religion: Baptist

Classification: Junior

Major: Marketing

HARRY GATES ROBINSON

West Point, Mississippi.

Born on February 7, 1924 at West Point, Mississippi.

Of Anglo-Saxon Ancestry.

Height: 5'11"; Weight: 190 lbs; Brown hair, Blue eyes.

Was graduated from Siloam High School in 1942.

Parents: Mr. and Mrs. W. A. Robinson, West Point, Mississippi.

Religion: Baptist.

Classification: Senior.

Major: Accounting.

Was discharged from the Marine Corps on February 8, 1946 as a Corporal.

WILLIAM GOEBEL RUNYON JR.

Box 722; Mississippi State College, State College, Miss.

Born on September 23, 1925 at Tuscumbia, Ala. of
English Ancestry.

Height 5' 11"; Weight 165 lbs; Brown hair, Brown eyes.

Was graduated from Central High School, Jackson, Miss.
in August 1946.

Parents: Mr. and Mrs. Goebel Runyon, 1024 $\frac{1}{2}$ Grand Ave.
Jackson, Mississippi.

Religion: Methodist.

Classification: Junior

Major: Marketing

Was discharged from the Navy April 22, 1946 with
the rank of Radioman second class.

Affiliated with the "Y" Club.

CLIFTON LAMAR STEPHENSON, Jr.

Box 182, Mississippi State College, State College, Miss.

Born February 6, 1926 at Yazoo City, Mississippi
of English Ancestry.

Height 6'; Weight 185 lbs.; Brown hair; Blue eyes
was graduated from Flora High School, Flora Mississippi
in May, 1943.

Parents: Mr. and Mrs. Clifton Lamar Stephenson of
Flora, Mississippi.

Religion: Baptist

Classification: Senior

Major: Accounting

Was discharged from the Army in November 1946 as First
Lieutenant.

Affiliated with Pi Kappa Alpha, Accounting Club, Chi Lambda Rho,
American Legion, Reserve Officers Association,

ROY LELAND THOMPSON

Box 704; Mississippi State College; State College, Mississippi.

Born on February 13, 1927 at McComb, Mississippi.

Of English-Irish Ancestry.

Height: 6'; Weight: 150 lbs; Blonde hair, Hazel eyes.

Was graduated from McComb High School in 1944.

Parents: Mr. and Mrs. L. T. Thompson, 423 Missouri Ave., McComb, Miss.

Religion: Baptist.

Classification: Junior.

Major: Marketing.

Was discharged from the Navy in July, 1946 as a S 1/c.

Pledge, Phi Kappa Tau, social fraternity.

GROVER HAROLD TOWERY

Box 581; Mississippi State College; State College, Mississippi.

Born on August 25, 1924 at Plantersville, Mississippi.

Of English-Irish Ancestry.

Height: 5' 6 $\frac{1}{2}$ "; Weight: 147Lbs; Brown hair, Brown eyes.

Was graduated from Plantersville High School in 1942.

Parents: Mr. and Mrs. G. H. Towery, Plantersville, Mississippi.

Religion: Methodist.

Classification: Senior.

Major: Accounting.

Was discharged from the Army in January 1946 as a P.F.C.

BONNIE EARL WESTBROOK

General Delivery; Mississippi State College; State College, Mississippi.

Born on July 17, 1926 at McComb, Mississippi.

Of English Ancestry.

Height: 5' 10"; Weight: 145 lbs; Brown hair, Brown eyes.

Was graduated from McComb High School in 1944.

Parents: Mr. and Mrs. S. C. Smith, 1195 Pecan Blvd., Jackson, Miss.

Religion: Baptist.

Classification: Junior.

Major: Marketing.

Was discharged from the Army Air Force in July, 1946 as a Corporal.

Mississippi State College
State College, Mississippi

OFFICE OF THE PRESIDENT

November 17, 1948

Mr. H. G. Wright
Grand Secretary-Treasurer
The International Fraternity of Delta Sigma Pi
222 West Adams Street
Chicago, Illinois

Dear Mr. Wright:

I should like to add my support to the application of the Mu Sigma Chi for a charter from the International Fraternity of Delta Sigma Pi.

Mu Sigma Chi is made up of a group of young men with leadership ability who stand well scholastically. They exhibit a fine spirit of cooperation in all of their college activities. I feel sure that they would reflect credit upon your national fraternity.

I believe, too, that the ideals of your fraternity are in accord with the ideals of Mississippi State College, and it is a pleasure for me to recommend to you that a charter be granted this petitioning group from Mississippi State College.

Sincerely yours,


Fred T. Mitchell
President

FTM:esb

MISSISSIPPI STATE COLLEGE

STATE COLLEGE, MISSISSIPPI

November 18, 1948

DEAN PERSONNEL OFFICE
I. D. SESSUMS
DEAN OF MEN

Mr. H. G. Wright, Grand Secretary - Treasurer
The International Fraternity of Delta Sigma Pi
222 West Adams Street
Chicago, Illinois

Dear Sir:

A group of our Business students, known as Mu Sigma Chi, I understand, are petitioning Delta Sigma Pi to establish a chapter at Mississippi State College.

A number of these young men are known to me and I think very highly of them. It is my belief that they are interested and will make Delta Sigma Pi a chapter worthwhile. It will be quite an addition to our fraternity group to have your fraternity represented here.

As Chairman of the Faculty Committee on Fraternities and like Organizations I extend to you a most cordial welcome to our campus.

Very truly yours,



I. D. Sessums
Dean of Men

IDS:mwb

MISSISSIPPI STATE COLLEGE

SCHOOL OF BUSINESS AND INDUSTRY

STATE COLLEGE, MISS.

OFFICE OF THE DEAN

November 16, 1948

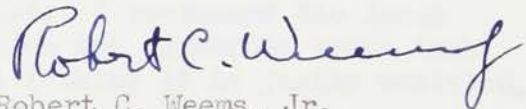
Mr. H. G. Wright
Grand Secretary-Treasurer
International Fraternity of Delta Sigma Pi
222 West Adams Street
Chicago, Illinois

Dear Sir:

Mu Sigma Chi, local professional business fraternity, is composed of a very fine select group of intelligent foresighted and public spirited students enrolled in the School of Business and Industry. They have demonstrated in many ways a spirit of professional brotherhood and a helpful and cooperative attitude toward the administration of this school.

I commend this fraternity to you without reservation, as a group that will earnestly endeavor to become an asset to your national organization if it is rewarded with an opportunity to do so. I take pride in endorsing its petition for membership in Delta Sigma Pi.

Sincerely yours,



Robert C. Weems, Jr.
Dean

RCW/lb

MISSISSIPPI STATE COLLEGE

SCHOOL OF EDUCATION
STATE COLLEGE, MISSISSIPPI

THE DIRECTOR OF SUMMER SCHOOL

OFFICE OF THE DEAN

November 17, 1948

Mr. H. G. Wright
Grand Secretary-Treasurer
The International Fraternity
of Delta Sigma Pi
222 West Adams Street
Chicago, Illinois

Dear Mr. Wright:

The School of Business and Industry at Mississippi State College is making an application for a charter with The International Fraternity of Delta Sigma Pi. The School has had a very active local chapter--Mu Sigma Chi, and is now ready, in my judgment, to receive the charter for which it has applied.

The School of Business and Industry at Mississippi State College is organized on a very sound basis and is doing very creditable work. It is the largest of the five schools on our campus in point of numbers and has gained general recognition throughout this area of the country as producing graduates of outstanding merit. The School is constantly expanding its services and is destined to be really one of the great schools of business in the South and in the nation.

It is my firm conviction that a chapter here will reflect much credit upon the students themselves, the institution, and The International Fraternity of Delta Sigma Pi. I recommend the local chapter for your very careful consideration and sincerely trust that it may be given the recognition to which I think it is justly entitled.

Very sincerely yours,



B. P. Brooks, Dean
School of Education

BPB:mwf

MISSISSIPPI STATE COLLEGE

SCHOOL OF BUSINESS AND INDUSTRY

STATE COLLEGE, MISS.

DEPARTMENT OF ACCOUNTING

November 16, 1948

Mr. H. G. Wright
Grand Secretary-Treasurer
International Fraternity of Delta Sigma Pi
222 W. Adams Street
Chicago, Illinois

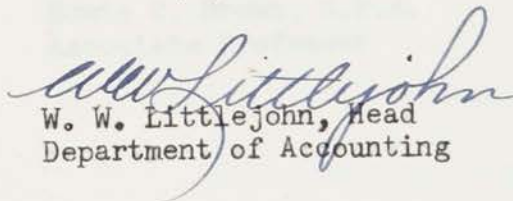
Dear Sir:

I have been closely associated with the members of the local fraternity Mu Sigma Chi which I understand is petitioning the international fraternity of Delta Sigma Pi for a charter.

The local fraternity is composed of young men with high ideals and who have been selected on the basis of their academic records together with their extra-curricular activities.

I am glad to recommend to you that this group be given a charter in the international fraternity of Delta Sigma Pi as I feel that this chapter would prove to be a valuable asset to the international organization.

Sincerely yours


W. W. Littlejohn, Head
Department of Accounting

WWL/gh

MISSISSIPPI STATE COLLEGE

SCHOOL OF BUSINESS AND INDUSTRY

STATE COLLEGE, MISS.

DEPARTMENT OF ACCOUNTING

November 16, 1948

Mr. H. G. Wright
Grand Secretary-Treasurer
International Fraternity of Delta Sigma Pi
222 W. Adams Street
Chicago, Illinois

Dear Sir:

As a member of the accounting staff of Mississippi State College, I know and have worked with most of the members of the petitioning group of Mu Sigma Chi.

It is my belief that Mu Sigma Chi will be worthy of membership in your international organization. It is a pleasure to endorse this application for membership in Delta Sigma Pi.

Sincerely yours



Edwin C. Brown, C.P.A.
Associate Professor

ECB/gh

MISSISSIPPI STATE COLLEGE

School of Business and Industry

Division of Marketing, Box 1214

STATE COLLEGE, MISSISSIPPI

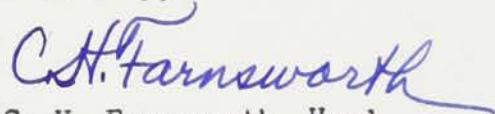
Nov. 15, 1948

Mr. J. D. Thomson Grand Secretary-Treasurer
222 West Adams Street
Chicago, Illinois

Dear Mr. Thomson:

I wish to commend to you the boys of Mu Sigma Chi of Mississippi State that are petitioning for admittance as a chapter of Delta Sigma Pi. I know many of the boys in this fraternity personally and know they are the type of young men worthy of the honor of being members of Delta Sigma Pi--excellent students of business and economics, men with good personalities, friendly, sociable, and all-around good fellows. I believe they will be assets to the fraternity and the fraternity of great value on our campus.

Sincerely,



C. H. Farnsworth, Head
Marketing Division

MISSISSIPPI STATE COLLEGE

SCHOOL OF BUSINESS AND INDUSTRY

STATE COLLEGE, MISSISSIPPI

DEPARTMENT OF
STITUTIONAL MANAGEMENT
INDUSTRIAL MANAGEMENT

November 17, 1948

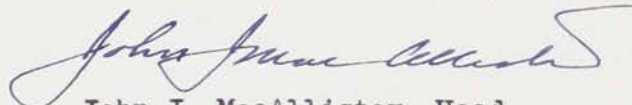
Mr. H. G. Wright
Grand Secretary and Treasurer
The International Fraternity of Delta Sigma Pi
222 Adams Street
Chicago, Illinois

Dear Mr. Wright:

I am happy to add my endorsement to the petition of the Nu Sigma Chi for a local chapter of Delta Sigma Pi. I am acquainted with the members and the objectives of Nu Sigma Chi and feel that it follows the ideals of Delta Sigma Pi.

The School of Business at Mississippi State College offers unusual opportunities to students of business. It is the fastest growing school on the campus and ranks first in enrollment at the present time. The set-up within the school is conducive to the development of a strong professional fraternity such as Delta Sigma Pi.

Very truly yours,



John J. MacAllister, Head
Dept. of Inst. and Ind. Mgt.

JJM:sp

MISSISSIPPI STATE COLLEGE

Department of Sociology
STATE COLLEGE, MISSISSIPPI

November 15, 1948

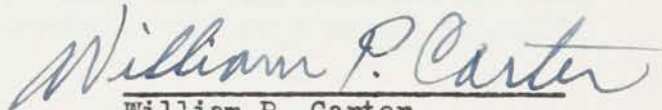
Mr. J. D. Thomson
Grand Secretary-Treasurer
International Fraternity of Delta Sigma Pi
222 W Adams Street
Chicago, Illinois

Dear Mr. Thomson:

I have been informed that a group of business students at Mississippi State College, now have a local fraternity named Mu Sigma Chi. I understand that they are applying for membership in the International Fraternity of Delta Sigma Pi.

I wish to recommend that this local group be taken into your International Fraternity. I believe that a chapter at Mississippi State College will prove to be an asset to the entire fraternity as well as to the students and faculty here.

Sincerely yours,



William P. Carter
William P. Carter
Head, Department of Sociology
Mississippi State College

MISSISSIPPI STATE COLLEGE
DEPARTMENT OF ECONOMICS
STATE COLLEGE, MISSISSIPPI

Box 282
State College, Miss.
November 13, 1948

Mr. J. D. Thomson
Grand Secretary and Treasurer
International Fraternity of Delta Sigma Pi
222 West Adams Street
Chicago, Illinois

Dear Sir:

I am informed that a select group of students on the Mississippi State Campus have organized a Mu Sigma Pi Chapter and are applying for affiliation with the National organization. I know many of these boys, have them in my classes, and talk with them frequently. I find them to be an ambitious, honorable, and worthy group.

They are fortunate in having Dean R. C. Weems, Jr. and Professor Norman E. Weir as counselors.

Therefore, I can, without reservation, recommend this group of young men to you. I am confident that any organization composed and directed by these students will be a credit to your fraternity.

Sincerely yours,



Thurston Walls, Acting Head
Department of Economics

MISSISSIPPI STATE COLLEGE
DEPARTMENT OF ECONOMICS
STATE COLLEGE, MISSISSIPPI

November 17, 1948

Mr. H. G. Wright, Grand Secretary-Treasurer
International Fraternity Delta Sigma Phi
222 West Adams Street
Chicago, Illinois

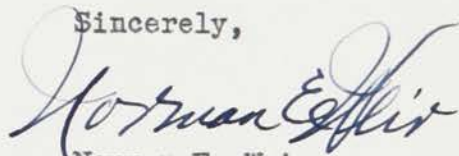
Dear Mr. Wright:

I have been advised that the Mu Sigma Chi fraternity at Mississippi State College has petitioned for a charter in the International Fraternity of Delta Sigma Phi. Although the group here has only been organized for a relative short time, they have a membership which not only includes students of high academic standing, but also outstanding leadership in student activities.

In conjunction with the rapidly expanding enrollment of the school of Business Administration at Mississippi State College, every effort is being made by the faculty and administration to raise the already high standard and quality of academic work.

As a member of Delta Sigma Phi, and thus familiar with the high standards and qualifications of this great organization, I am pleased to recommend the Mu Sigma Chi fraternity of Mississippi State College which is petitioning for a charter.

Sincerely,



Norman E. Weir
Assistant Professor

MISSISSIPPI STATE COLLEGE
SCHOOL OF BUSINESS AND INDUSTRY
STATE COLLEGE, MISSISSIPPI

DEPARTMENT OF
INSTITUTIONAL MANAGEMENT
INDUSTRIAL MANAGEMENT

November 29, 1948

Mr. H. G. Wright, Grand Secretary - Treasurer
International Fraternity of Delta Sigma Pi
222 W. Adams Street
Chicago, Illinois

Dear Mr. Wright:

It makes me happy to add my recommendation to the others in behalf of the application of the student group at Mississippi State College for recognition and membership in Delta Sigma Pi. We believe that this group will represent your organization well and that national affiliation, moreover, will stimulate and encourage these young men in their professional endeavors.

We sincerely trust that you will consider their application favorably and grant them a charter in Delta Sigma Pi.

Very truly yours,

Laura B. Saeger
Laura B. Saeger

Department of Management

MISSISSIPPI STATE COLLEGE
SCHOOL OF BUSINESS AND INDUSTRY
STATE COLLEGE, MISS.

DEPARTMENT OF BUSINESS ADMINISTRATION
DIVISION OF FINANCE

November 19, 1948

Mr. H. G. Wright
Grand Secretary-Treasurer
International Fraternity of Delta Sigma Pi
222 West Adams Street
Chicago, Illinois

Dear Mr. Wright:

I should like very much to indorse the petition of Mu Sigma Chi Fraternity of Mississippi State College for a Charter and Chapter of Delta Sigma Pi. I know most of the young men in the petitioning group personally and have had many of them in my classes as students. It is on this personal knowledge of the group that I base my indorsement for I feel that they are young men who are a credit to the School of Business and Industry here at Mississippi State College and will likewise be a credit to your Fraternity if they are granted a Charter to organize a Chapter of Delta Sigma Pi here.

I feel confident that the evidence they will present to you in their petition will convince you that the group is made up of students who are above the average in scholastic achievement as well as in extra-curricula activities.

I also feel that an International Fraternity, such as yours, will be a valuable asset to the campus and will aid in rounding out the educational program here at Mississippi State College through furnishing an additional incentive to the students and giving to them that contact with other students and institutions that they could get in no other way.

Mu Sigma Chi is a group that Delta Sigma Pi will be proud to have in their organization and I heartily indorse their petition for a charter.

Respectfully yours,

Malcolm G. Gray

Malcolm G. Gray
Asst. Professor, Business Administration
(Acting) Head- Division of Finance